



LAWRENCE RAND

3 Fawn Court, 9 Arla Place
£415,000



3 Fawn Court

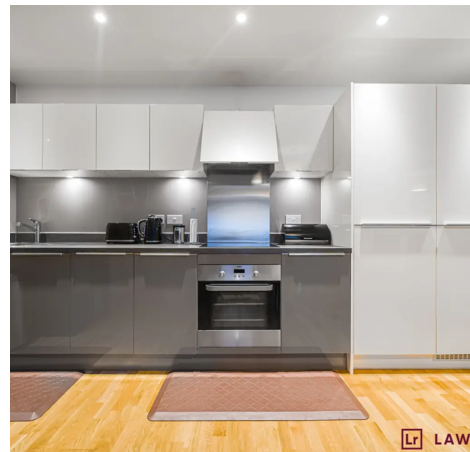
, Ruislip

An immaculate two bedroom, two-bathroom ground floor apartment in this popular modern development, just moments away from South Ruislip high street and train station. Features include long lease, modern interiors, open plan living area and allocated parking.

Council Tax band: D

Tenure: Leasehold

- 2 Bedroom Ground Floor Apartment
- Generous Open Plan Living Area
- Superb Modern Kitchen
- Master Bedroom with En-suite
- Modern Family Bathroom
- Allocated Parking
- Long Lease of 118 years
- Great Transport Links
- Close to Local Amenities



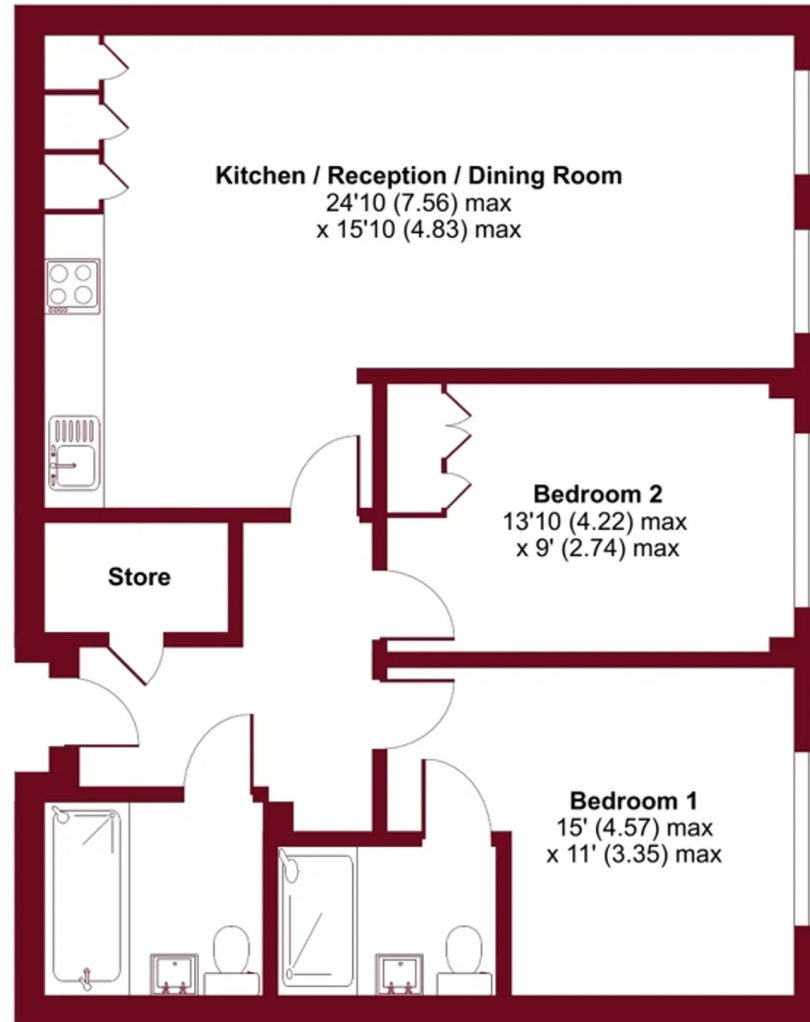




Arla Place, Ruislip, Middlesex, HA4

Approximate Area = 802 sq ft / 74.5 sq m

For identification only - Not to scale



GROUND FLOOR



Floor plan produced in accordance with RICS Property Measurement Standards incorporating International Property Measurement Standards (IPMS2 Residential). © nîchecom 2023. Produced for Lawrence Rand. REF: 965397



Lawrence Rand

Lawrence Rand, 106 Victoria Road - HA4 0AL

01895 632211

Info@lawrence-rand.co.uk

www.lawrence-rand.co.uk/



LAWRENCE RAND