



LAWRENCE RAND

714a Field End Road, Ruislip
£325,000



714a Field End Road

Ruislip, Ruislip

A spacious three bedroom split-level maisonette, circa 1,100 sq ft. Situated in a residential area, convenient for local amenities, bus routes and local schools. The property benefits from a long lease, no upper chain and an ideal buy to let investment.

Council Tax band: D

Tenure: Leasehold

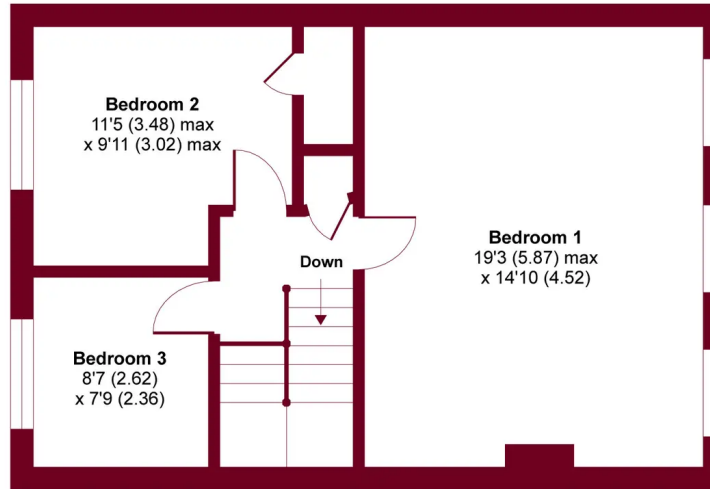
- Three bedroom flat
- Spacious rooms
- Long lease (121 years remaining)
- No onward chain
- Close proximity to transport links



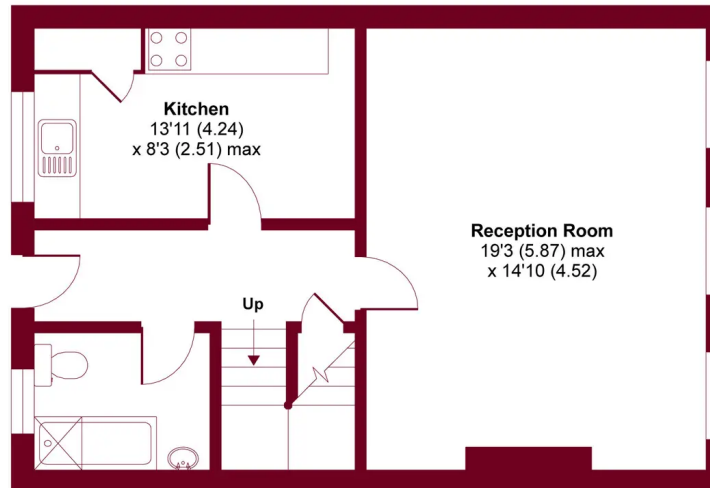


Field End Road, Ruislip, HA4

APPROX. GROSS INTERNAL FLOOR AREA 1134 SQ FT 105.3 SQ METRES



FIRST FLOOR



GROUND FLOOR

Whilst every attempt has been made to ensure the accuracy of the floor plan contained here, measurements of doors, windows and rooms are approximate and no responsibility is taken for any error, omission or misstatement. These plans are for representation purposes only as defined by RICS Code of Measuring Practice and should be used as such by any prospective purchaser. Specifically no guarantee is given on the total square footage of the property if quoted on this plan. Any figure given is for initial guidance only and should not be relied on as a basis of valuation.



Lawrence Rand

Lawrence Rand, 106 Victoria Road - HA4 0AL

01895 632211

Info@lawrence-rand.co.uk

www.lawrence-rand.co.uk/



LAWRENCE RAND