



LAWRENCE RAND

Flat 43, Research House Fraser Road, Perivale

Guide Price £300,000



Flat 43

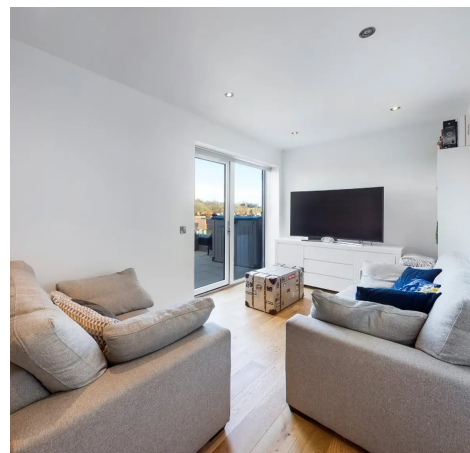
Research House Fraser Road, Greenford

This superb one bedroom apartment is situated on the top floor and benefits from a large patio-terrace. There is a modern fitted kitchen & bathroom and a long lease. The property has a secure communal entrance, parking and is within a short walk of local shops and the station. No onward chain.

Council Tax band: C

Tenure: Leasehold

- Penthouse One Bedroom Apartment
- Long Lease - 245 years
- Finished to a High Specification
- Large Private Roof Terrace
- Open plan Living / Kitchen Area
- SMEG Appliances
- Convenient to Local Amenities & Green Spaces
- Close to Multiple Transport Links







Approximate total area⁽¹⁾

507.15 ft²
47.12 m²

(1) Excluding balconies and terraces

While every attempt has been made to ensure accuracy, all measurements are approximate, not to scale. This floor plan is for illustrative purposes only.

GIRAFFE360



Lawrence Rand

Lawrence Rand, 106 Victoria Road - HA4 0AL

01895 632211

Info@lawrence-rand.co.uk

www.lawrence-rand.co.uk/



LAWRENCE RAND