



**LAWRENCE RAND**

**Flat 5, Astral House The Runway, Ruislip**  
**£385,000**





## Flat 5

Astral House The Runway, Ruislip

Ideally situated just moments away from South Ruislip station (Central Line and BR over ground) is this larger than average two bedroom ground floor apartment.

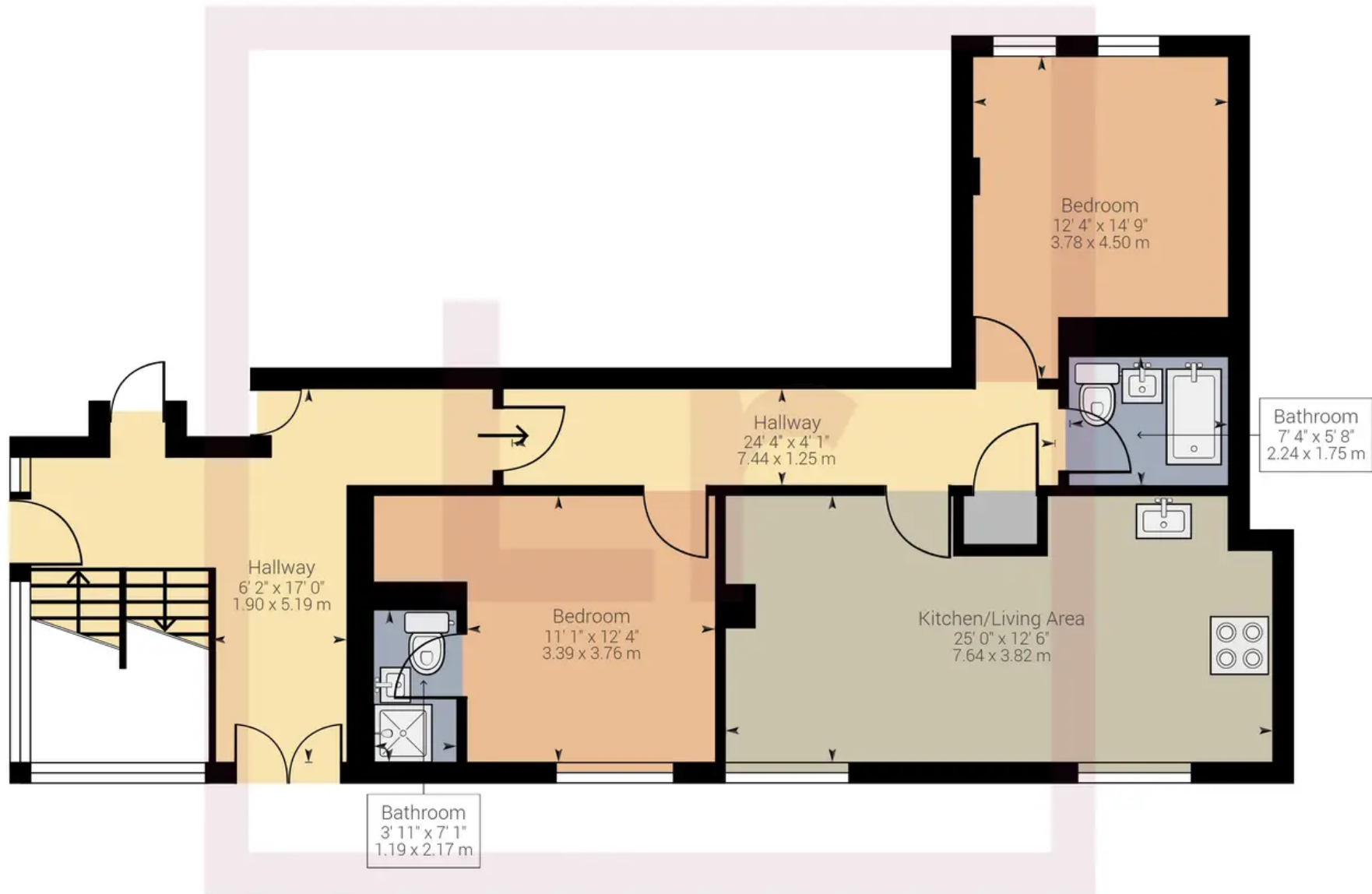
Tenure: Leasehold

- Two Double Bedrooms
- Ground Floor Flat
- Two Bathrooms
- Very Good Condition
- Leasehold
- Residents Parking









Approximate net internal area: 807.26 ft<sup>2</sup> / 75.00 m<sup>2</sup>

While every attempt has been made to ensure accuracy, all measurements are approximate, not to scale. This floor plan is for illustrative purpose only and should be used as such by any prospective tenant or purchaser.



Powered by Giraffe360





## Lawrence Rand

Lawrence Rand, 106 Victoria Road - HA4 0AL

01895 632211

[Info@lawrence-rand.co.uk](mailto:Info@lawrence-rand.co.uk)

[www.lawrence-rand.co.uk/](http://www.lawrence-rand.co.uk/)



**LAWRENCE RAND**