



LAWRENCE RAND

712a Field End Road, Ruislip
£325,000



712a Field End Road

Ruislip, Ruislip

An 1,100 sq ft split-level maisonette with three bedrooms. Situated above shops, convenient for local amenities, bus routes and schools.

Currently let out with a monthly rent of £1,450 pcm. The tenant is in place on an assured shorthold tenancy; so ideal for a buy-to-let investor.

Council Tax band: D

Tenure: Leasehold

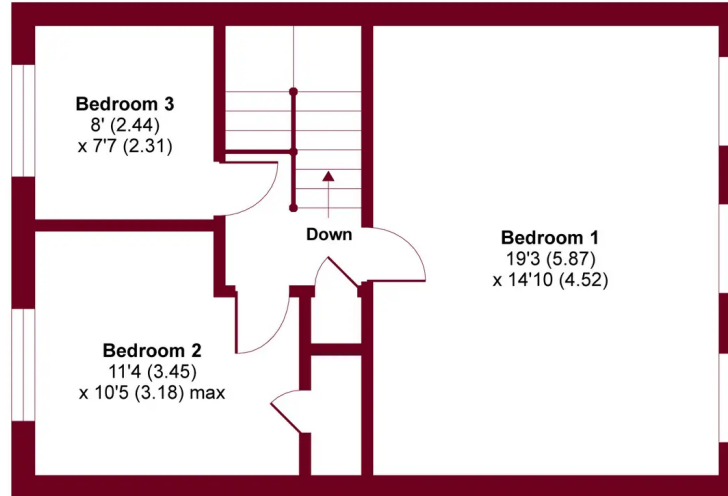
- Three bedroom flat
- Spacious rooms
- Close proximity to transport links
- Long lease (121 years remaining)
- Communal gardens



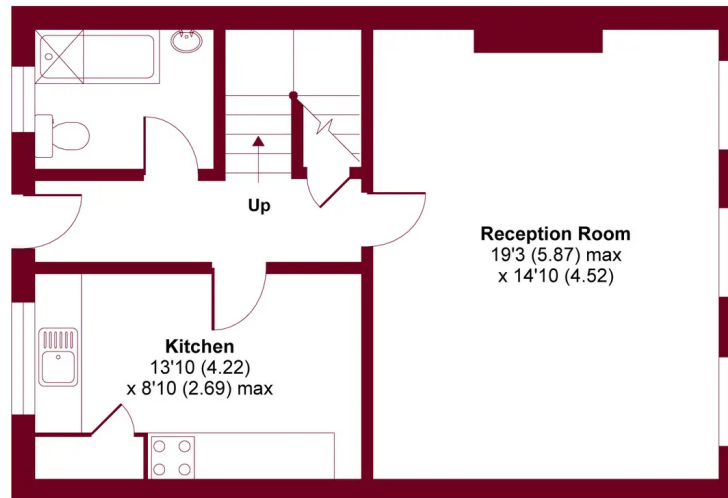


Field End Road, Ruislip, HA4

APPROX. GROSS INTERNAL FLOOR AREA 1134 SQ FT 105.3 SQ METRES



FIRST FLOOR



GROUND FLOOR

Whilst every attempt has been made to ensure the accuracy of the floor plan contained here, measurements of doors, windows and rooms are approximate and no responsibility is taken for any error, omission or misstatement. These plans are for representation purposes only as defined by RICS Code of Measuring Practice and should be used as such by any prospective purchaser. Specifically no guarantee is given on the total square footage of the property if quoted on this plan. Any figure given is for initial guidance only and should not be relied on as a basis of valuation.



Lawrence Rand

Lawrence Rand, 106 Victoria Road - HA4 0AL

01895 632211

Info@lawrence-rand.co.uk

www.lawrence-rand.co.uk/



LAWRENCE RAND