



LAWRENCE RAND

Tiptree Road, Ruislip

Guide Price **£575,000**



Tiptree Road

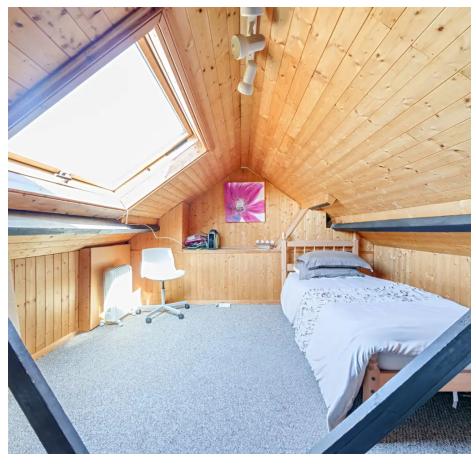
Ruislip, Ruislip

A well-presented 1930's built three bedroom terrace house situated in a popular cul-de-sac, within easy reach of shops, schools and stations. There is a lovely rear garden, spacious hallway, off street parking, double garage and a bonus loft room.

Council Tax band: D

Tenure: Freehold

- Extended terrace house
- Three bedrooms
- Bonus loft room
- Spacious Hallway
- Off street parking
- Double garage at rear
- Cul-de-sac location
- Close to shops & Stations
- Easy access to local schools







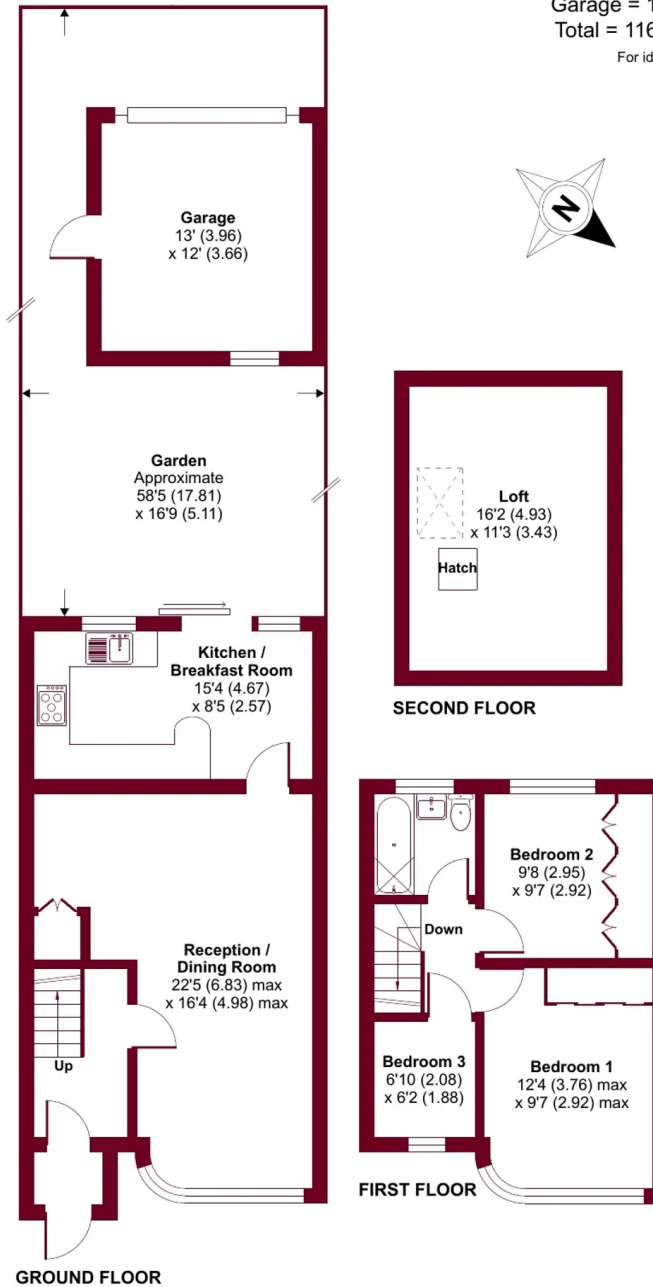
Tiptree Road, Ruislip, Middlesex, HA4

Approximate Area = 1013 sq ft / 94.1 sq m

Garage = 156 sq ft / 14.4 sq m

Total = 1169 sq ft / 108.5 sq m

For identification only - Not to scale





Lawrence Rand

Lawrence Rand, 106 Victoria Road - HA4 0AL

01895 632211

Info@lawrence-rand.co.uk

www.lawrence-rand.co.uk/



LAWRENCE RAND