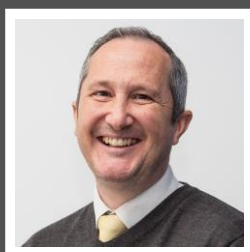


Love Homes



7 The Sidings, Toddington, Bedfordshire, LU5 6FT

This beautifully presented, modern three bedroom detached home, constructed in 2015 is situated in a peaceful private cul-de-sac, just yards from Toddington High Street and offers convenience and tranquility in equal measure. Located approximately 0.3 miles from sought-after local schools, this home is perfect for families. Its proximity to junction 12 of the M1 motorway makes it an excellent choice for commuters, ensuring convenient travel to surrounding areas. In summary, this contemporary property offers good decorative condition, a convenient location, and an array of desirable features.



This property is presented by Duncan Stead - a Love Homes property expert with over 25 years' experience.

Find out more about this property by scanning the QR code.



2.0m

Tenure: Freehold



3



2

Council Tax: E

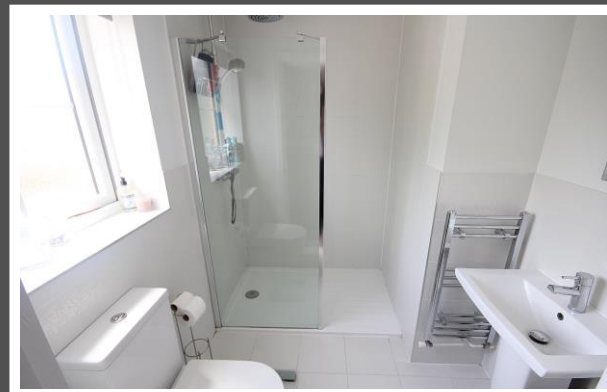


2

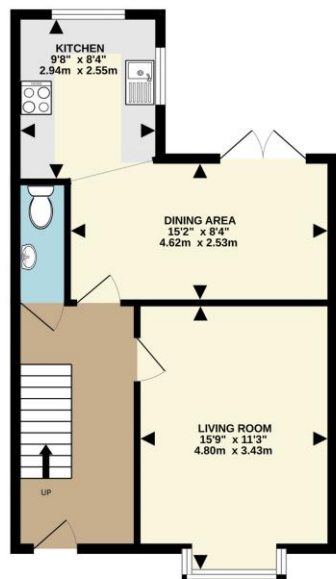




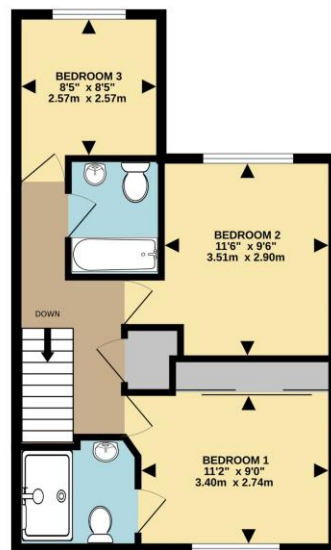
"Welcome to our home - a delightful 3 bedroom detached haven that has been in our family since it was built in 2015. Tucked away in a private cul-de-sac, the tranquility here is simply unmatched. Toddington boasts a vibrant village community that we love and why we are keen to stay in the village. One of the things we adore about our home is the warm and inviting atmosphere. It truly feels like a sanctuary. The open plan kitchen has been the heart of our home, providing a gathering place for family and friends. Living here has been a joy, thanks to the friendly neighbourhood and the peacefulness that surrounds us. We hope the next owners will experience the same sense of belonging and happiness that we have enjoyed throughout the years".



GROUND FLOOR
488 sq.ft. (45.3 sq.m.) approx.



1ST FLOOR
480 sq.ft. (44.6 sq.m.) approx.



TOTAL FLOOR AREA: 968 sq.ft. (89.9 sq.m.) approx.
Drawn by Love Homes for illustrative purposes only. Measurements and areas shown are approximate.
Made with MetreX ©2023

Score	Energy rating	Current	Potential
92+	A		
81-91	B		91 B
69-80	C	80 C	
55-68	D		
39-54	E		
21-38	F		
1-20	G		



These particulars are set out as a general outline in accordance with the Property Misdescriptions Act (1991) only for the guidance of intending purchasers or lessees, and do not constitute any part of an offer or contract. Details are given without any responsibility, and any intending purchasers, lessees or third parties should not rely on them as statements or representations of fact but must satisfy themselves by inspection or otherwise as to the correctness of each of them. We have not carried out a structural survey and the services, appliances and specific fittings have not been tested. All photographs, measurements, floor plans and distances referred to are given as a guide only and should not be relied upon for the purchase of carpets or any other fixtures or fittings. Gardens, roof terraces, balconies and communal gardens as well as tenure and lease details cannot have their accuracy guaranteed for intending purchasers. Lease details, service ground rent (where applicable) are given as a guide only and should be checked and confirmed by your solicitor prior to exchange of contracts. No person in the employment of Love Homes has any authority to make any representation or warranty whatever in relation to this property. Purchase prices, rents or other prices quoted are correct at the date of publication and, unless otherwise stated, are exclusive of VAT. We retain the copyright in all advertising material used to market this Property. All information is as advised by the seller and subject to change. Council tax bands can be subject to change by the local council.

5 The Russell Centre, Coniston Road, Flitwick, MK45 1QY
Tel: 01525 713111

Email: flitwick@lovehomes.uk

www.lovehomes.uk



Love Homes