



15 Davies Road, Exhall
Coventry

 **RDR DASSAUR** Offers Over **£350,000**



15 Davies Road

Exhall, Coventry

Presenting an impressive and spacious property situated on a prominent corner plot, this residence offers an abundance of generously proportioned living spaces, perfect for a leisurely lifestyle.

Council Tax band: D

Tenure: Freehold

- Seamless transaction with no chain involved.
- Expansive corner plot, offering ample space and privacy.
- Rear yard featuring double gate access for convenient vehicular entry.
- Generous parking capacity for up to 15 vehicles across the front and back driveways.
- Four spacious and inviting double bedrooms.
- Double garage providing secure parking and storage facilities.
- Additional separate single garage for added convenience.
- Three elegant reception rooms, perfect for entertaining or relaxing.
- Ground floor offering the convenience of a well-appointed w/c and shower room.
- Stylish and well-appointed first-floor family bathroom, completing the ensemble.

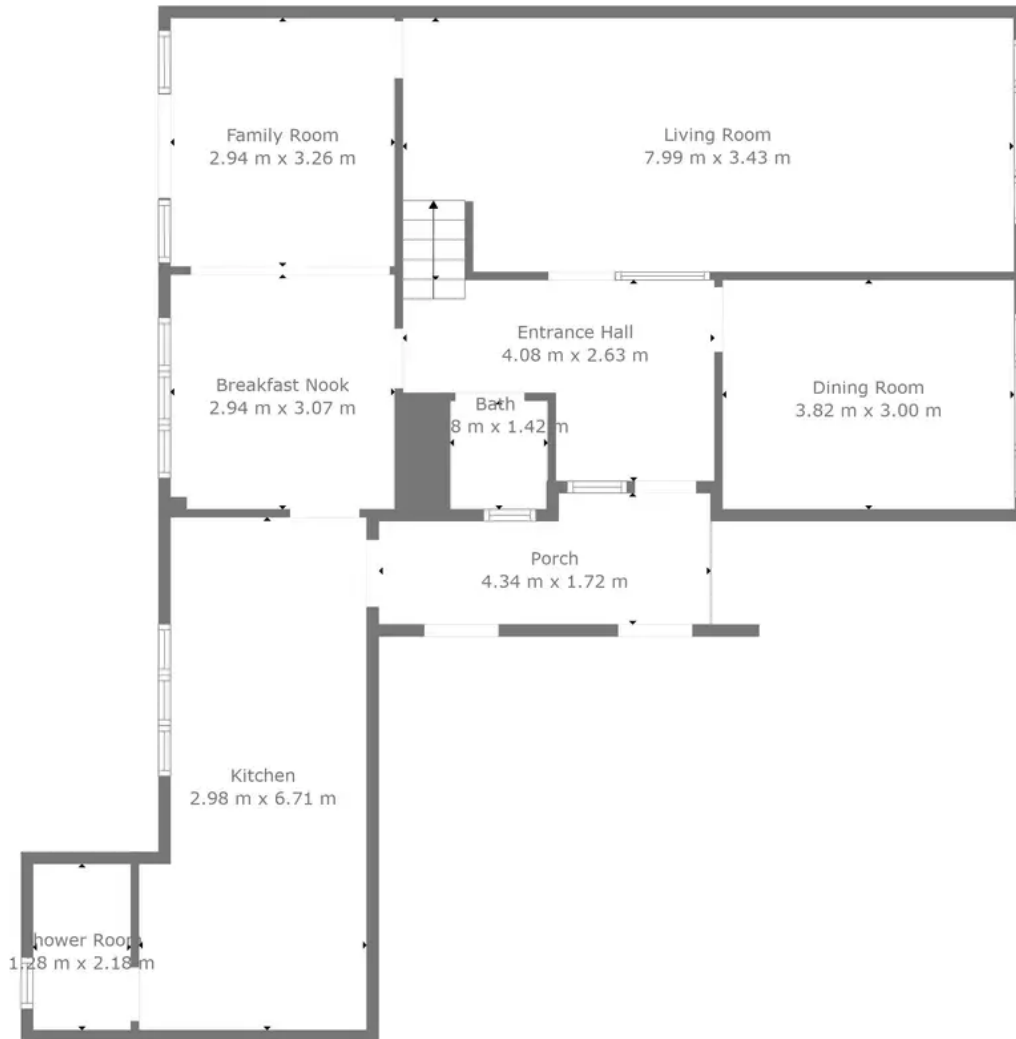


Reception

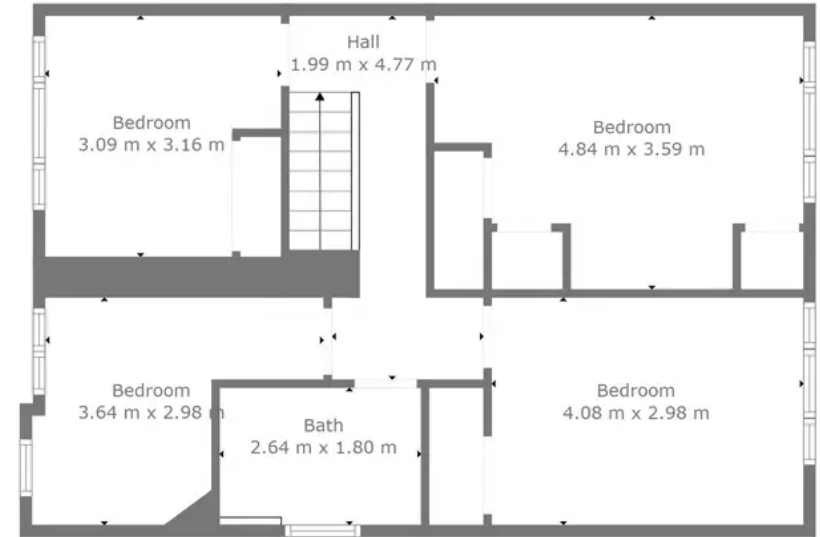
Bedroom







Floor 1



Floor 2

GROSS INTERNAL AREA
 FLOOR 1: 92 m², FLOOR 2: 66 m²
 EXCLUDED AREAS: PORCH: 7 m²
 TOTAL: 158 m²

Measurements Are Calculated By Cubicasa Technology. Deemed Highly Reliable But Not Guaranteed.



RDR Dassaur estate agents

Unit 2 Nelson Dale Wharf Street, Warwick - CV34 5LB

01926268989

Admin@RDRDassaur.co.uk

rdrdassaur.co.uk/

