

Arlington Avenue, Blackpool

Blackpool

Offers Over **£175,000**

15 Arlington Avenue

Blackpool, Blackpool

Three bedroom semi detached home situated in a popular residential location on Arlington Avenue within close proximity of many amenities, schools, shops, and transport links. The accommodation briefly comprises of entrance vestibule, entrance hallway, lounge, open-plan kitchen diner. To the first floor there are two great sized double bedrooms along with a third bedroom and a four piece family bathroom suite. Externally there is an enclosed low maintenance west facing rear garden along with a detached large garage with light and power connected and driveway providing off road parking. Council Tax band: C

Tenure: Freehold

- Popular Residential Location
- Open-Plan Kitchen Diner
- Close To Many Amenities
- Off Road Parking
- Large Garage





Other

Entrance Vestibule

Hallway

Lounge

12' 8" x 12' 3" (3.87m x 3.74m)

UPVC double glazed walk in bay window to the front elevation, gas fire with fireplace, radiator.

Kitchen/Diner

12' 11" x 19' 2" (3.93m x 5.83m)

Fitted with a matching range of base and wall units, oven and four ring hob, integrated fridge freezer, plumbing for washing machine, UPVC double glazed window to the rear elevation and door providing side access. Log burner with exposed brick, UPVC double glazed patio doors leading onto rear garden, radiator.

Landing

Landing leading to bedrooms and bathroom

Bedroom 1

12' 9" x 10' 8" (3.88m x 3.24m)

UPVC double glazed walk in bay window to the front elevation, built in storage, radiator.

Bedroom 2

12' 11" x 11' 10" (3.94m x 3.61m)

UPVC double glazed window to the rear elevation, radiator.

Bedroom 3

8' 12" x 7' 0" (2.74m x 2.14m)

UPVC double glazed window to the front elevation, radiator.

Bathroom

9' 7" x 6' 12" (2.91m x 2.13m)

Four piece suite comprising of corner bath, shower cubicle, pedestal hand wash basin, low flush WC, heated towel rail, UPVC double glazed opaque window.





Other

Entrance Vestibule

Hallway

Lounge

12' 8" x 12' 3" (3.87m x 3.74m)

UPVC double glazed walk in bay window to the front elevation, gas fire with fireplace, radiator.

Kitchen/Diner

12' 11" x 19' 2" (3.93m x 5.83m)

Fitted with a matching range of base and wall units, oven and four ring hob, integrated fridge freezer, plumbing for washing machine, UPVC double glazed window to the rear elevation and door providing side access. Log burner with exposed brick, UPVC double glazed patio doors leading onto rear garden, radiator.

Landing

Landing leading to bedrooms and bathroom

Bedroom 1

12' 9" x 10' 8" (3.88m x 3.24m)

UPVC double glazed walk in bay window to the front elevation, built in storage, radiator.

Bedroom 2

12' 11" x 11' 10" (3.94m x 3.61m)

UPVC double glazed window to the rear elevation, radiator.

Bedroom 3

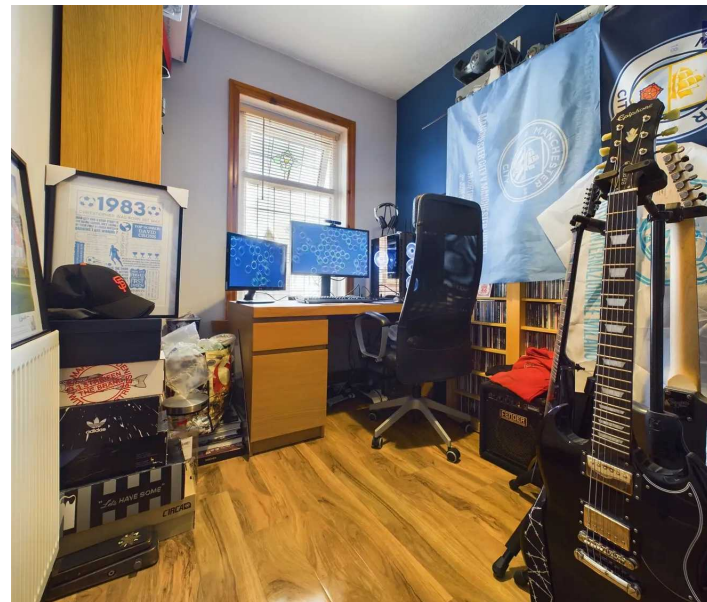
8' 12" x 7' 0" (2.74m x 2.14m)

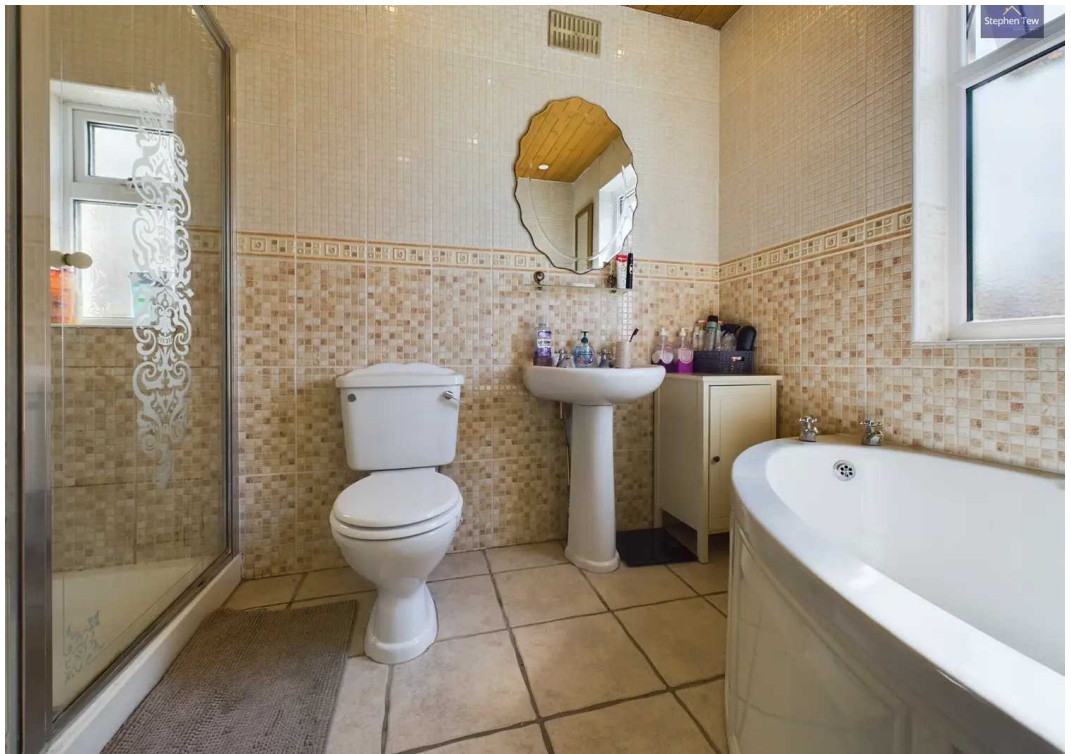
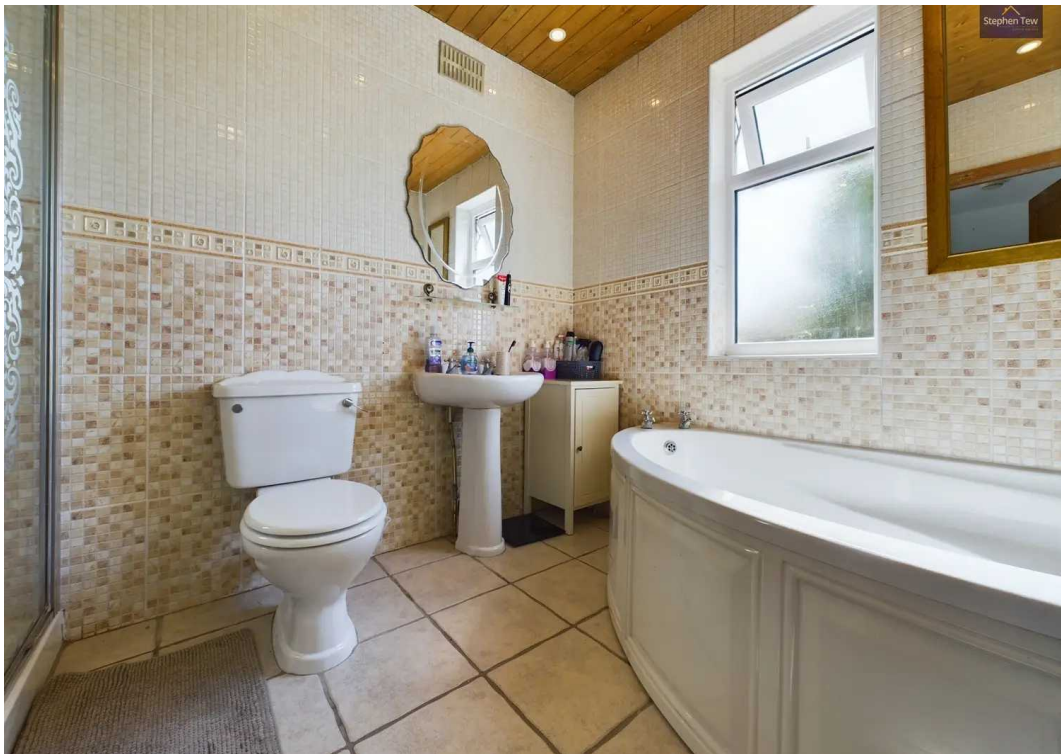
UPVC double glazed window to the front elevation, radiator.

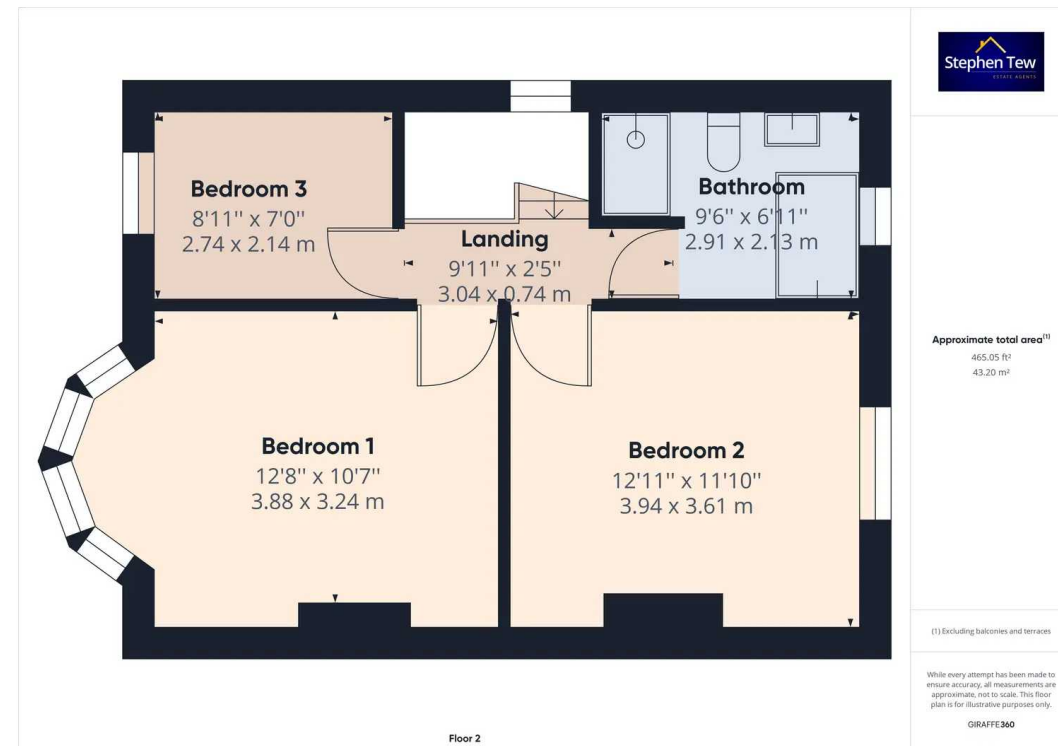
Bathroom

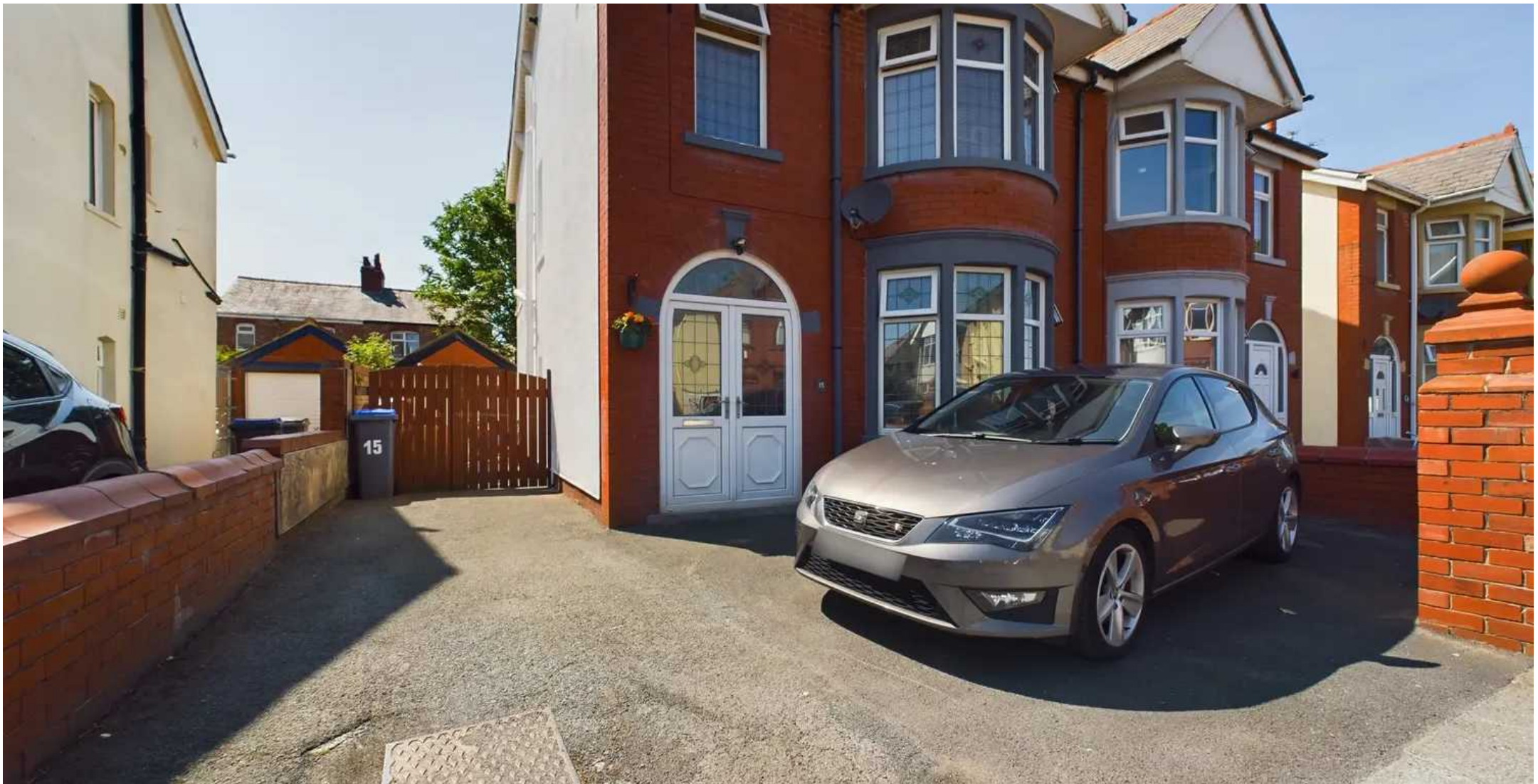
9' 7" x 6' 12" (2.91m x 2.13m)

Four piece suite comprising of corner bath, shower cubicle, pedestal hand wash basin, low flush WC, heated towel rail, UPVC double glazed opaque window.









Stephen Tew Estate Agents

Stephen Tew Estate Agents, 132 Highfield Road - FY4 2HH

01253 401111

info@stephentew.co.uk

www.stephentew.co.uk

