



HARRISON  
Sales &  
Lettings  
HARDENSON

**2 St. Peters Court, Moreton-In-Marsh**  
Moreton-In-Marsh

Guide Price **£300,000**



A beautifully well-presented terraced house situated in a cul-de-sac location close to the town centre is now available for sale.

This ideally situated house has been finished to a high standard and benefits from a rear extension.

The property comprises of porch, sitting room with log burner and understairs storage, crittall doors with tinted glass leading through to a modern re-fitted kitchen, extended garden/dining room with bifold doors opening to the garden and blue glass which is self-cleaning and regulates the heat, two double bedrooms and a family bathroom.

At the front of the house there is a single garage en-bloc with boarded loft for parking and there is space for one additional vehicle to be parked in front of the garage.

To the rear of the property is a private garden which has been designed for easy maintenance with patio and raised beds. There is power and a water tap available in the garden and a rear gate.

Benefits include new radiators throughout, double glazing, modern décor, boarded and insulated loft and no onward chain.

EPC rating - D

Council tax band - D

Tenure - Freehold



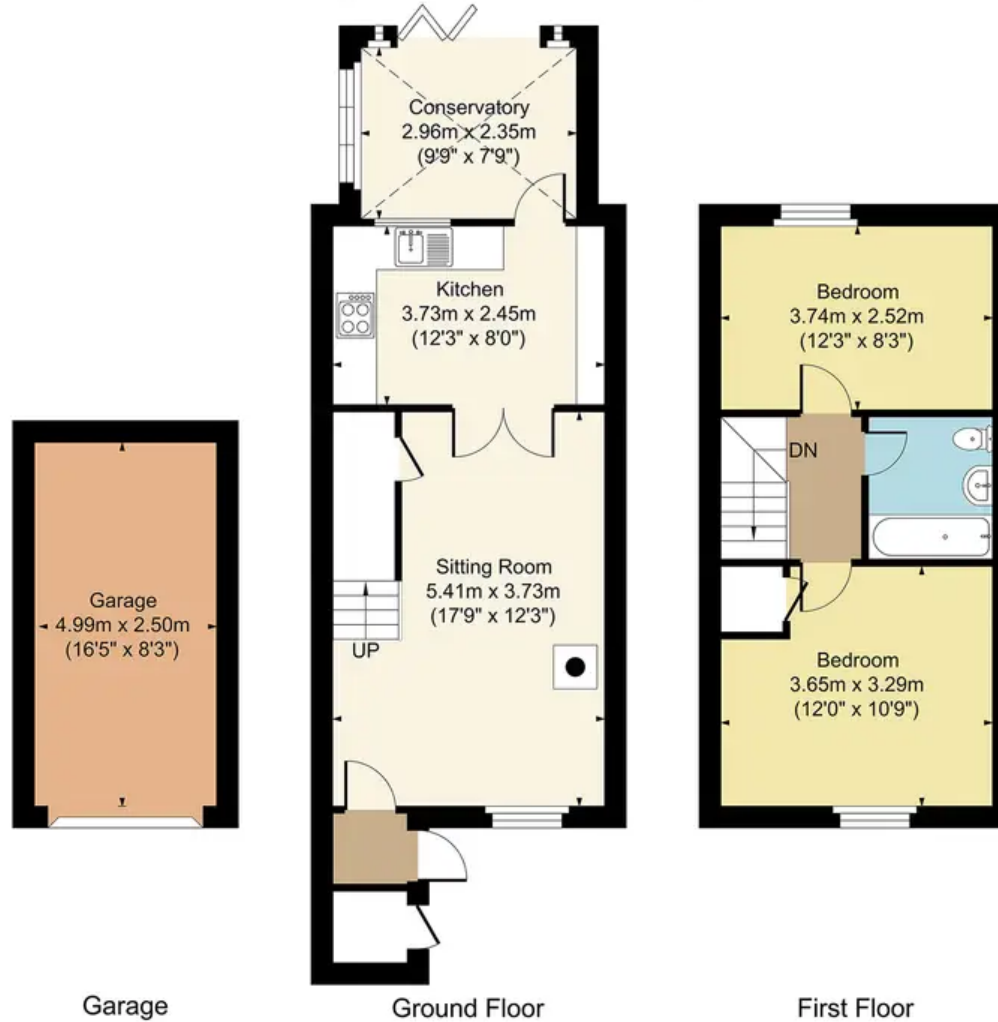


**2 St Peters Court, Moreton, GL56 0DZ**

Main House Approx. Gross Internal Area:- 68.83 sq.m. 741 sq.ft.

Garage Approx. Gross Area:- 12.47 sq.m. 134 sq.ft.

Total Approx. Gross Area:- 81.30 sq.m. 875 sq.ft.



FOR ILLUSTRATIVE PURPOSES ONLY-NOT TO SCALE

The position & size of doors, windows, appliances and other features are approximate only.

--- Denotes restricted head height

[www.dmlphotography.co.uk](http://www.dmlphotography.co.uk)

**2 St. Peters Court, Moreton-In-Marsh**

Moreton-In-Marsh

Guide Price **£300,000**