



Burnet Grove, Epsom

Epsom

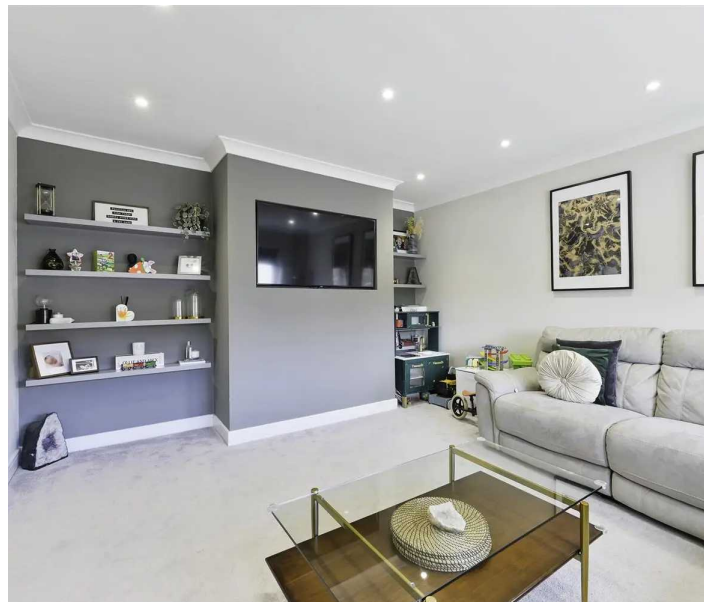
£415,000

Burnet Grove

Epsom, Epsom

- Immaculately presented
- Fully Modernised & Refurbished
- Maisonette
- Private Garden
- Two double bedrooms
- Brand New lease
- Short walk to Epsom mainline station
- Close to Epsom town centre

Kaybridge Residential are proud to present to the market this stunning two- double bedroom maisonette which benefits from a private rear garden. Ideally positioned for transport links into London and Epsom town centre with its' array of bars, cafes, shops, restaurants and supermarkets. This beautiful home has been modernised to an exact standard and comprises welcoming entrance hall, bright and spacious living/dining room, modern kitchen with ample storage space, separate bathroom toilet and two great sized bedrooms. Further benefits include a brand new extended lease. To fully appreciate this fantastic home, a viewing is highly recommended.





Burnet Grove

Epsom

Kaybridge Residential are proud to present to the market this stunning two- double bedroom maisonette which benefits from a private rear garden.

Tenure: Leasehold



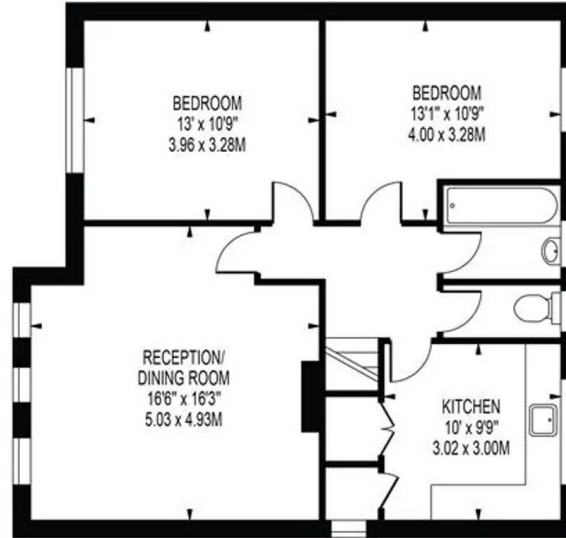


BURNET GROVE

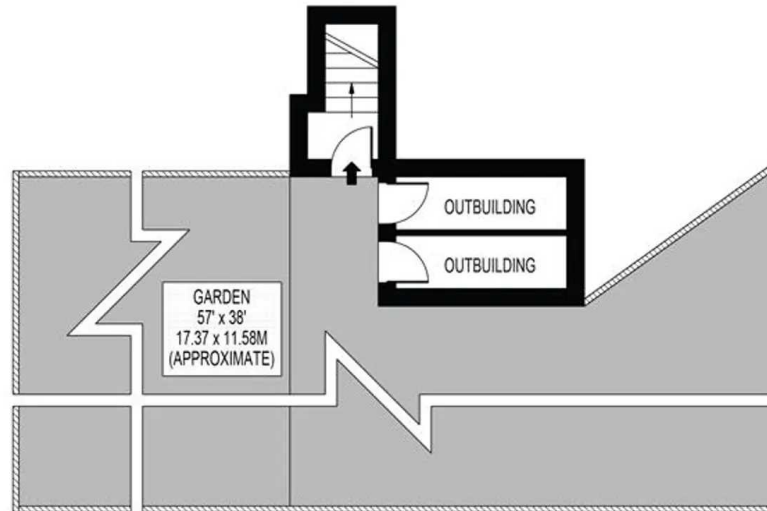
APPROXIMATE GROSS INTERNAL FLOOR AREA: 805 SQ FT - 74.79 SQ M

(EXCLUDING OUTBUILDINGS)

APPROXIMATE GROSS INTERNAL FLOOR AREA OF OUTBUILDINGS: 60 SQ FT - 5.57 SQ M



FIRST FLOOR



GROUND FLOOR

FOR ILLUSTRATION PURPOSES ONLY

THIS FLOOR PLAN SHOULD BE USED AS A GENERAL OUTLINE FOR GUIDANCE ONLY AND DOES NOT CONSTITUTE IN WHOLE OR IN PART AN OFFER OR CONTRACT. ANY INTENDING PURCHASER OR LESSEE SHOULD SATISFY THEMSELVES BY INSPECTION, SEARCHES, ENQUIRIES AND FULL SURVEY AS TO THE CORRECTNESS OF EACH STATEMENT. ANY AREAS, MEASUREMENTS OR DISTANCES QUOTED ARE APPROXIMATE AND SHOULD NOT BE USED TO VALUE A PROPERTY OR BE THE BASIS OF ANY SALE OR LET.



KAYBRIDGE
RESIDENTIAL

Kaybridge Residential Epsom

Kaybridge Residential Estate Agents, 23 Stoneleigh Broadway - KT17 2JE

02080040474 • info@kbridge.co.uk • www.kaybridgeresidential.co.uk/