



St Catherine Court, Frome

£825 per month

Council Tax Band A Tax Price £1,625 pa



Call Forest Marble 24/7 to book your viewing on this character one bedroom, First floor flat on the popular Catherine Hill in Frome, available to move in from early August and offering an open plan living space and beautiful communal court yard.

To Interact with the virtual tour [Click Here](#)

Situation

Situated in a very popular location within easy access of the local shops of Badcox, schools, walk down the famous cobbles into the main town. Frome town itself is one of Somerset's finest artisan towns which boasts a fantastic spirit of togetherness. There is a wide range of supermarkets, public houses, banks, theatres, schools, college and a sports centre as you would expect. However Frome prides itself on the great selection of independently run shops that line the historical cobbled streets, while away your days sipping coffee in one of the cafes or buying gifts from the amazing boutiques. Frome is well known for its weekly markets and its monthly artisan market on a Sunday which draws people from all around. There is a rail service that is on the Paddington Line and also feeds into the cities of Bath & Bristol. Transport links will have you quickly out to the cities of Bath, Bristol & Salisbury.

Key Features

- Close to Town Center
- Available August
- Communal Court Yard
- Great Location
- High Ceilings
- Open Plan Living



Rooms

Open Plan Living Area

13'11" x 15'7" (4.24m x 4.75m)

Bedroom

8'11" x 9'5" (2.72m x 2.87m)

Shower Room

4'11" x 5'11" (1.50m x 1.80m)

Parking

No allocated parking however there are places to park near by, also you can apply for annual permit parking.

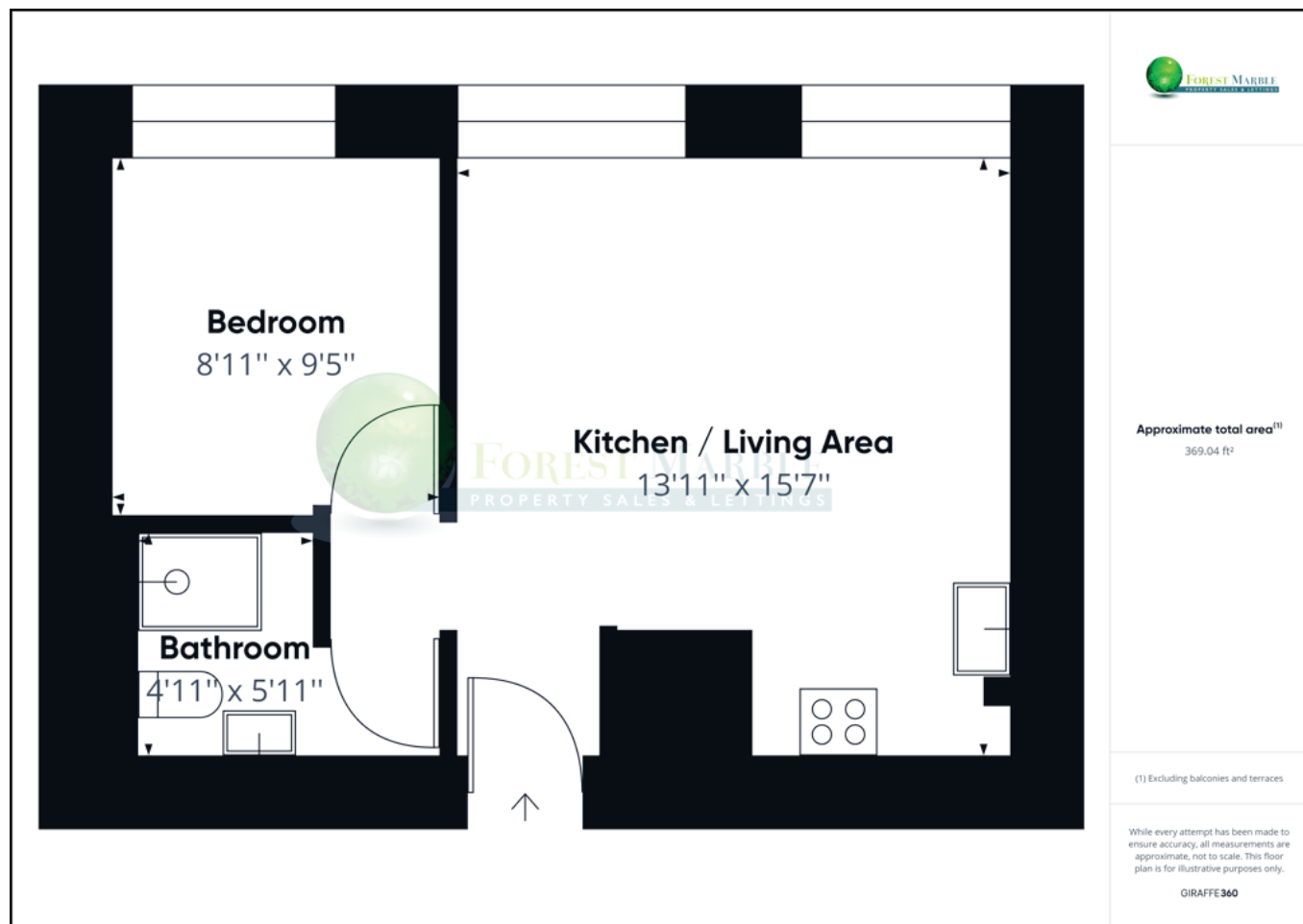
Directions

From our offices turn right up Wallbridge and bear right onto Portway. Continue along to the T-Junction and turn right down to the roundabout at the top of Bath Street. Turn left along Christchurch Street West and then right into Catherine Street. The property can be found on your right hand side.

Agents Note

At Forest Marble estate agents we bring together all of the latest technology and techniques available to sell or let your home; by listening to your specific requirements we will work with you so that together we can achieve the best possible price for your property. By using our unique customer guarantee we will give you access to a true 24/7 service (we are available when you are free to talk), local knowledge, experience and connections that you will find will deliver the service you finally want from your estate agent. Years of local knowledge covering Frome, Westbury, Warminster, Radstock, Midsomer Norton, North Dorset and all surrounding villages. We offer a full range of services including Sales, Lettings, Independent Financial Advice and conveyancing. In fact everything you need to help you move.





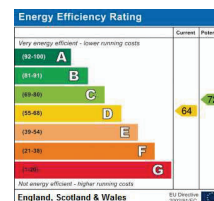
Forest Marble Ltd

Forest Marble, 4 Harris Close, Frome BA11 5JY

Call: 01373 482900

Web: www.forestmarble.co.uk

Email: lettings@forestmarble.co.uk



MONEY LAUNDERING REGULATIONS 2003 intending purchasers will be asked to produce identification and proof of financial status when an offer is received. We would ask for your co-operation in order that there will be no delay in agreeing the sale. Consumer Protection from Unfair Regulations 2008: The Agents has not tested any apparatus, equipment, fixtures and fittings, or services, so cannot verify that they are in working order or fit for the purpose. The buyer is advised to obtain verification from his or her Professional Buyer. References to the Tenure of the property are based on information supplied by the Vendor. The agents have not had sight of the title documents. The buyer is advised to obtain verification from their Solicitor. You are advised to check the availability of any property before travelling any distance to view.