



2 Atherfield Road.

Reigate

Guide Price £500,000



2 Atherfield Road

Looking for a three-bedroom home with home office space or a fourth bedroom? Then look no further. This lovely semi-detached family home has been extended to provide a family/dining room which overlooks the rear garden, a utility room, cloakroom/wc and an office which is currently used as bedroom four. To the front aspect you have a spacious lounge and a good size kitchen/diner with double doors leads you into the rear garden.

To the first floor you have three good sized bedrooms and the family bathroom. The master bedroom to the front with a second double to the rear and the third bedroom being a small double. Outside is a lovely rear garden with patio area providing the perfect space to relax with family and friends. To the front a private drive for two cars completes this beautiful family home, truly a must see.

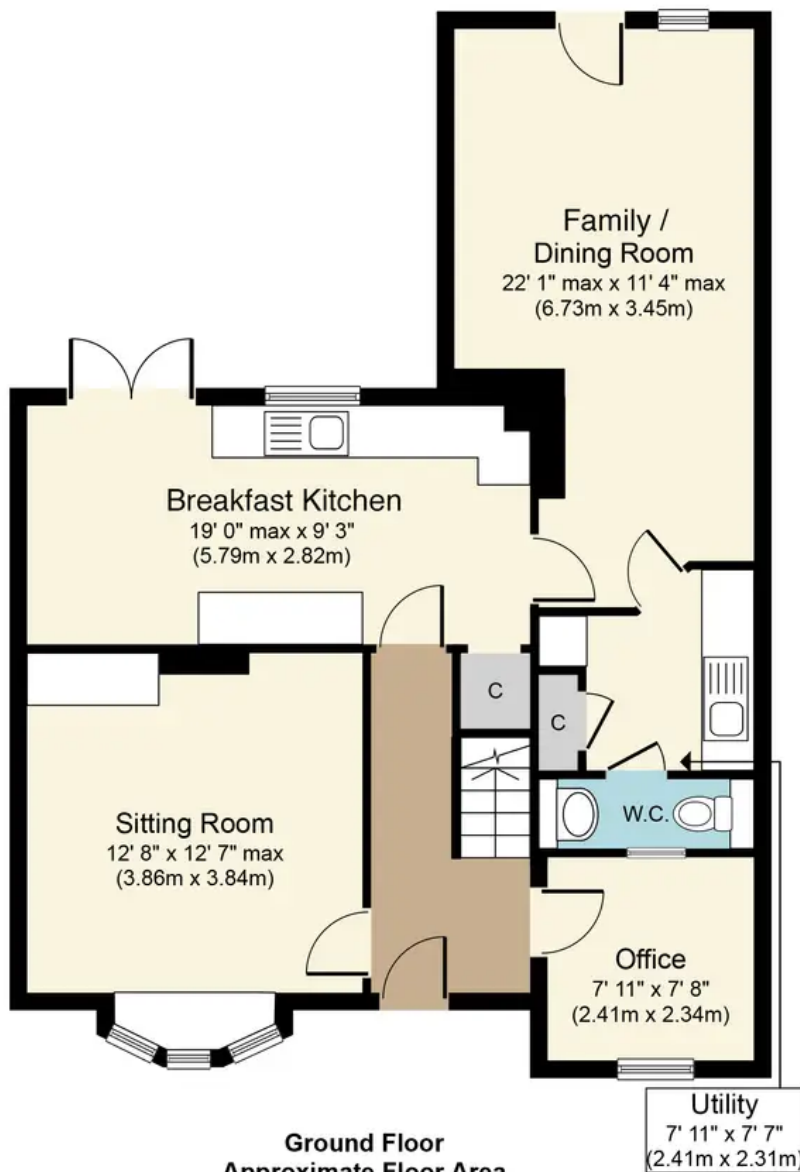
Council Tax band: D

Tenure: Freehold

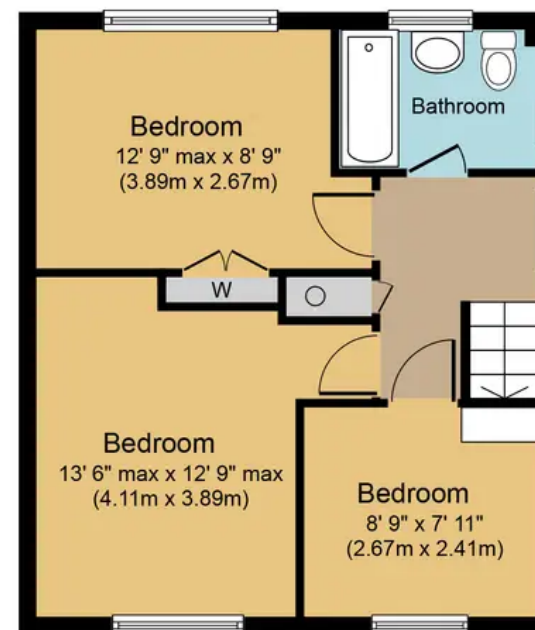
- Three/four Bedroom Semi-detached
- Extended To The Ground Floor
- Two Large Reception Rooms And A Kitchen Breakfast Room
- Utility Room And Cloakroom/wc
- Good Size Rear Garden
- Off Road Parking For Two Car







Ground Floor
Approximate Floor Area
810 sq. ft.
(75.2 sq. m.)



First Floor
Approximate Floor Area
421 sq. ft.
(39.1 sq. m.)

Atherfield Road, RH2
Approx. Gross Internal Floor Area 1,231 sq. ft. (114.3 sq. m.)



Whilst every attempt has been made to ensure the accuracy of the floor plan contained here, measurements of doors, windows, rooms and any other items are approximate and no responsibility is taken for any error, omission, or mis-statement. The measurements should not be relied upon for valuation, transaction and/or funding purposes. This plan is for illustrative purposes only and should be used as such by any prospective purchaser or tenant. The services, systems and appliances shown have not been tested and no guarantee as to their operability or efficiency can be given.