



LAWRENCE RAND

24 Wilford Close, Northwood
£365,000



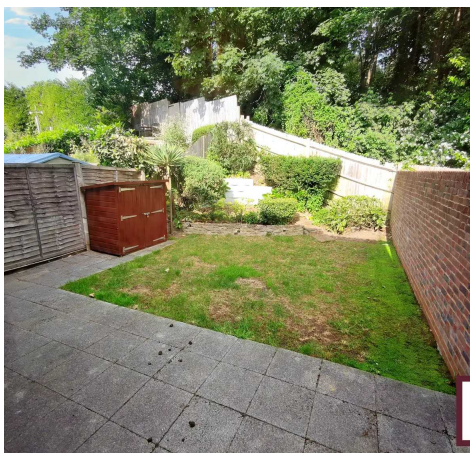
24 Wilford Close

Northwood, Northwood

A beautifully presented spacious, one bedroom purpose built garden maisonette, located 2 mins walk to Northwood High Street shops and station. Council Tax band: C

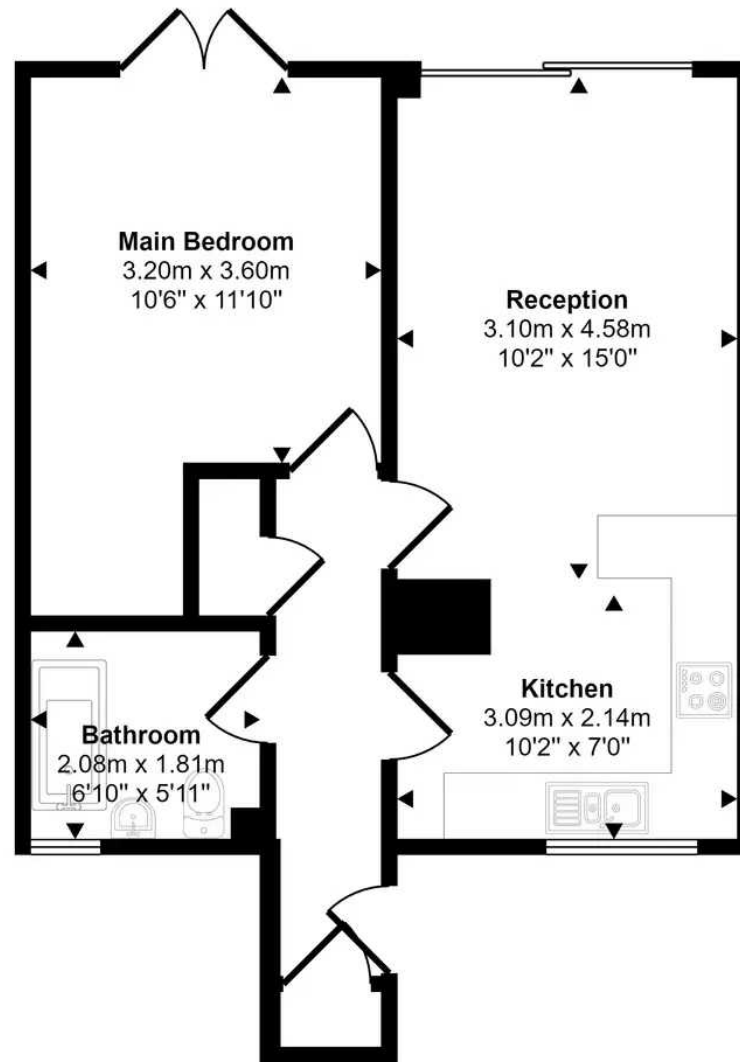
Tenure: Leasehold

- One bed maisonette
- Own garden
- Modern interiors
- Family sized bathroom
- Allocated parking
- Great transport links
- Walking distance to amenities





Approx Gross Internal Area
46 sq m / 498 sq ft



Floorplan

This floorplan is only for illustrative purposes and is not to scale. Measurements of rooms, doors, windows, and any items are approximate and no responsibility is taken for any error, omission or mis-statement. Icons of items such as bathroom suites are representations only and may not look like the real items. Made with Made Snappy 360.



Lawrence Rand

Lawrence Rand, 106 Victoria Road - HA4 0AL

01895 632211

Info@lawrence-rand.co.uk

www.lawrence-rand.co.uk/



LAWRENCE RAND