

Apperley Farm

STOCKSFIELD | NORTHUMBERLAND



FINEST
PROPERTIES



A wonderful historic property with beautiful formal
gardens, impressive equestrian facilities and land

Stocksfield Station 3.4 miles | Corbridge 8.9 miles | Hexham 11.5 miles
Newcastle City Centre 15.4 miles | Newcastle International Airport 18.1 miles





Accommodation in Brief

Apperley Farm

Vestibule | Entrance Hall | Drawing Room | Sitting Room | Dining Room
Kitchen/Breakfast Room | Pantry | Laundry/Utility Room | Boot Room
Ground Floor WC | Five First Floor Bedrooms | Bathroom | Shower Room
| First Floor WC | Office | Principal Bedroom Suite with Dressing Room &
Shower Room | Basement

Externally

Garage with First Floor Storage | Store Rooms | Gardeners WC
Boiler House | Fuel Store | Formal Gardens | Vegetable Garden
Orchard | Woodland

Equestrian Facilities

Stables | Tack Room & Hay Store | Arena | Paddocks | Field Shelter







The Property

A magnificent and historic Grade II Listed country house, Apperley Farm stands in imposing fashion to overlook extensive grounds that encompass elegant formal gardens, an orchard, woodland and fabulous equestrian facilities served by well-maintained paddocks. The beautiful six bedroom stone-built house was originally built in the 17th century and was home to the local Boutflower family until 1766. Major work to extend and remodel was undertaken around 1930 by Lord Gort, a notable figure in the British Army in the 20th century. The property today displays all the hallmarks of a fascinating history, with features including original door surrounds, fireplaces and charming beamed ceilings along with stone mullioned and leaded windows.

The stout and sturdy oak front door offers a characteristically striking welcome, leading through a vestibule to the grand hall with access to the ground floor accommodation and wide oak staircase rising to the first floor. To the east of the hall is the expansive drawing room, a stunning reception room with windows to all four sides and an impressive fireplace of stone and brick with a warming woodburning stove. On the opposite side of the hall is the dining room for wonderful formal occasions. Entertaining and dining can be enjoyed beneath the eye-catching timber ceiling beams whilst maple flooring runs underfoot. Adjoining the dining room is the sitting room with further relaxing reception space. Both rooms benefit from a southerly outlook over the formal gardens.

The kitchen/breakfast room is spacious yet also homely and cosy, with a traditional country house style and atmosphere married with the modern luxury of underfloor heating. The fine range of cabinetry houses quality integrated appliances and boasts granite worksurfaces, as does the complementary central island. The centrepiece is a wonderful traditional oil-fired AGA with electric companion set within a wide inglenook with exposed brickwork, timber mantel over and charming period tiling. The room flows on to offer plenty of space for a table and chairs for day-to-day dining.

A staircase from the rear corner climbs to the first floor and there is access to a rear hall with external doors to front and back. The kitchen is served by an adjoining laundry/utility room and a walk-in pantry. The ground floor is completed by a useful WC and a boot room to the rear, perfect for muddy boots when returning from a day of equestrian activity or local exploration.

There are five bedrooms arranged across the first floor, all appointed in crisp, elegant style for absolute relaxation. In addition to the bedrooms there is also an office, ideal for working from home. There is great versatility to configure the first floor accommodation for individual requirements, with the option to create a nursery, play room, further study space or a hobby room. The bedrooms are served by a bathroom and a separate shower room. The bathroom has a sleek contemporary suite incorporating bath, shower cubicle and heated towel rail along with a wash hand basin and WC set in a vanity unit. The shower room features a shower with wash hand basin and WC. Another separate WC adds further practicality.

A concealed staircase from the first floor hall leads up to the second floor and the bright and airy principal suite. Light décor and subtle lighting highlight the exposed beams. The expansive bedroom has a private dressing room and a fully tiled en-suite shower room with a contemporary boutique style.

The property also has a basement with ample storage space, and also additional attic space that could potentially be developed, subject to securing the necessary consents.



Externally

Apperley Farm is set in extensive gardens and grounds extending in all to around 11.79 acres and approached along a private woodland drive that approaches the western elevation. The formal gardens extend away from the front elevation in a southerly direction to capture the best of the sunlight throughout the day and at all times of the year. Manicured lawns are separated and defined by colourful plantings and attractive topiary, with the whole garden surrounded by handsome Grade II Listed stone walls. A summerhouse sits to one side with patio and outdoor seating space.

Beyond the formal garden there is an orchard of 250 apple trees, whilst an area of woodland to the west provides shelter and privacy. For the keen cottage gardener there is a vegetable garden with raised beds and a greenhouse. Garden stores and a gardener's WC adjoin the garage which is to the rear of the house. The garage provided secure parking and also has an upper floor with more useful storage space. A separate purpose-built outbuilding houses the biomass boiler and a fuel store for the boiler pellets.

The equestrian facilities will be hugely appealing to any interested parties looking for a comprehensive yet manageable set up in a beautiful location. The south-facing wooden stable block incorporates three loose boxes with a tack room and adjoining hay store. Mains electricity and water are connected. Hardstanding in front of the stables links directly to the superb 40m x 20m floodlit arena which is well-fenced and secure. A holding paddock of around 0.5 acres connects to the main paddock which extends to approximately 7 acres of excellent level land, stretching from the house and including the apple trees. Both paddocks benefit from water supplies, and a field shelter is nestled to one side of the main field.





Local Information

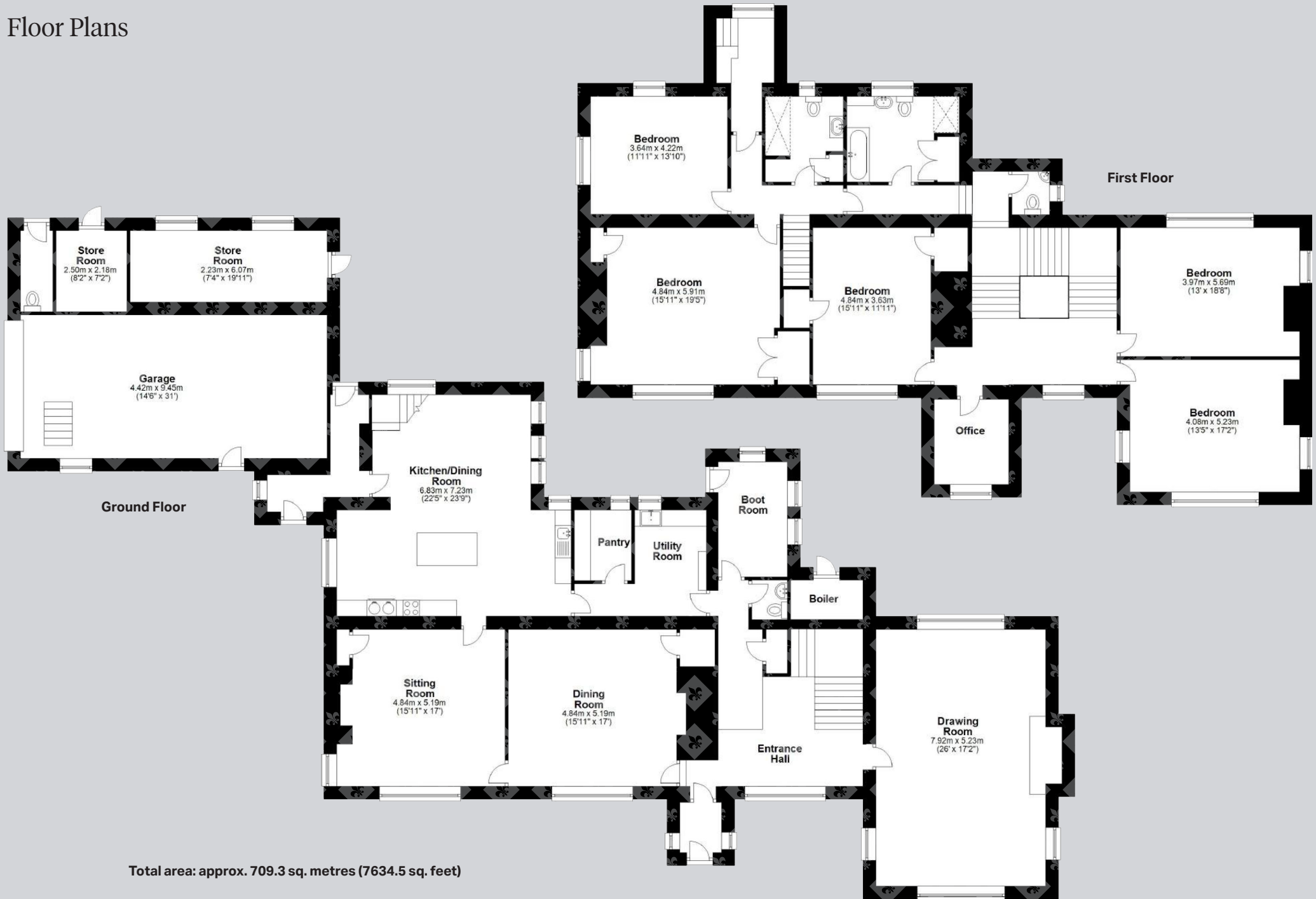
Stocksfield is a popular, attractive Tyne Valley commuter village situated on the south bank of the River Tyne. The village offers local amenities including a range of shops, doctors' surgery, garage, post office and sports facilities including a golf course and tennis club. The village provides an excellent alternative to city life, giving an opportunity to enjoy the rural situation with good access to city and business centres. For the outdoor enthusiast, the beautiful surrounding Northumberland countryside offers stunning views and excellent walks. Nearby Corbridge has a wide variety of local amenities including a range of artisan shops, a renowned delicatessen, supermarket, restaurants, inns, doctor and dentist surgeries, community services and a garage, while Matfen Hall and Close House offer excellent leisure facilities including spa, gym, golf courses and driving range. The market town of Hexham provides further professional, retail and recreational services including a hospital while Newcastle city centre provides comprehensive cultural, educational, recreational and shopping facilities. There are also excellent shooting and hunting facilities nearby.

For schooling, there is a primary school in the village, while senior schooling is available in Prudhoe and Hexham. In addition, Mowden Hall Preparatory School provides private education from nursery up to 13 years, and there are several private day schools in Newcastle.

For the commuter, there are excellent road links east and west to Newcastle and Carlisle, with onward access to the A1 and M6 respectively. The rail station in Stocksfield provides regular cross-country services, which in turn link to other main line services to major UK cities. Newcastle International Airport is also easily accessible.



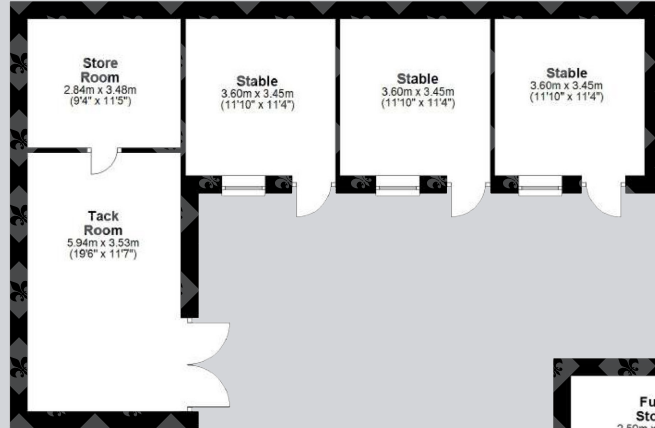
Floor Plans



Total area: approx. 709.3 sq. metres (7634.5 sq. feet)



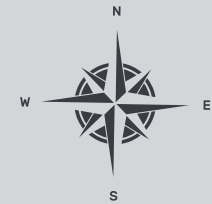
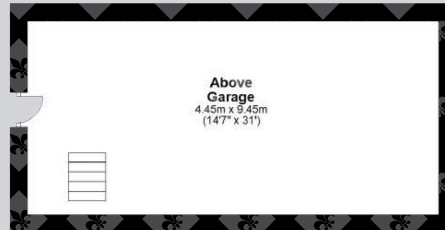
Second Floor



Ground Floor



Basement



Directions

From Corbridge take the B6321 out of the village going over the River Tyne then at the roundabout take the first exit onto Station Road (B6529). Follow this road onto Tinkler's Bank and continue on the A695 for approximately 5 miles. At Broomhaugh roundabout take the second exit to stay on the A695 and continue into Stocksfield. On entering Stocksfield, continue through the village for 1.1 miles then turn right onto New Ridley Road. Stay on new Ridley Road, passing the entrance for Stocksfield Golf Club and after another 0.3 miles turn left onto the lane marked with "no through road" signs. Continue for 0.6 miles and take the second left turn; Apperley Farm is straight ahead after around 125m.

Google Maps

what3words



///collect.shoppers.height

Wayleaves, Easements & Rights of Way

The property is being sold subject to all existing wayleaves, easements and rights of way, whether or not specified within the sales particulars.

Services

Mains electricity and water. Drainage to septic tank. Biomass (pellet or logs) boiler central heating which also generates quarterly RHI (Renewable Heat Incentive) scheme payments. Oil boilers as an alternative to the biomass system.
Underfloor heating to kitchen/breakfast room.

Postcode

NE43 7SJ

Council Tax

Band H

EPC

Rating E

Tenure

Freehold

Viewings Strictly by Appointment

T: 01434 622234

E: corbridge@finestgroup.co.uk







Finest Properties

15 Market Place | Corbridge | Northumberland | NE45 5AW

01434 622234

corbridge@finestgroup.co.uk

finestproperties.co.uk

*Specialists in the marketing
of distinctive property*

IMPORTANT INFORMATION Finest Properties, for themselves and for the Vendors and Lessors of this property whose Agents they are give notice that: (1) The particulars are set out as a general outline only for the guidance of intended purchasers or lessees and do not constitute, nor constitute part of, an offer or contract; (2) All descriptions, dimensions, reference to condition and necessary permissions for use and occupation and other details are given without responsibility and any intending purchasers or tenants should not rely on them as statements or representations of fact, but must satisfy themselves by inspection or otherwise as to the correctness of each of them; (3) No person in the employment of Finest Properties, has any authority to make or give any representation or warranty whatever in relation to this property.