



 4

Bedrooms

 2

Bathrooms



This beautiful family home built by Fisher and Dean, a renowned local building company, has been finished to an exceptionally high standard and is located in the desirable old part of the village of St Georges. The property offers 4 generous sized bedroom, family accommodation briefly comprising: well fitted kitchen/diner that benefits a fantastic family room on to the rear as well as a double garage and several off street parking spaces. Additionally, benefitting from a south facing garden that enjoys all day sun. Being conveniently located close to local amenities including the range of retail outlets in Worle. The M5 interchange at St Georges is just a short drive away for commuting to Bristol etc, additionally the property sits within the catchment area for the Priory Accadamy School accredited as outstanding by Ofsted.

The property is also equipped with the latest range of technology to ensure maximum efficiency, this includes:

- Dual zone heating upstairs and downstairs.
- Triple glazed windows.
- Thermal solar panels feeding hot water and heating system, backed up by the gas.



- **Enclosed Sunny Rear Garden.**

**Parking**

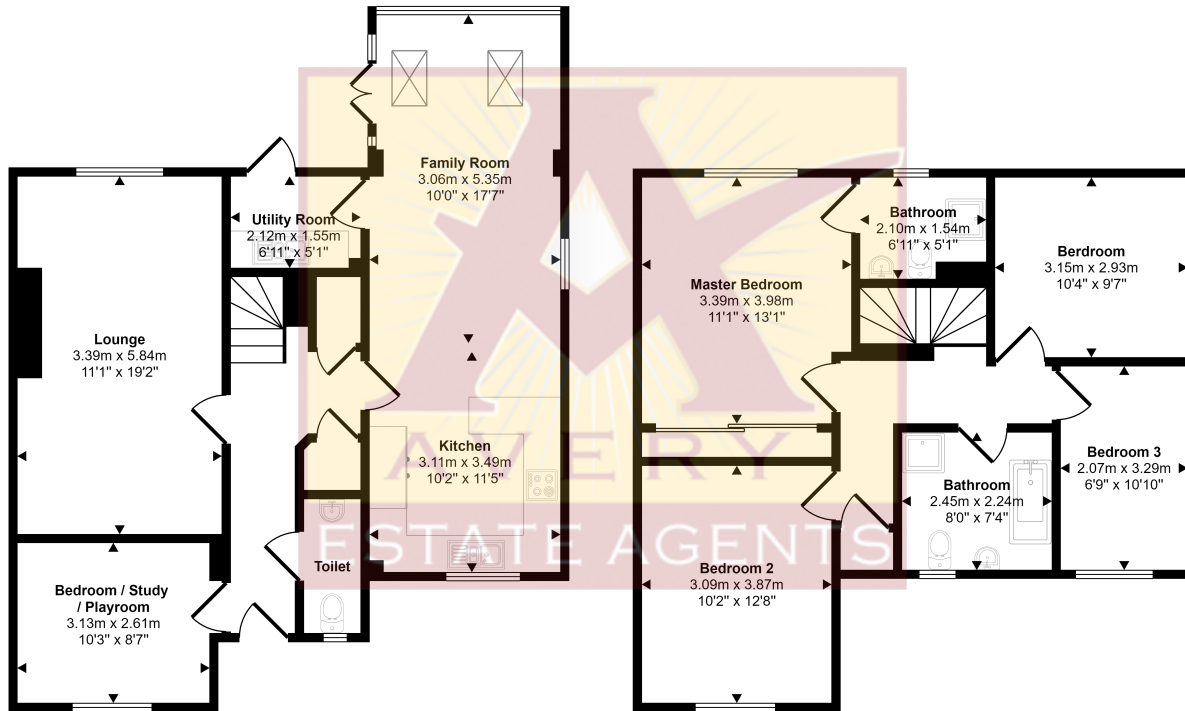
- **Built by Reputable Fisher & Dean**

- **Great Family Home!**





Approx Gross Internal Area  
138 sq m / 1484 sq ft



This floorplan is only for illustrative purposes and is not to scale. Measurements of rooms, doors, windows, and any items are approximate and no responsibility is taken for any error, omission or mis-statement. Icons of items such as bathroom suites are representations only and may not look like the real items. Made with Made Snappy 360.

Energy Efficiency Rating		Current	Potential
Very energy efficient - lower running costs			
(92+)	<b>A</b>		<b>94</b>
(81-91)	<b>B</b>	<b>87</b>	
(69-80)	<b>C</b>		
(55-68)	<b>D</b>		
(39-54)	<b>E</b>		
(21-38)	<b>F</b>		
(1-20)	<b>G</b>		
Not energy efficient - higher running costs			
<b>England, Scotland &amp; Wales</b>		EU Directive 2002/91/EC	

Address: St. Georges, BS22

