



Stephen Tew  
**FOR SALE**  
01253 401111

27

**Macauley Avenue, Blackpool**

Blackpool

Offers Over **£120,000**

# 27 Macauley Avenue

Blackpool, Blackpool

Double fronted two bedroom mid-terraced property which has been recently renovated throughout. Situated on Macauley Avenue within close proximity of many amenities, schools, transport links and shops. The accommodation briefly comprises of entrance hall, lounge, kitchen-diner. To the first floor there are two DOUBLE bedrooms and a three piece bathroom suite. Externally there is an impressive sized paved low maintenance rear garden along with a paved front garden. Viewing is highly recommended to appreciate what is on offer.

Council Tax band: A

Tenure: Freehold

- Recently Renovated Throughout
- No Onward Chain
- Convenient Location
- Kitchen/Diner
- Close To Many Amenities
- Ideal First Time Buy





### Entrance Hall

### Lounge

11' 5" x 12' 0" (3.47m x 3.66m)

UPVC double glazed bay window to the front elevation, UPVC double glazed window to the rear elevation. Radiator.

### Kitchen Diner

18' 1" x 10' 8" (5.51m x 3.24m)

Impressive Kitchen Diner fitted with a matching range of base and wall units, integrated oven and four ring hob with extractor hood over, plumbing for washing machine, space for fridge freezer. UPVC double glazed bay window to the front elevation, UPVC double glazed window and door to the rear elevation. Radiator.

### Landing

Landing leading to bedrooms and bathroom

### Bedroom 1

13' 4" x 10' 0" (4.06m x 3.06m)

UPVC double glazed window to the front elevation, built in storage, radiator.

### Bedroom 2

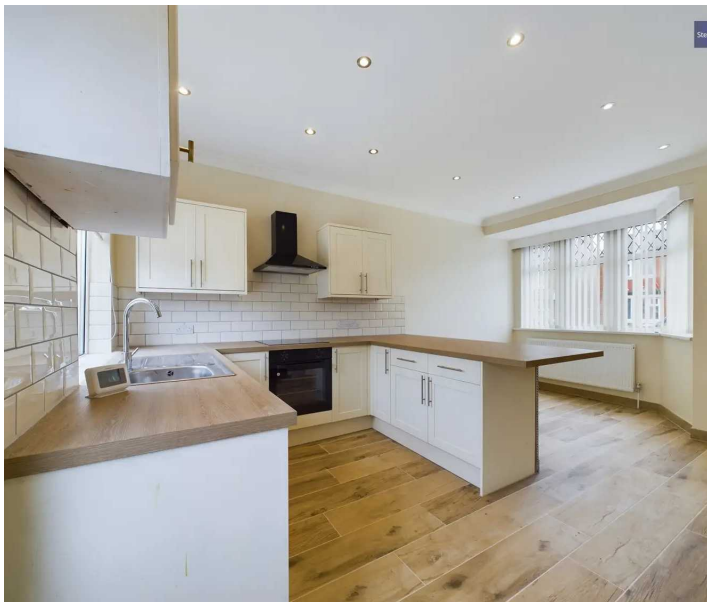
11' 4" x 11' 11" (3.46m x 3.64m)

UPVC double glazed windows to the front and rear elevation, built in storage, radiator.

### Bathroom

7' 9" x 4' 12" (2.36m x 1.52m)

Part-Tiled three piece bathroom suite comprising of white panelled bath with overhead shower, wall mounted hand wash basin, low flush WC, heated towel rail. UPVC double glazed opaque window.





### Entrance Hall

#### Lounge

11' 5" x 12' 0" (3.47m x 3.66m)

UPVC double glazed bay window to the front elevation, UPVC double glazed window to the rear elevation. Radiator.

#### Kitchen Diner

18' 1" x 10' 8" (5.51m x 3.24m)

Impressive Kitchen Diner fitted with a matching range of base and wall units, integrated oven and four ring hob with extractor hood over, plumbing for washing machine, space for fridge freezer. UPVC double glazed bay window to the front elevation, UPVC double glazed window and door to the rear elevation. Radiator.

#### Landing

Landing leading to bedrooms and bathroom

#### Bedroom 1

13' 4" x 10' 0" (4.06m x 3.06m)

UPVC double glazed window to the front elevation, built in storage, radiator.

#### Bedroom 2

11' 4" x 11' 11" (3.46m x 3.64m)

UPVC double glazed windows to the front and rear elevation, built in storage, radiator.

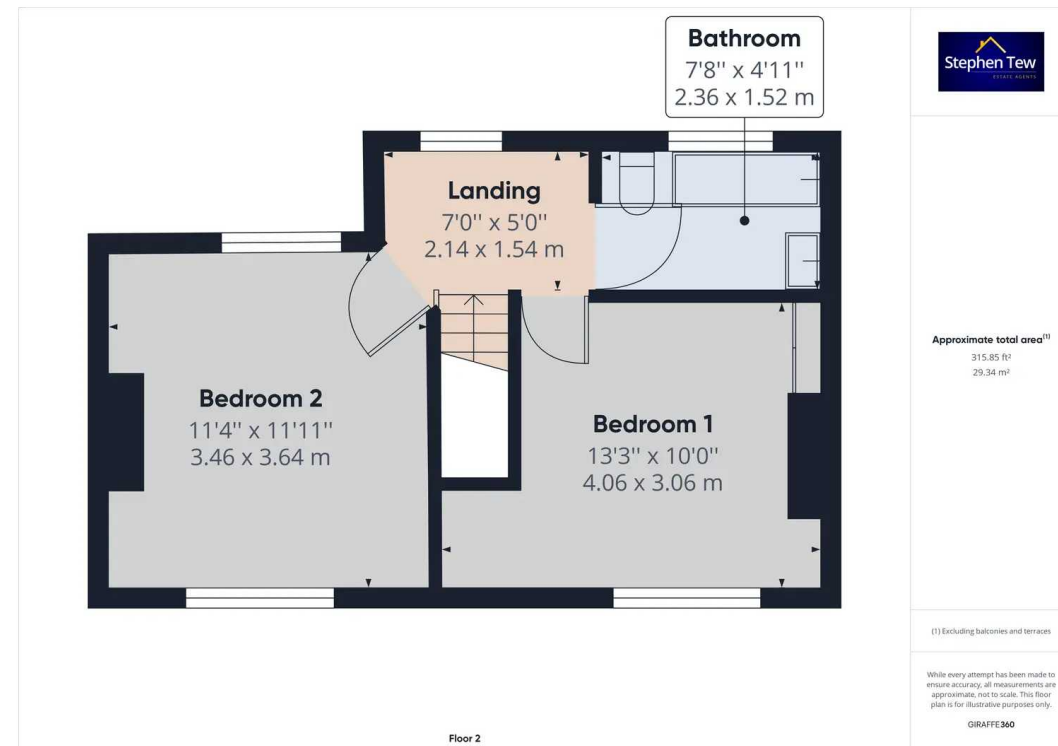
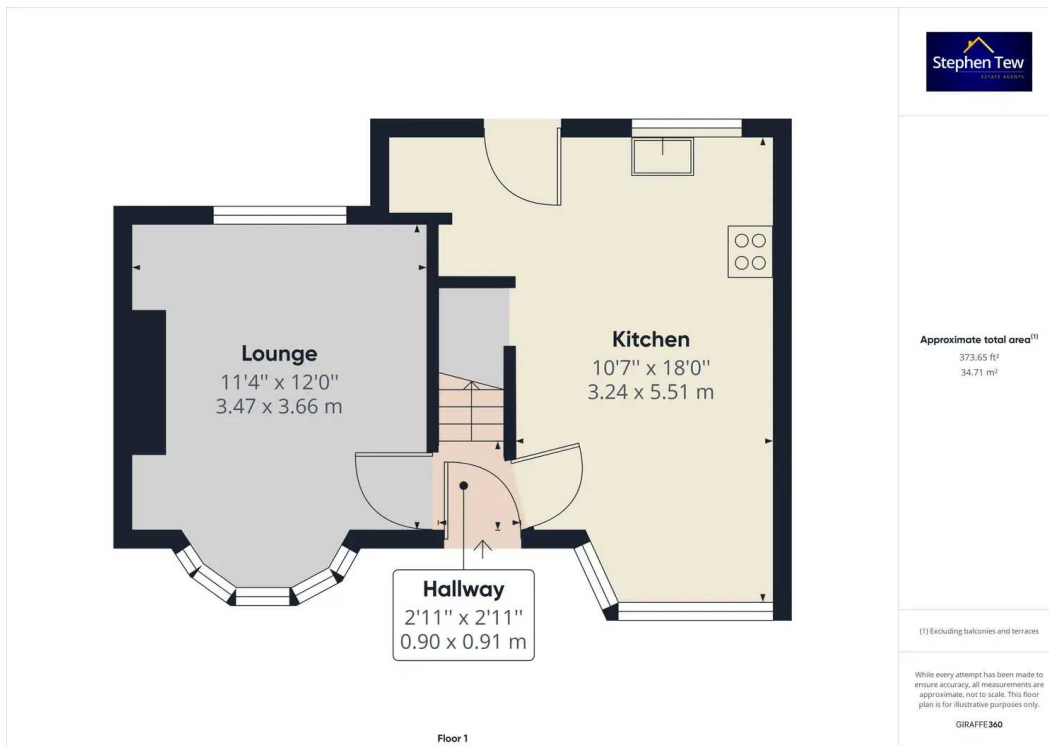
#### Bathroom

7' 9" x 4' 12" (2.36m x 1.52m)

Part-Tiled three piece bathroom suite comprising of white panelled bath with overhead shower, wall mounted hand wash basin, low flush WC, heated towel rail. UPVC double glazed opaque window.









## Stephen Tew Estate Agents

Stephen Tew Estate Agents, 132 Highfield Road - FY4 2HH

01253 401111

[info@stephentew.co.uk](mailto:info@stephentew.co.uk)

[www.stephentew.co.uk](http://www.stephentew.co.uk)

