



LAWRENCE RAND

175 Shaftesbury Avenue, Harrow
£325,000



175 Shaftesbury Avenue

, Harrow

A two bedroom, first floor maisonette. Has it's own private entrance, private garden to the rear and a parking spot to the front. It is walking distance to multiple transport links, requires complete modernisation and has NO UPPER CHAIN.

Council Tax band: C

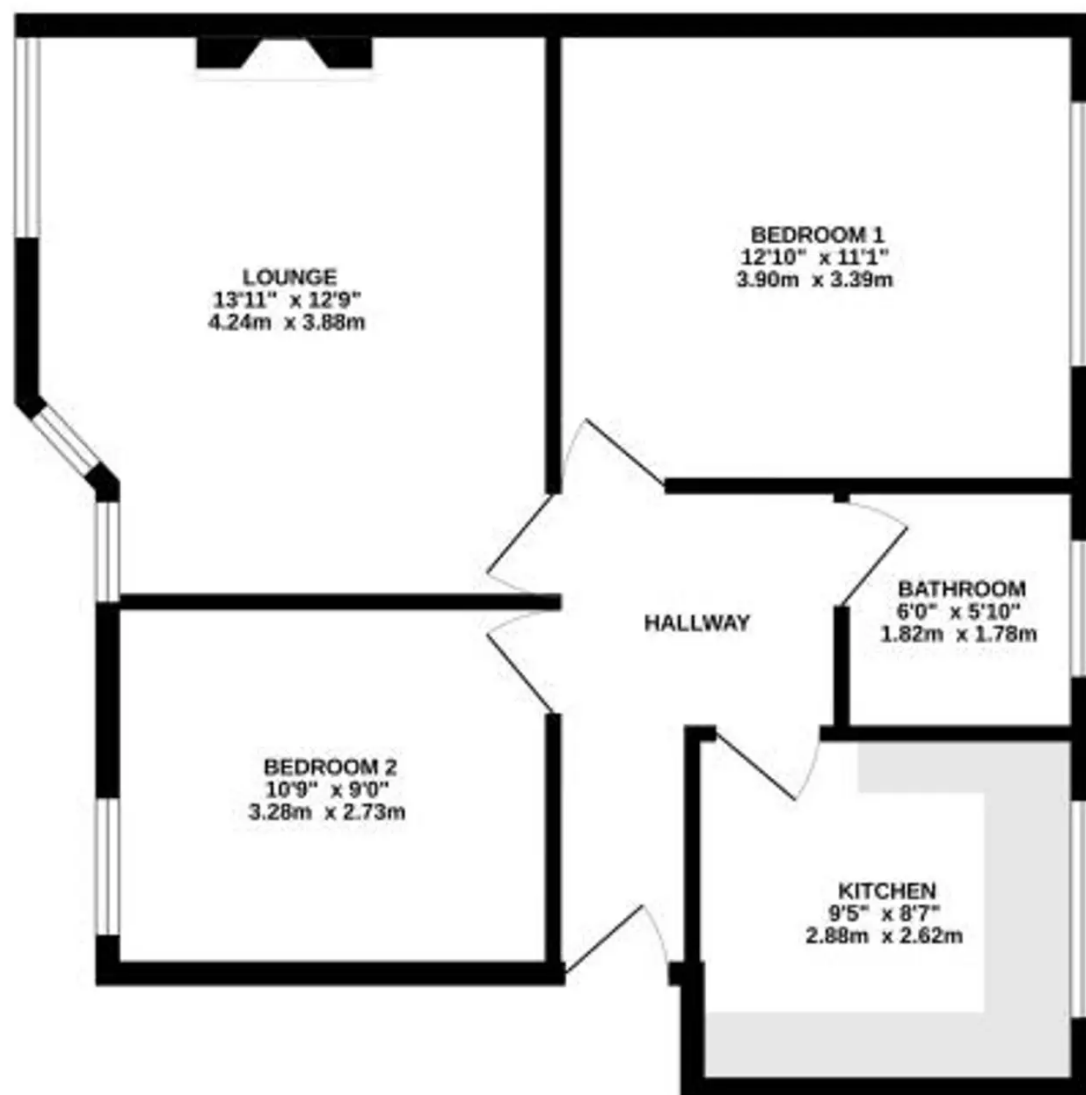
Tenure: Leasehold

- Two bedroom maisonette
- Long lease 930 + years
- First floor
- Private entrance
- Private rear garden
- Parking
- Requires modernisation
- Great transport links





FIRST FLOOR
581 sq.ft. (54.0 sq.m.) approx.





Lawrence Rand

Lawrence Rand, 106 Victoria Road - HA4 0AL

01895 632211

Info@lawrence-rand.co.uk

www.lawrence-rand.co.uk/



LAWRENCE RAND