



Desbox

East Richardson Street, High Wycombe, HP11 2EE

Desbox - flexible business space

138 to 700 sq ft
(12.82 to 65.03 sq m)

- 45 business units
- Aimed at the micro business economy
- 'Easy in / easy out' leases
- On site cafe
- Various sizes available
- Retail, office and storage units

Desbox, East Richardson Street, High Wycombe, HP11 2EE

Summary

Available Size	138 to 700 sq ft
Rent	£6,471 - £16,100 per annum Rent is inclusive of service charge and water rates ONLY
Business Rates	Upon Enquiry
VAT	Applicable
Legal Fees	Each party to bear their own costs
EPC Rating	B

Description

DesBox is open for business and the new home for many local entrepreneurs and businesses. It is located on the western edge of the town centre, opposite the Aldi store in Baker Street.

This is a 45 unit development of converted shipping containers, arranged over 3 floors including a ground floor cafe, meeting space and storage units. The units benefit from a sink, electrical sockets, LED lighting, intercom, night storage heaters and double glazing.

On site services include lift access to upper floors, 24 hour CCTV, secure access to the site and electronic vehicle gates.

The units are available to lease on an 'easy in / easy out' short term basis, offering start up and micro businesses the opportunity to secure good quality workspace in a working community setting.

Location

The development is located to the west of the town centre with frontage onto Baker Street, Short Street and East Richardson Street. Access is from East Richardson Street.

Accommodation

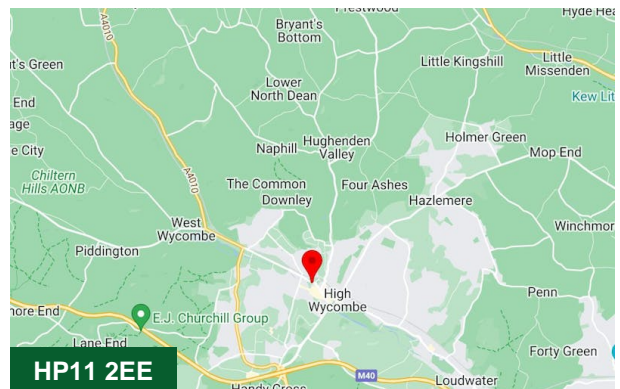
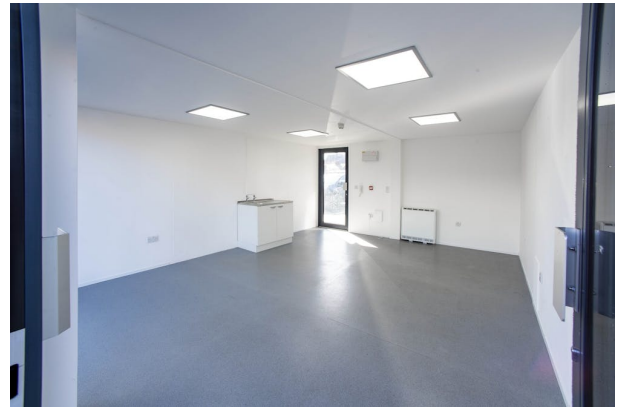
Name	sq ft	sq m	Rent	Availability
Unit - 122	283	26.29	£6,471 /annum	Available
Unit - 128	283	26.29	£6,471 /annum	Available
Unit - 239	283	26.29	£6,471 /annum	Available
Unit - 126	283	26.29	£6,471 /annum	Let
Unit - 127	283	26.29	£6,471 /annum	Let
Unit - 237	283	26.29	£6,471 /annum	Let
Unit - 242	283	26.29	£6,471 /annum	Let
Total	1,981	184.03		

Business Rates

For further information regarding your Rates Payable please contact your Local Authority or visit the website: www.gov.uk/find-business-rates

EPC

B35



Viewing & Further Information



Neave DaSilva

01494 446612 | 07827 908926
nds@chandlergarvey.com



James Garvey

01494 446612
jg@chandlergarvey.com