



LAWRENCE RAND

Malvern Avenue, Harrow

£825,000



223 Malvern Avenue

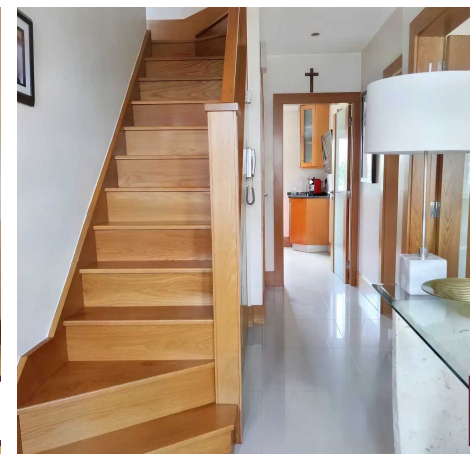
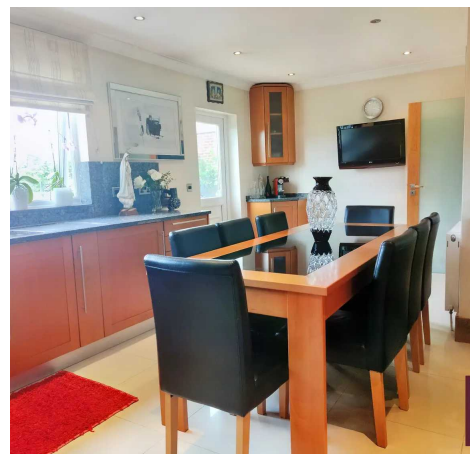
Harrow, Harrow

This five-bedroom, extended end of terrace house offers an abundance of living space for the growing family. Offered to the market in good decorative order throughout, in an ultra-convenient location close to shops and transport links.

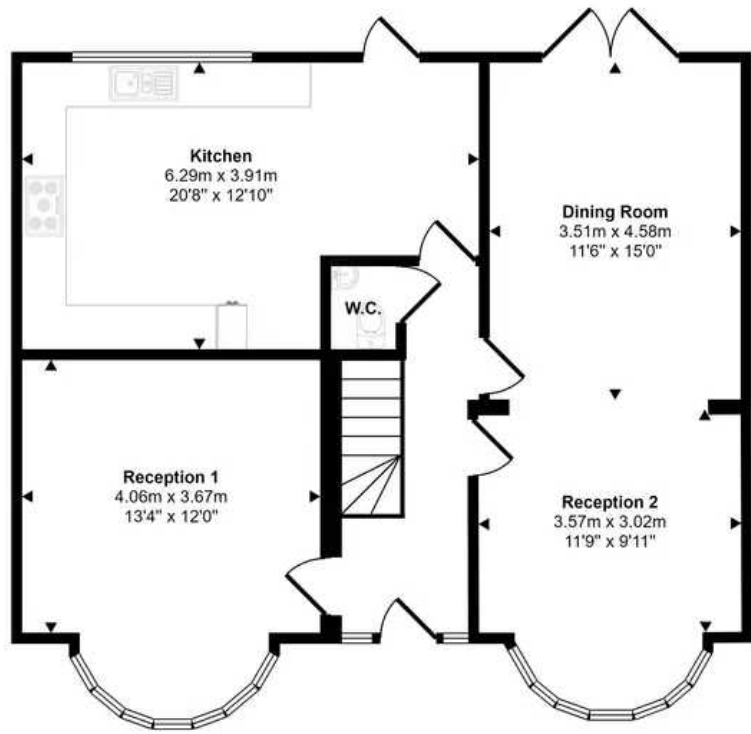
Council Tax band: E

Tenure: Freehold

- Extended End of Terrace House
- Two Receptions
- Five Bedrooms
- Master Ensuite
- Guest WC
- Secluded Manicured Garden
- Double Garage
- Large Kitchen
- Good Transport Links
- Highly Regarded Local Schools

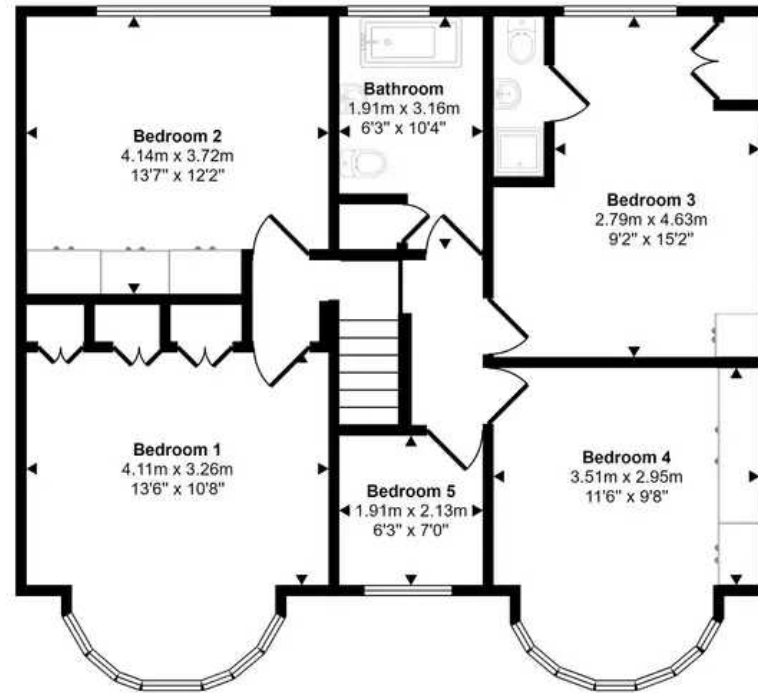




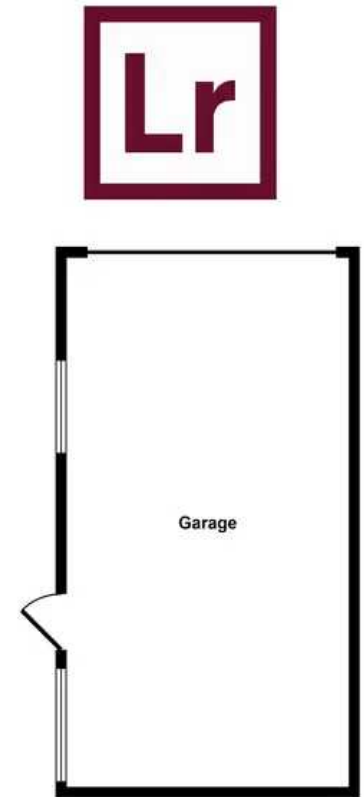


Ground Floor
Approx 81 sq m / 872 sq ft

Approx Gross Internal Area
191 sq m / 2058 sq ft



First Floor
Approx 82 sq m / 888 sq ft



Garage
Approx 28 sq m / 298 sq ft



This floorplan is only for illustrative purposes and is not to scale. Measurements of rooms, doors, windows, and any items are approximate and no responsibility is taken for any error, omission or mis-statement. Icons of items such as bathroom suites are representations only and may not look like the real items. Made with Made Snappy 360.



Lawrence Rand

Lawrence Rand, 106 Victoria Road - HA4 0AL

01895 632211

Info@lawrence-rand.co.uk

www.lawrence-rand.co.uk/



LAWRENCE RAND