



**LAWRENCE RAND**

Eastern Avenue, Pinner

£725,000



## Eastern Avenue

Pinner, Pinner

This well-proportioned three bedroom semi-detached house is being sold with no onward chain and is well located, being within close proximity to Canon Lane and Pinner High schools, and close to shops & stations.

Council Tax band: G

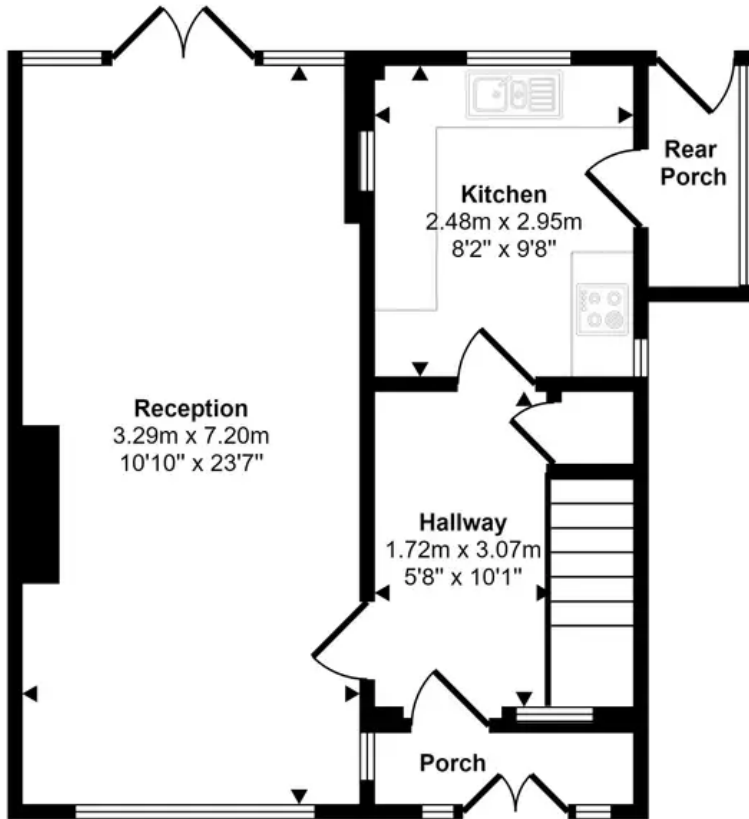
Tenure: Freehold

- Semi-detached house
- NO ONWARD CHAIN
- Three bedrooms
- Garage
- Potential to extend stpp
- Spacious accommodation
- Generous private garden

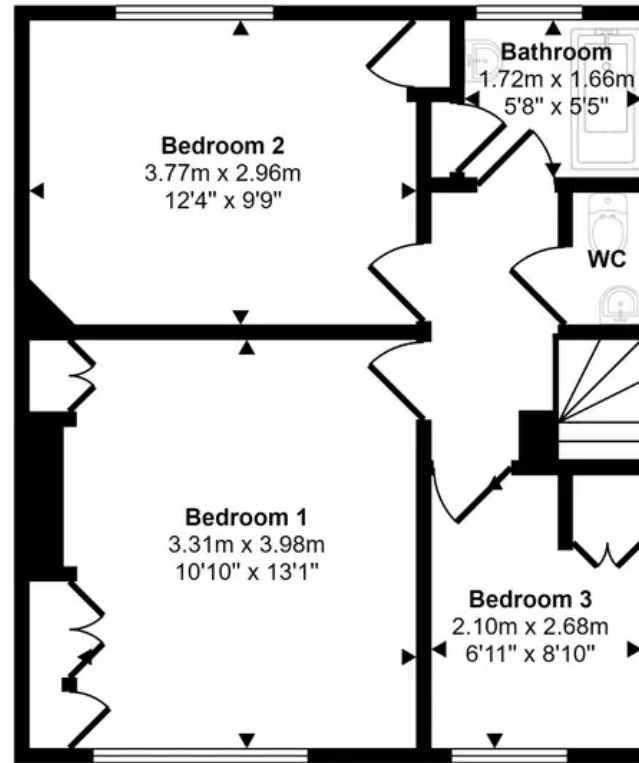




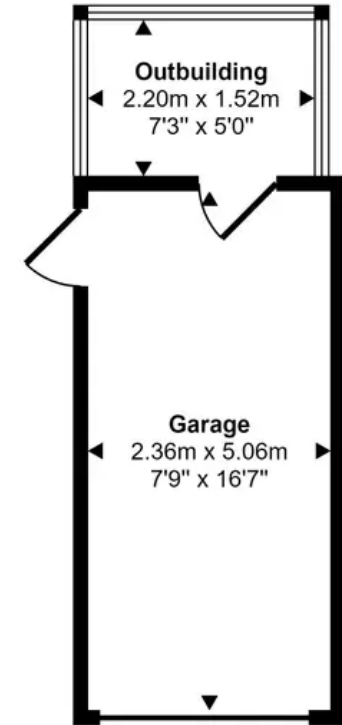
Approx Gross Internal Area  
103 sq m / 1107 sq ft



Ground Floor  
Approx 44 sq m / 479 sq ft



First Floor  
Approx 43 sq m / 460 sq ft



Garage / Outbuilding  
Approx 16 sq m / 168 sq ft

This floorplan is only for illustrative purposes and is not to scale. Measurements of rooms, doors, windows, and any items are approximate and no responsibility is taken for any error, omission or mis-statement. Icons of items such as bathroom suites are representations only and may not look like the real items. Made with Made Snappy 360.



## Lawrence Rand

Lawrence Rand, 106 Victoria Road - HA4 0AL

01895 632211

[Info@lawrence-rand.co.uk](mailto:Info@lawrence-rand.co.uk)

[www.lawrence-rand.co.uk/](http://www.lawrence-rand.co.uk/)



**LAWRENCE RAND**