



Cottage with Garden & Garages

The Hyde, Purton, Wiltshire, SN5 4DY

Guide Price £330,000

mcfarlane
property.com

Cottage with Gardens & Double Garage Purton North Wiltshire

-
- Stone Built Period Cottage
 - Two Double Bedrooms
 - Expansive Garden & Doble Garage
-

A delightful end of terrace period cottage located in The Hyde in Purton. This deceptively spacious cottage offers two reception rooms plus eat-in kitchen and two double bedrooms. The stone-built cottage offers an expansive rear garden with a detached double garage and numerous parking spaces. The cottage presents well and warrants an internal inspection, call sole selling agents McFarlane Cricklade on 01793 751044 viewings by appointment only.

Agents Note: We are advised the neighbours have a shared access via the driveway and to the rear.



Purton, North Wiltshire.

The Village of Purton is positioned some 5.5 miles (Northwest) of the town of Swindon, and 12.5 miles (South) of Cirencester the Capital of The Cotswolds. Purton offers a variety of amenities and a thriving community. There are numerous social clubs and organisations including junior and senior sporting teams. Purton is also renowned for St Mary's 13th Century Church that proudly boasts two towers, one with a spire.



We where you LIVE

Our team are friendly, experienced and are all local. They know it better than they do their own living rooms and can help you find what you're looking for because **we love where we live.**

We would be delighted to show you around this property.

Because every home needs a personal touch.

If you would like to view this property then please get in touch.

📞 01793 751044

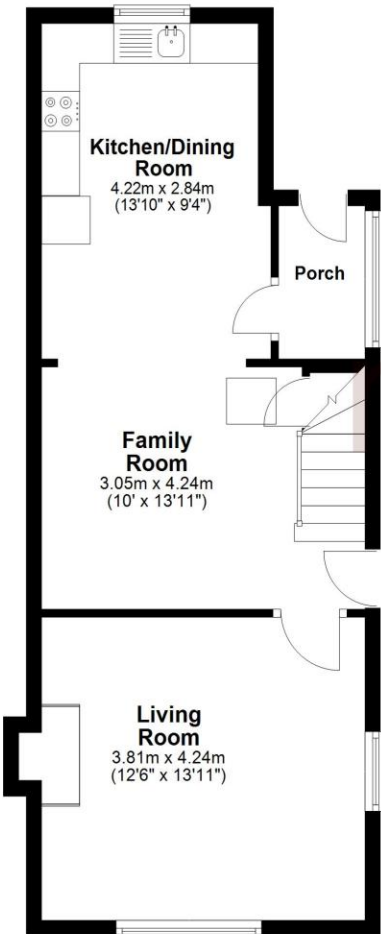
✉ cricklade@mcfarlaneproperty.com

mcfarlaneproperty.com

Agents Note: Whilst every care has been taken to prepare these sales particulars, they are for guidance purposes only. All measurements are approximate are for general guidance purposes only and whilst every care has been taken to ensure their accuracy, they should not be relied upon and potential buyers are advised to recheck the measurements

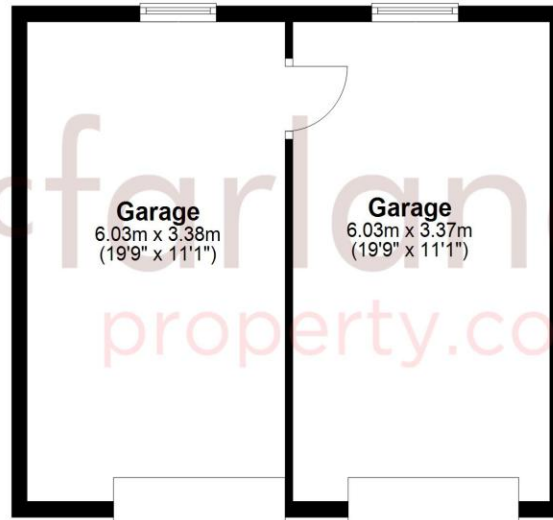
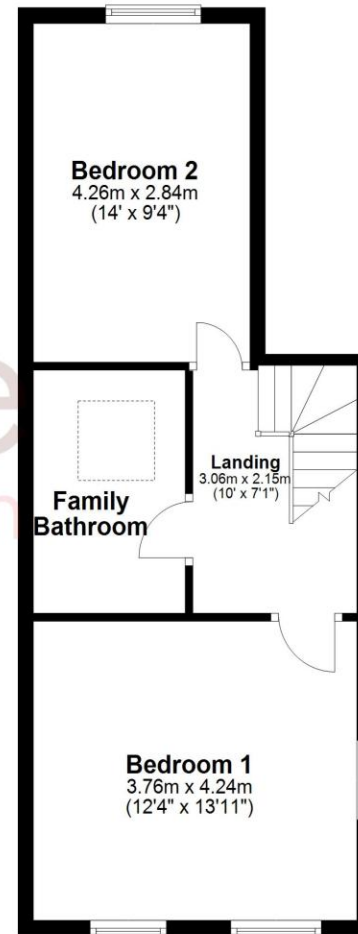
Ground Floor

Approx. 85.9 sq. metres (924.6 sq. feet)



First Floor

Approx. 41.7 sq. metres (448.9 sq. feet)



Please Note: The Garage does not represent the correct position at the Property. This plan is for identification purposes only.

Total area: approx. 127.6 sq. metres (1373.5 sq. feet)

mcfarlane
property.com

Cricklade.

102 High Street
Cricklade SN6 6AA

📞 01793 751044

Marlborough.

106 High Street
Marlborough SN8 1LT

📞 01672 514380

Old Town.

28-30 Wood Street
Swindon SN1 4AB

📞 01793 296880

Swindon.

The Village Centre,
Redhouse SN25 2FW

📞 01793 296600