



LAWRENCE RAND

Highfield Drive, Ickenham

£2,000,000



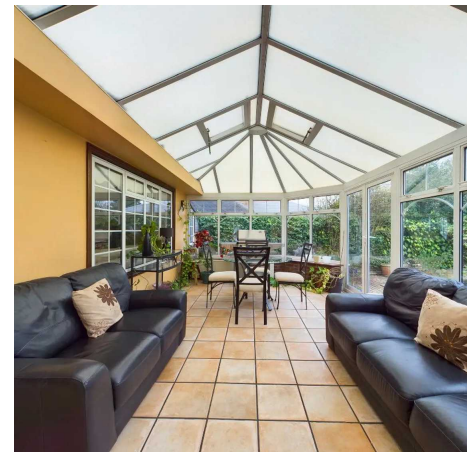
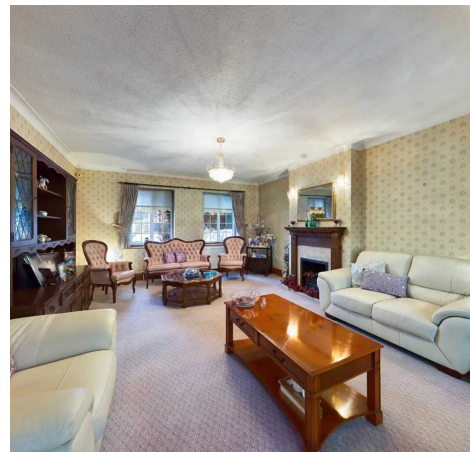
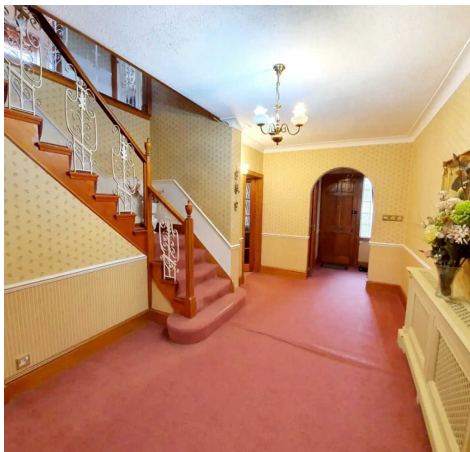
18 Highfield Drive

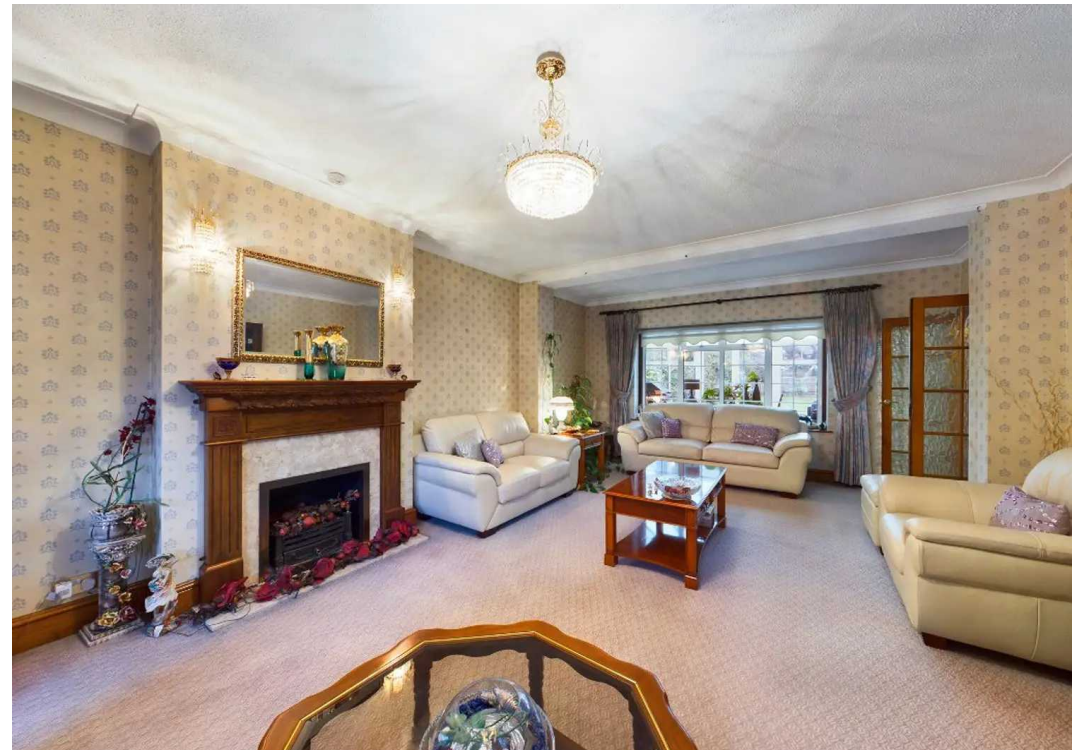
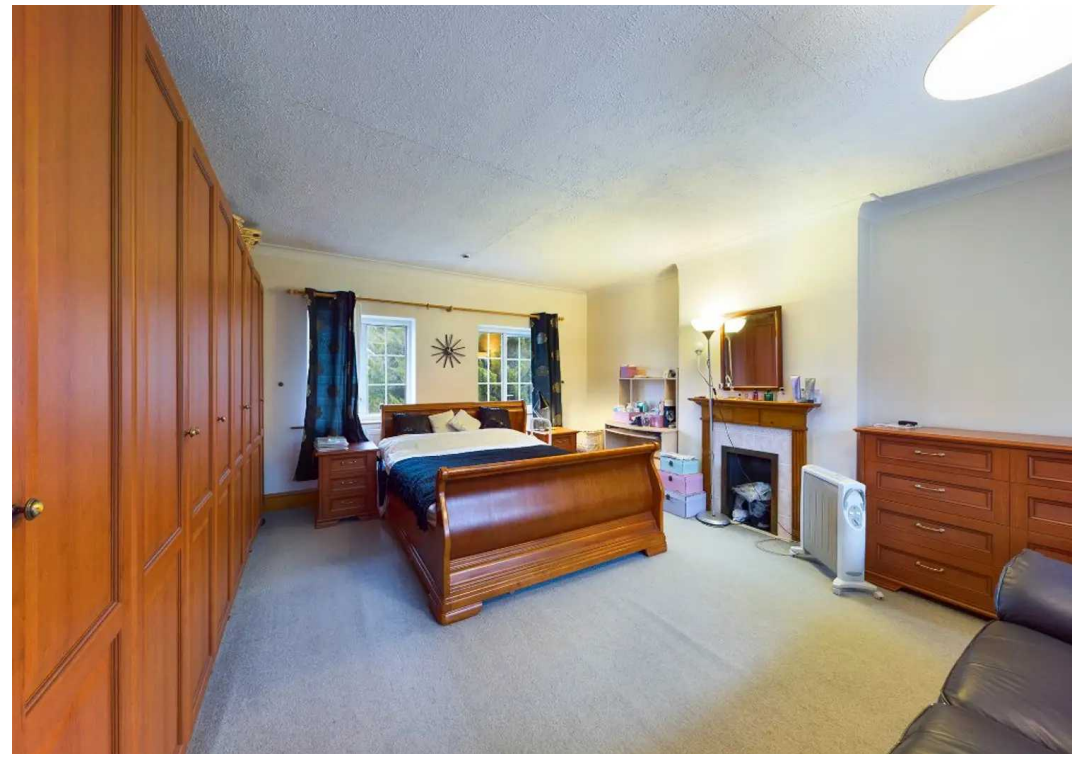
Ickenham, Uxbridge

This fabulous four bedroom detached family home on this prestigious road in Ickenham.
Council Tax band: H

Tenure: Freehold

- FOUR BEDROOM DETACHED HOUSE
- PRIVATE GARDEN
- TWO SPACIOUS RECEPTION ROOMS
- TWO MODERN BATHROOMS
- GROUND FLOOR WC
- CONSERVATORY
- CARRIAGE DRIVEWAY
- UTILITY ROOM







Ground Floor



1st Floor

Approximate net internal area: 2243.68 ft² / 208.45 m²

While every attempt has been made to ensure accuracy, all measurements are approximate, not to scale. This floor plan is for illustrative purpose only and should be used as such by any prospective tenant or purchaser.



Lawrence Rand

Lawrence Rand, 106 Victoria Road - HA4 0AL

01895 632211

Info@lawrence-rand.co.uk

www.lawrence-rand.co.uk/



LAWRENCE RAND