



**Black** to go  
**White**  
CLEARLY A BETTER SERVICE

107 GLEBE FARM ROAD, STETCHFORD, BIRMINGHAM, B33 9NP

OFFERS OVER £190,000





This 3 Bedroom property is a perfect investment, or first time buy.

situated in Stechford close to local schools, Shops and Transport Links

#### **Ground Floor**

##### **Entrance Hall**

Stairs, uPVC double glazed entrance door.

##### **Lounge** 4.09m (13'5") max x 3.66m (12')

UPVC double glazed window to front, double radiator and various power points.

##### **Kitchen** 2.81m (9'3") x 2.00m (6'7")

Fitted with a matching range of base and eye level units with worktop space over, 1+1/2 bowl sink with single drainer, fitted electric double oven, four ring gas hob, two uPVC double glazed windows to rear, door to the rear garden.



### **Bathroom**

Fitted with three-piece suite comprising bath, wash hand basin and low-level WC, tiled splashbacks, uPVC double glazed window to rear.

### **First Floor**

#### **Landing**

Fitted carpet

#### **Bedroom 1** 5.64m (18'6") x 3.13m (10'3")

Two uPVC double glazed windows to front, Storage cupboard, radiator and various Power Points.



#### **Bedroom 2** 3.33m (10'11") x 2.95m (9'8")

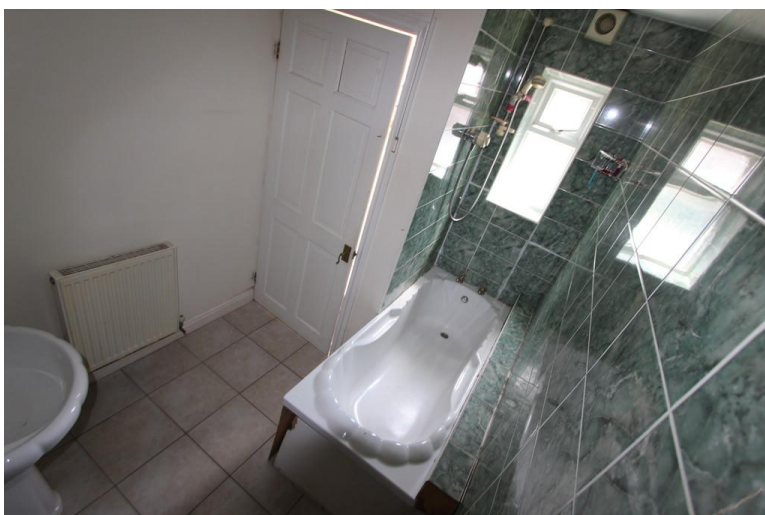
UPVC double glazed window to rear, radiator and Various Power Points

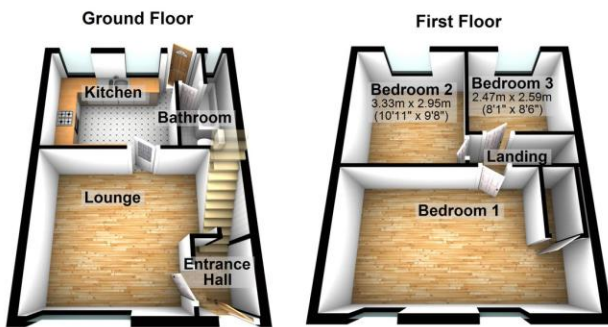
#### **Bedroom 3** 2.59m (8'6") x 2.47m (8'1")

UPVC double glazed window to rear, radiator and Various Power Points.

### **Outside Space**

Enclosed Rear Garden, with Paved patio area and Lawn area.





%epcGraph\_c\_1\_304%