

63A EAST HIGH STREET

CRIEFF, PERTSHIRE, PH7 3JA



IrvingGeddes
W.S. • Solicitors • Estate Agents

63A EAST HIGH STREET, CRIEFF, PH7 3JA

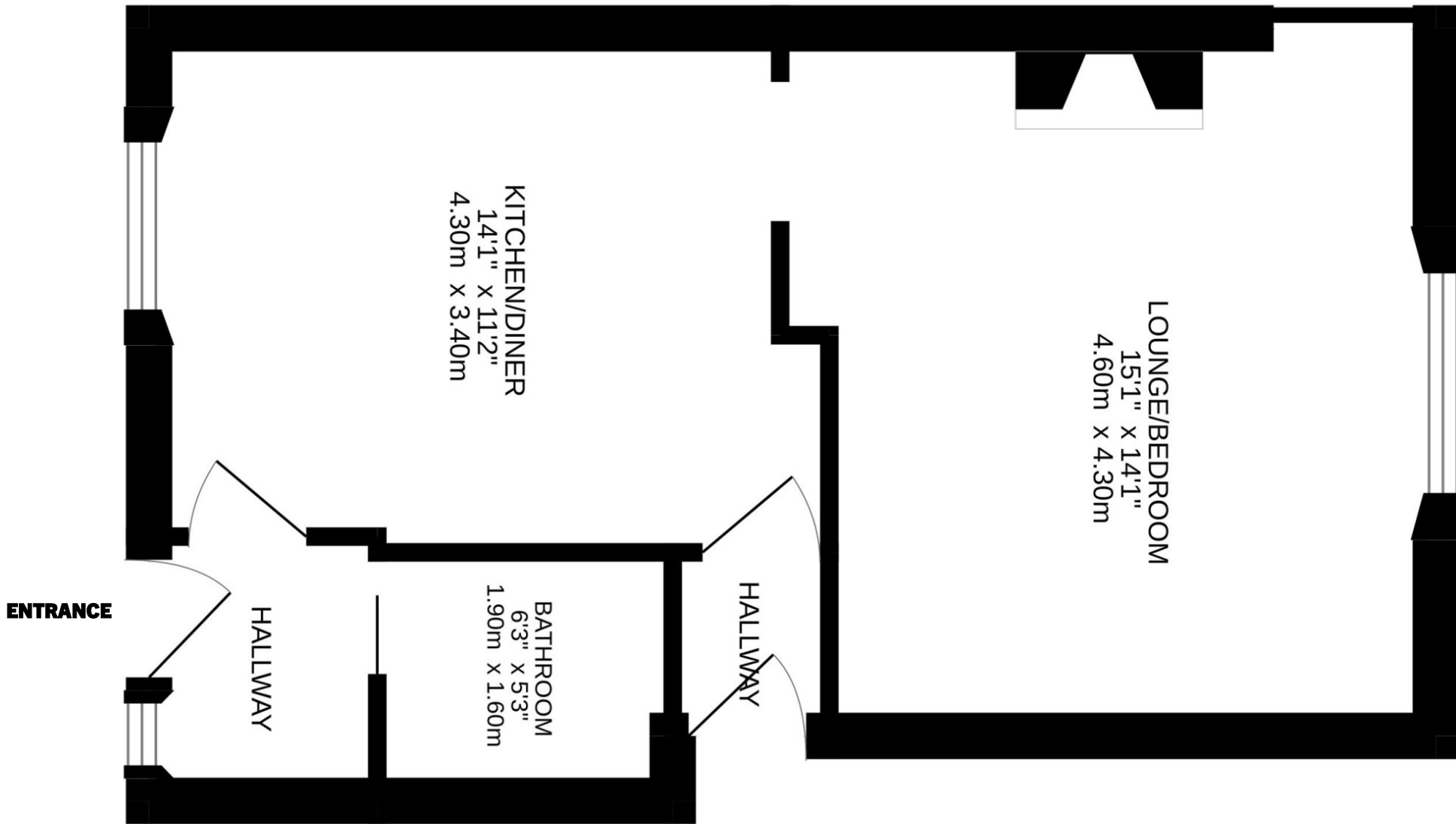
Irving Geddes are delighted to offer for sale this mid-terrace studio apartment, enjoying a central location in the popular market town of Crieff. The property shares access with one other property. The layout comprises; **Entrance Hall, Lounge/Bed area, partially fitted KITCHEN** leading to **Bathroom & Rear Porch** with plumbing for washing machine & door to small rear garden which is laid to lawn with handy storage shed.

Double glazed and warmed by gas central heating. Unrestricted parking is available nearby and restricted parking opposite. A property requiring upgrading/modernisation but would suit a variety of purchasers - significant letting potential for Buy to Let investors or first time buyers. Likely to have broad appeal, early viewing is advised.

Energy Performance Rated 'C' Council Tax Band 'A'







These particulars are believed to be correct, but their accuracy is not guaranteed and they do not form part of any contract. All measurements are approximate.

Crieff
25 West High Street, PH7 4AU
Tel: 01764 653771

Comrie
1 Drummond Street, PH6 2DW
Tel: 01764 670325

Aberfeldy
6 The Square, PH15 2DD
Tel: 01887 822722

Irving Geddes
W.S. • Solicitors • Estate Agents