



LAWRENCE RAND

Hillcroft Crescent, Ruislip

£579,950



Hillcroft Crescent

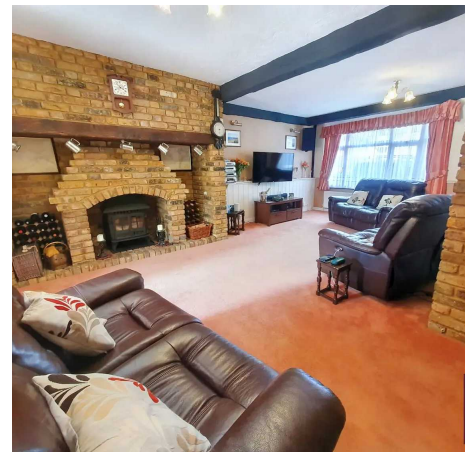
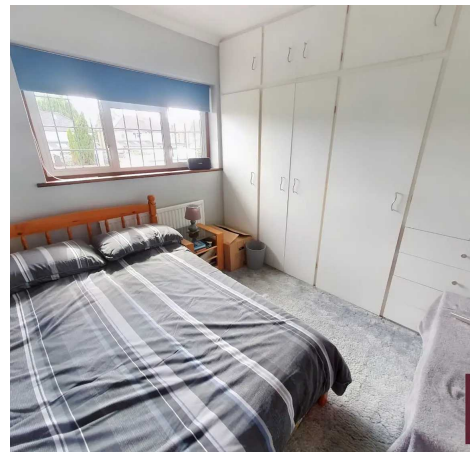
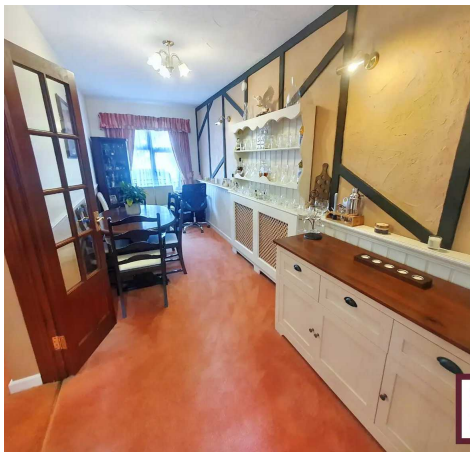
Ruislip, Ruislip

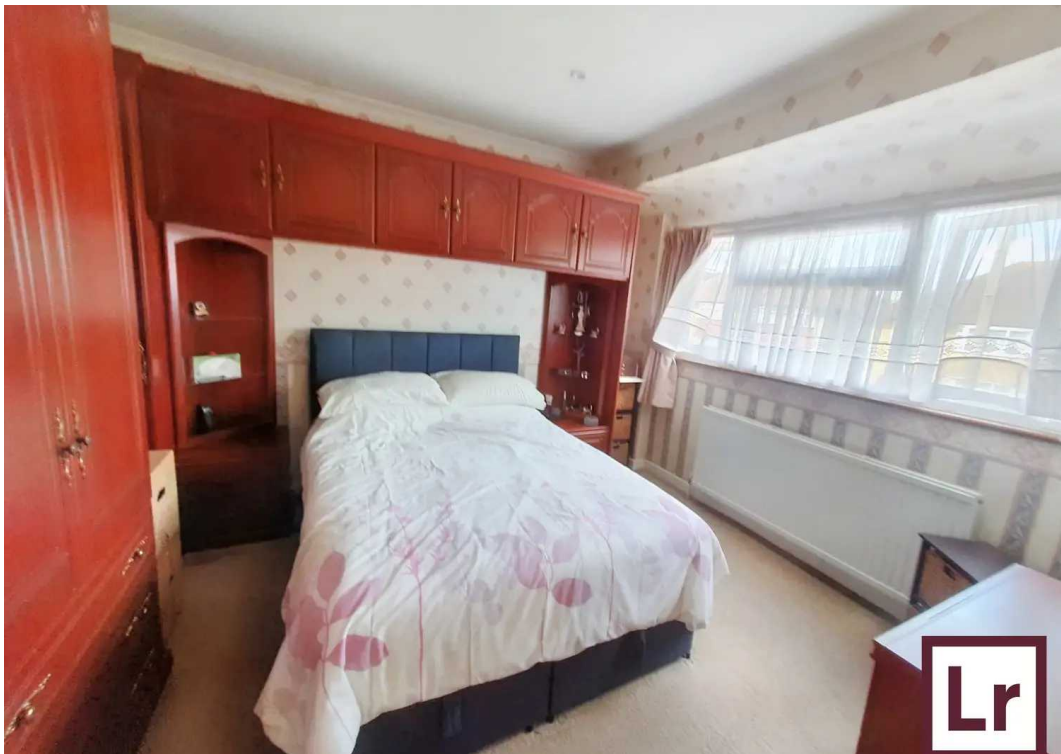
A larger than average three/four bedroom extended end of terrace family home, conveniently located close to a number of well-regarded local schools - including Field End & St. Swithun Wells Schools and a short distance from the shopping amenities and transport links of South Ruislip and Eastcote.

Council Tax band: D

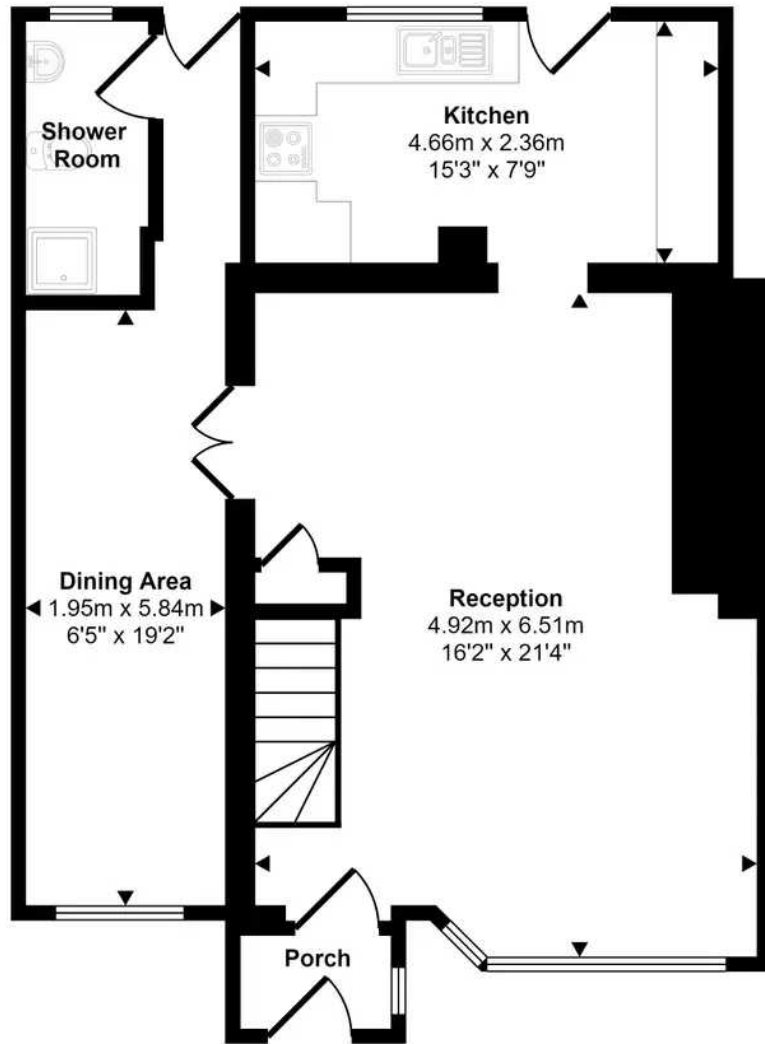
Tenure: Freehold

- Extended end terrace home
- 3/4 Bedrooms
- 2 Bathrooms
- Good size rear garden
- Ample off road parking
- Close to local schools
- Easy access to shops & station
- Popular road

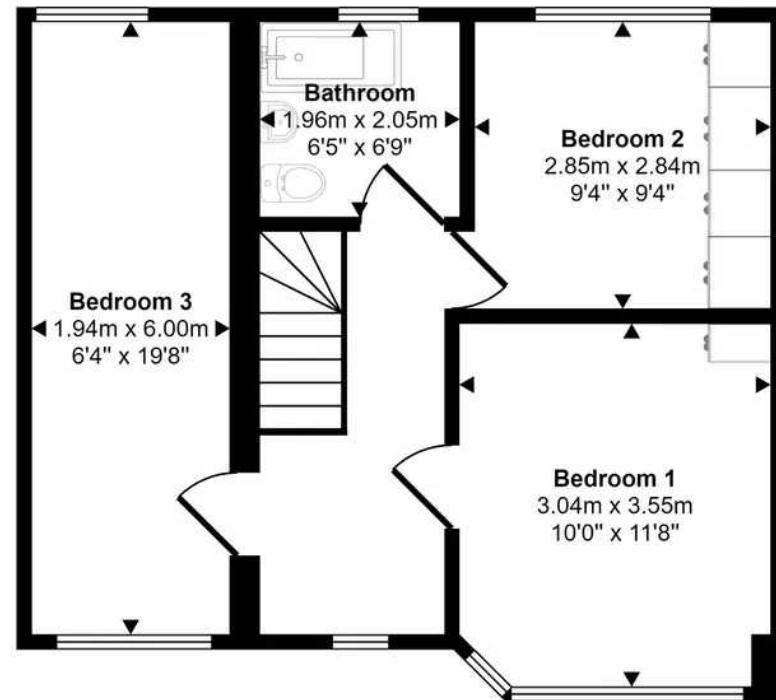




Approx Gross Internal Area
109 sq m / 1174 sq ft



Ground Floor
Approx 64 sq m / 691 sq ft



First Floor
Approx 45 sq m / 483 sq ft

This floorplan is only for illustrative purposes and is not to scale. Measurements of rooms, doors, windows, and any items are approximate and no responsibility is taken for any error, omission or mis-statement. Icons of items such as bathroom suites are representations only and may not look like the real items. Made with Made Snappy 360.



Lawrence Rand

Lawrence Rand, 106 Victoria Road - HA4 0AL

01895 632211

Info@lawrence-rand.co.uk

www.lawrence-rand.co.uk/



LAWRENCE RAND