



Constance Place, The Millfields, Plymouth, PL1 3NN

£220,000 FREEHOLD





Constance Place

The Millfields, Plymouth, PL1 3NN

Beautiful and unique mid terrace home, set in the heart of The Millfields – Complete with a living room, kitchen and two bathrooms and a downstairs cloakroom, two double bedrooms, study, allocated parking space. East & westerly facing gardens.

Council Tax band: B

Tenure: Freehold

- Two Double Bedrooms
- Allocated off road parking space
- 24 Hour Security
- Conservation Area
- Yellow brick
- Main Bedroom with en-suite



Constance Place

The Millfields, Plymouth, PL1 3NN

Nestled in the heart of Plymouth, UK, lies a hidden gem which was originally built as the Royal Naval hospital in Nelson's day. Welcome to The Millfields, this historic neighborhood effortlessly combines history, natural beauty, and modern amenities.

Welcome to our two bed terrace home in the heart of Plymouth, UK, located in The Millfields. This residence offers a remarkable living experience, combining modern comforts with timeless character and a prime location within a designated conservation area.

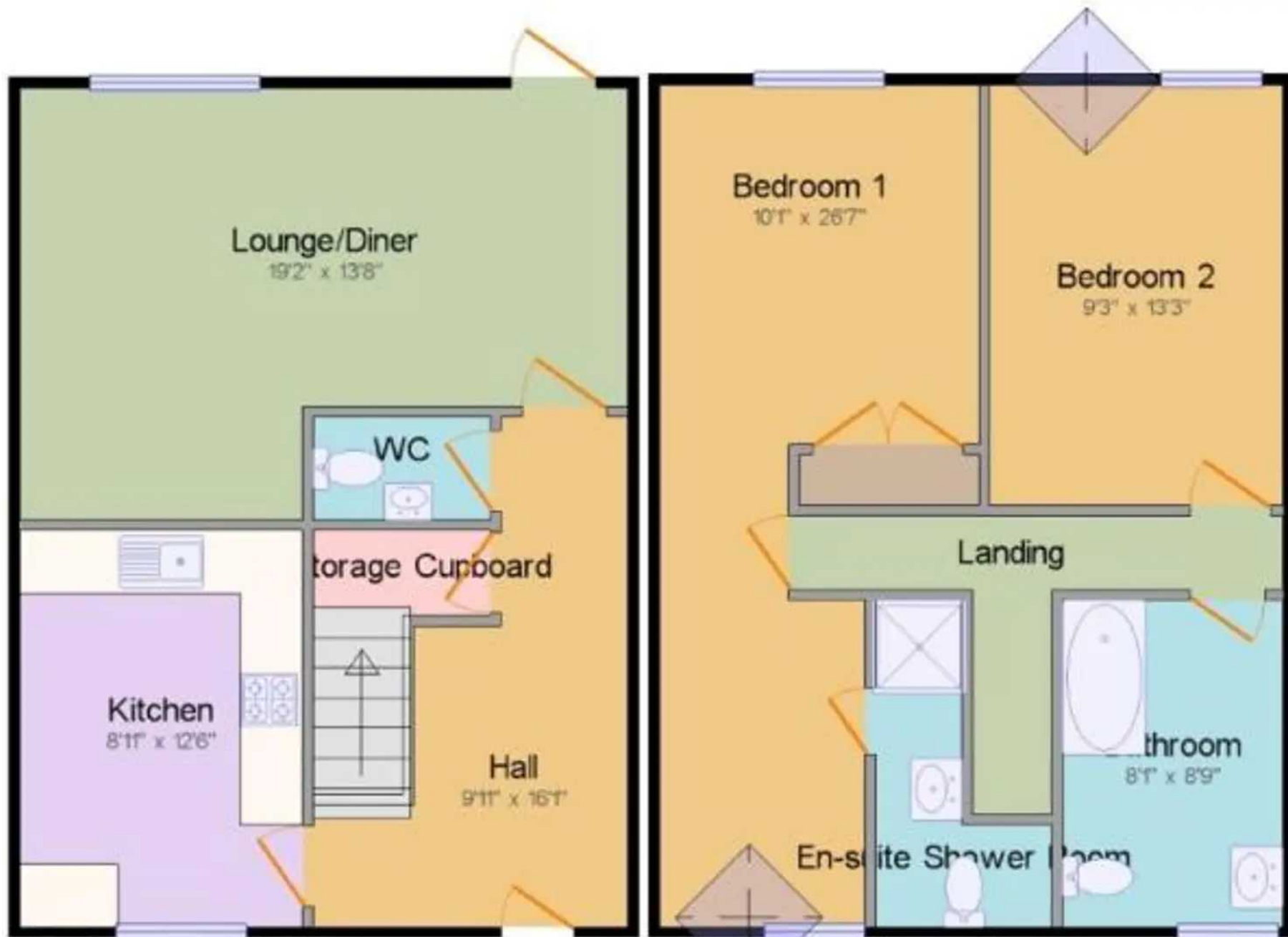
Step inside this unique property, and you will immediately be impressed by its features, boasting architectural details that tell stories of bygone eras.

Beyond the confines of this remarkable residence lies the neighborhood of The Millfields. Immerse yourself in the charm and beauty of the area as you traverse its tree-lined streets and admire the majestic 18th Century buildings that stand as a testament to its rich heritage. This conservation area offers a tranquil oasis in the heart of a vibrant city, where you can find solace in its lush green spaces and parks.

Rest assured that your safety and security are of utmost importance. With 24-hour security services in place, you can enjoy peace of mind knowing that you and your loved ones are well-protected within the confines of this prestigious 26 acre development.







Ground Floor

1st Floor



Atwell Martin

Atwell Martin, 65 Southside Street, Plymouth, PL1 2LA.

01752 202121

plymouthsales@atwell-martin.co.uk

plymouth.atwellmartin.co.uk/

Atwell Martin Plymouth endeavour to ensure the accuracy of property details produced and displayed. Please note that we have not tested any apparatus, equipment, fixtures, fittings or services and so cannot verify that they are connected, in working order or fit for purpose. It is imperative that the buyer of any property makes such checks, prior to purchase so as to satisfy themselves of the properties suitability for their purchase. .