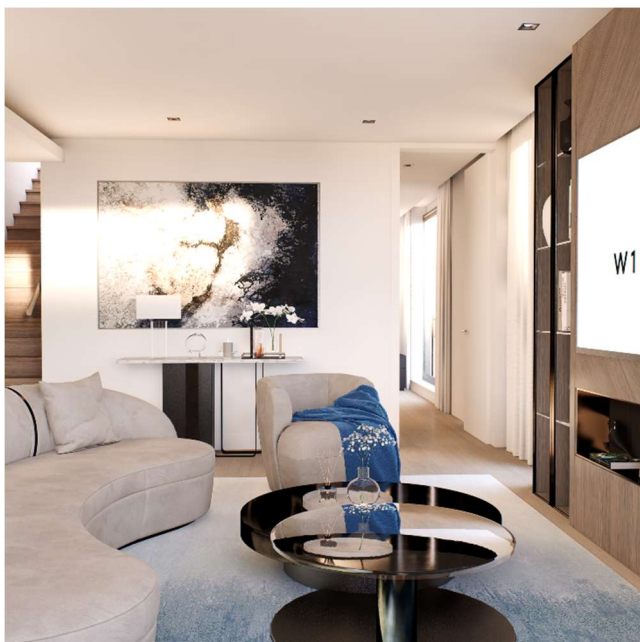
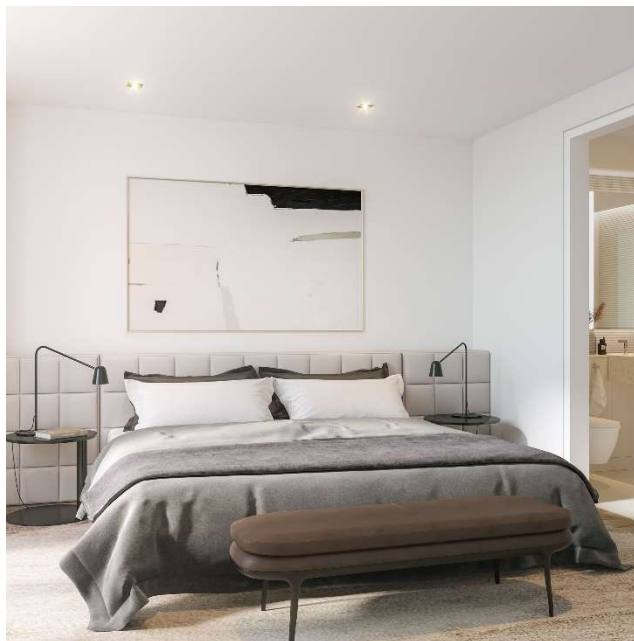




W1 Place, Great Portland Street
Selection of Apartments | Leasehold



CONTEMPORARY DESIGNED NEW APARTMENTS

A rare opportunity to live in one of Central London's finest apartments.

A selection of high specification and modern apartments between Marylebone and Fitzrovia, two vibrant neighbourhoods filled with striking architecture and an abundance of cafés, pubs, bars and eateries. Bookended by Oxford Street and Euston Road, Great Portland Street is at the very heart of these two historic districts, and indeed London itself.

Properties come in a variety of individual and splendidly considered layouts from 768 square feet to 2,418 square feet. Roof tops also enjoyed by the two penthouses (three bedroom).

LUNDINIOM
ESTATE AGENTS

96 Kensington High Street Kensington London W8 4SG

020 7549 4120

enquiries@lundiniom.com

Example floorplan from the development.
Individual unit floorplans available upon
request.

Apartment A101 2 bedroom

W1 PLACE
LONDON



Living/Kitchen/Dining	5.4m x 5.2m
Master Bedroom	5.8m x 4.5m
Master Bathroom	2.4m x 1.8m
Bedroom 2	4.2m x 4.0m
Guest Bathroom	2.4m x 1.4m
Total	89m ²
	958sqft
Terrace	9.4m ²
	101sqft



2

LUNDINIOM
ESTATE AGENTS

96 Kensington High Street Kensington London W8 4SG

020 7549 4120

enquiries@lundiniom.com

PROPERTY MISDESCRIPTIONS ACT 1991: The Agents has not tested any apparatus, equipment, fixtures and fittings, or services, so cannot verify that they are in working order or fit for the purpose. The buyer is advised to obtain verification from his or her Professional Buyer, References to the Tenure of the property are based on information supplied by the Vendor. The agents have not had sight of the title documents. The buyer is advised to obtain verification from their Solicitor. You are advised to check the availability of any property before travelling any distance to view.