



Hilltop House,
47A Wivelsfield Road, Haywards Heath, West Sussex, RH17 4EN

FREEHOLD

Guide Price
£500,000-£525,000





A brand-new 2 bedroom detached house hidden away up a long driveway on the southern side of town within an easy walk of the hospital, Sainsbury's local, the town centre, several schools and just 1.1 miles walk to the railway station

- Individual brand-new detached house in peaceful setting up a long driveway
- Built by a small local builder (ready for occupation in late summer 2023)
- 48' x 28' fully enclosed private garden
- 2 allocated parking spaces – front courtyard
- Imaginative design and quality fittings
- Fabulous open plan kitchen/dining/living area with bifold doors out to the rear courtyard and garden
- Kitchen with full range of integrated appliances
- 2 bedrooms, 2 bath/shower rooms and large study
- Within 150 yards of Sainsbury's Local
- 1.1 mile walk to the railway station
- Close to hospital
- Warden Park Secondary Academy School catchment
- 10 year Build Guarantee



The property is hidden away up a driveway which runs east of the Wivelsfield Road between No.s 45 and 49, just to the south of St James Lettings and the Sainsbury's Local store. The Princess Royal Hospital is within a 10 minute walk and there are several primary schools also within walking distance. Children from the side of town fall into the catchment area for Warden Park Secondary Academy School in neighbouring Cuckfield, for which they catch a school bus nearby. Some children go to Oathall Community College in Lindfield, which is closer. The railway station is 1.1 miles distant and offers fast commuter services to London and the south coast. The town has several large parks, excellent shopping and recreational facilities, a leisure centre, sports clubs and a 6th form college. By road, access to the major surrounding areas can be swiftly gained via the B2112, the A272 and A/M23 which lies about 6 miles to the west at Bolney or Warninglid.

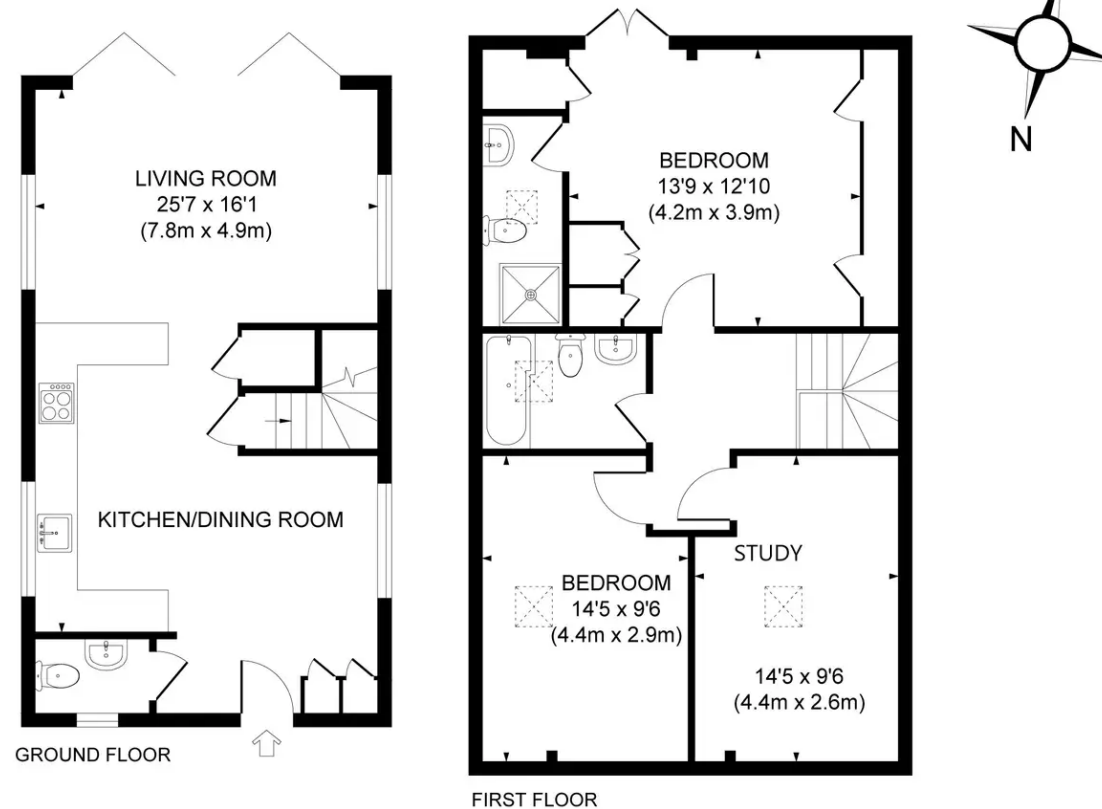
Distances (in approximate miles on foot/car/train)

Schools: St Wilfrid's Primary (0.7), St Joseph's RC Primary (0.8), Northlands Wood (1.0), Warden Park Primary Academy (0.9), Oathall Community College (1.5), Warden Park Secondary Academy in Cuckfield (2.5)

Haywards Heath Railway Station: (1.1) London Bridge/Victoria 45 mins, Gatwick Airport 15 mins, Brighton 20 mins



Approximate Gross Internal Area
1122 sq ft - 104.2 sq m



Mansell McTaggart Haywards Heath

7 Muster Green, Haywards Heath, West Sussex RH16 4AP

01444 456431

hh@mansellmctaggart.co.uk

www.mansellmctaggart.co.uk/branch/haywardsheath

Consumer Protection from Unfair Trading Regulations 2008 We have not tested any apparatus, equipment, fixtures, fittings or services and so cannot verify that they are in working order or fit for purpose. You are advised to obtain verification from your solicitor or surveyor. References to the tenure of a property are based on information supplied by the seller. We have not had sight of the title documents and a buyer is advised to obtain verification from their solicitor. Items shown in photographs are not included unless specifically mentioned within the sales particulars, but may be available by separate negotiation.