



Waltham Avenue, Blackpool

Offers Over £200,000

31 Waltham Avenue

Blackpool, Blackpool

Two bedroom true bungalow situated in a popular residential area just off St. Anne's Road close to local shops and amenities. Comprising of entrance vestibule, hallway, lounge, two bedrooms both with fitted wardrobes, four piece suite bathroom, kitchen, dining room, separate WC and conservatory. Externally there is an enclosed yard to the rear with lean-to and a well maintained corner plot garden. There is off road parking and a garage. The property is being sold with no chain.

Council Tax band: D

Tenure: Freehold

- Two bedroom True Bungalow
- Two Reception Rooms
- Conservatory
- Garage and off road parking
- No Chain





Other

Entrance vestibule

Hallway

13' 8" x 6' 9" (4.16m x 2.06m)

Hallway with storage cupboards

Lounge

14' 3" x 16' 8" (4.35m x 5.09m)

uPVC double glazed bay window, gas fire and radiator

Kitchen

9' 10" x 28' 1" (3m x 8.55m)

Matching range of base and eye level units and worktops, integrated oven and hob. UPVC double glazed window. Leading onto the dining room.

Dining Room

9' 10" x 28' 1" (3m x 8.55m)

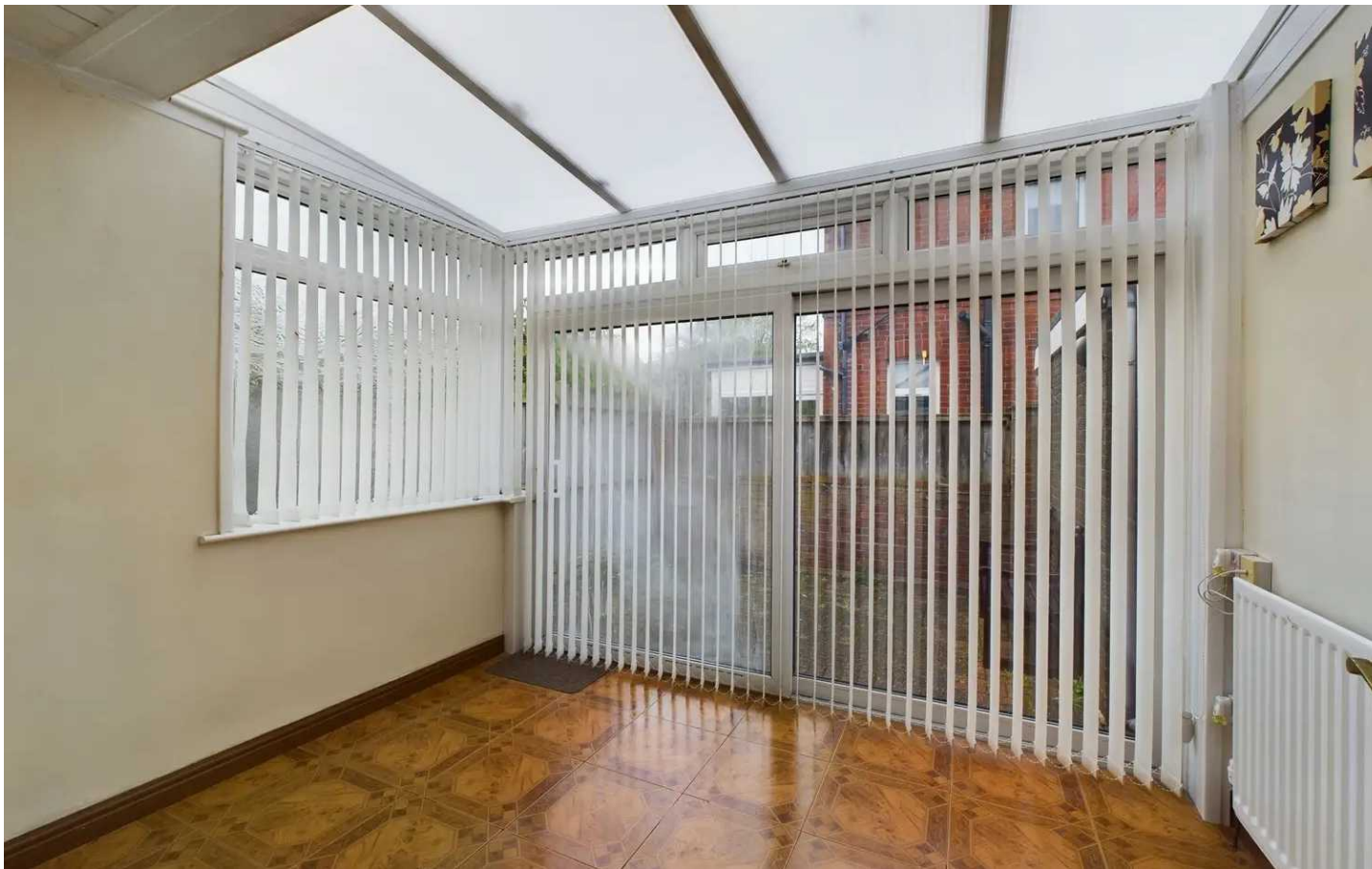
Open plan dining area leading off from the kitchen. Door leading onto the conservatory and downstairs WC.

Wc

6' 2" x 2' 6" (1.89m x 0.75m)

WC leading off from the dining room.





Conservatory

6' 11" x 10' 2" (2.1m x 3.11m)

Leading off from the dining room. UPVC double glazed sliding patio doors.

Bedroom

15' 7" x 9' 11" (4.74m x 3.03m)

Bedroom 1 with fitted wardrobes and storage units, uPVC double glazed window and radiators

Bedroom 2

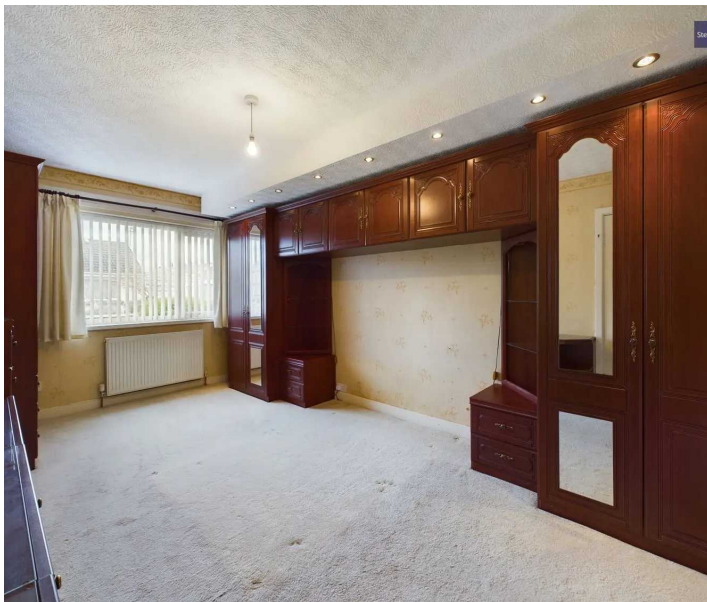
9' 8" x 10' 6" (2.94m x 3.2m)

Bedroom 2 to the front with fitted wardrobes, uPVC double glazed window and radiator

Bathroom

7' 10" x 9' 10" (2.39m x 3m)

Four piece suite bathroom. UPVC double glazed window and radiator





GARDEN

Corner plot garden with a yard and lean-to to the side/rear of the property.

GARAGE

Single Garage

OFF ROAD

1 Parking Space







Stephen Tew Estate Agents

Stephen Tew Estate Agents, 132 Highfield Road - FY4 2HH

01253 401111

info@stephentew.co.uk

www.stephentew.co.uk

