



1033 FINCHLEY ROAD

Temple Fortune, NW11 7ES

Corner Retail Opportunity To Suit a Variety of E Use Class Occupiers.

669 SQ FT

FOREST
REAL ESTATE

Summary

Available Size	669 sq ft
Rent	£25,000 per annum
Rates Payable	£9,106.75 per annum
Service Charge	N/A
VAT	Not applicable
EPC Rating	C (69)

Key Features

- E use class
- Open plan
- Dual aspect natural light
- Comfort cooling
- Private Kitchenette
- Within a 10 minute walk from Golders Green Station (Northern Line)
- Available now
- 38 ft return frontage

Description

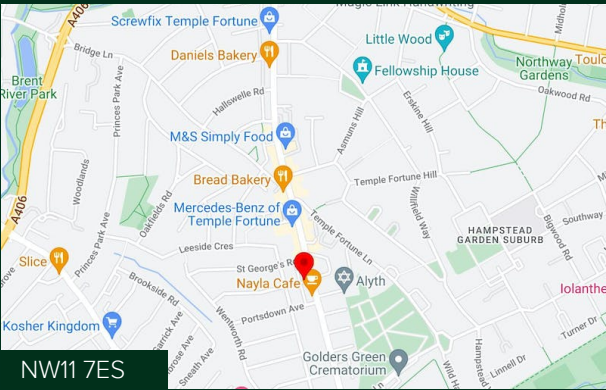
This end of terrace E-class property is largely open plan with kitchenette and WC.

The property benefits from a 38 ft return frontage, comfort cooling and is available now.

Location

This property is located within a 10 minute walk from Golders Green Station providing great access in to Central London via the Northern Line.

Temple Fortune benefits from a wide variety of amenities ranging from nationwide brands such as Waitrose and M&S, as well as the very popular Bread Bakery only a 5 minute walk down the road.



Viewing & Further Information

Cormac Sears

020 3355 1555 | 07850 399 627
cormac@forestrealestate.co.uk

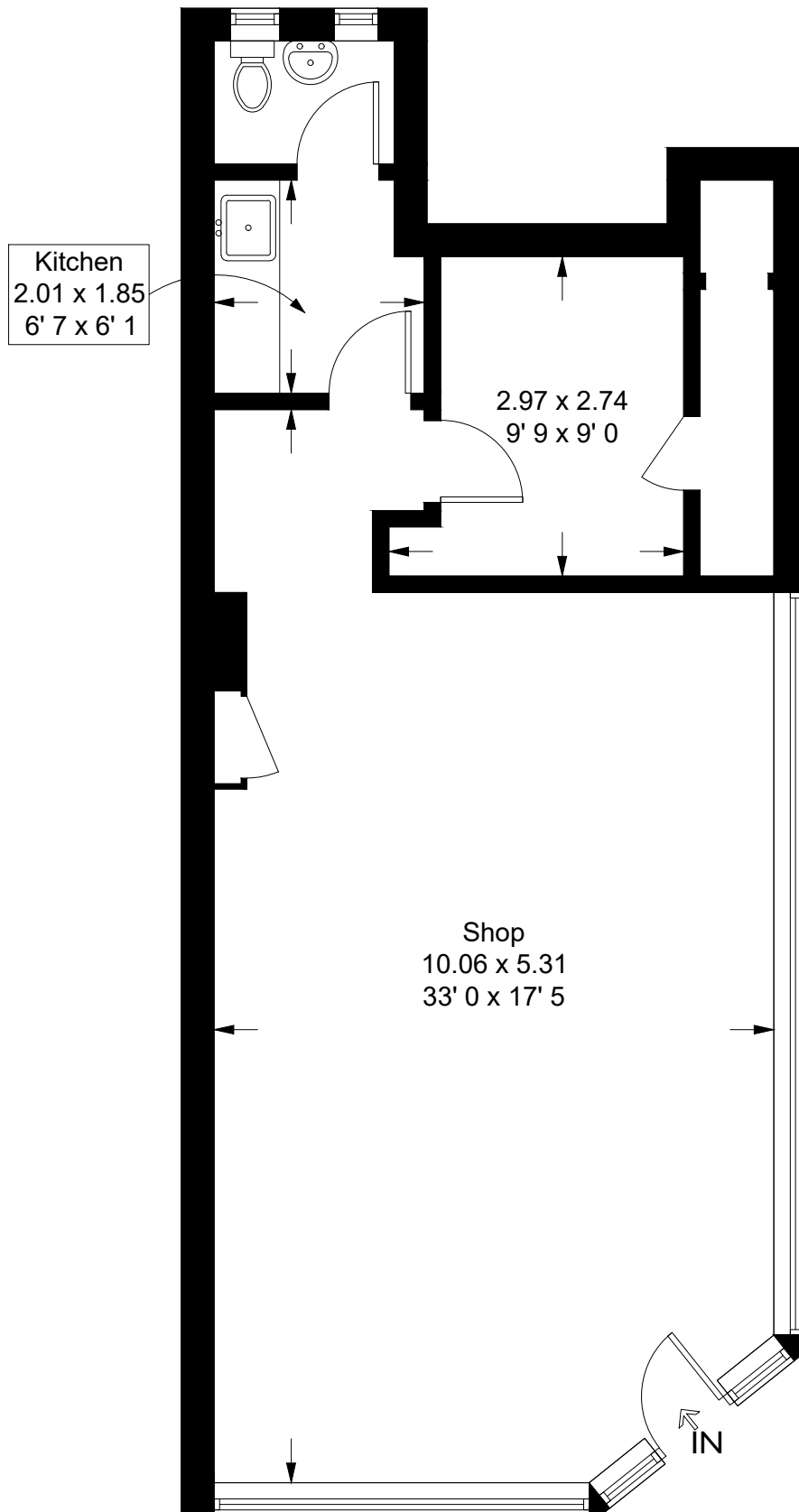
CONNECT WITH US
1 Bridge Lane, London, NW11 0EA
020 3355 1555
info@forestrealestate.co.uk
www.forestrealestate.co.uk

F O R E S T
REAL ESTATE

The above information contained within this brochure is subject to contract. These particulars are for general information only and do not constitute any part of an offer or contract. All statements contained therein are made without responsibility on the part of the vendors or lessors and are not to be relied upon as statement or representation of fact. Intending purchasers or lessees must satisfy themselves, by inspection, or otherwise, as to the correctness of each of the statements of dimensions contained in these particulars. Generated on 18/10/2023

Finchley Road

Approximate Gross Internal Area = 669 sq ft / 62.2 sq m



This plan is not to scale and must be used as layout guidance only. All measurements and areas are approximate and should not be relied upon to provide accurate information. This plan must not be relied upon when making property valuations, design considerations or any other such relevant decisions. We accept no responsibility or liability (whether in contract, tort or otherwise) in relation to any loss whatsoever arising from or in connection with any use of this plan or the adequacy, accuracy or completeness of it or any information within it.