



LAWRENCE RAND

Amber Court, 2 Arla Place

£315,000



Amber Court

Ruislip

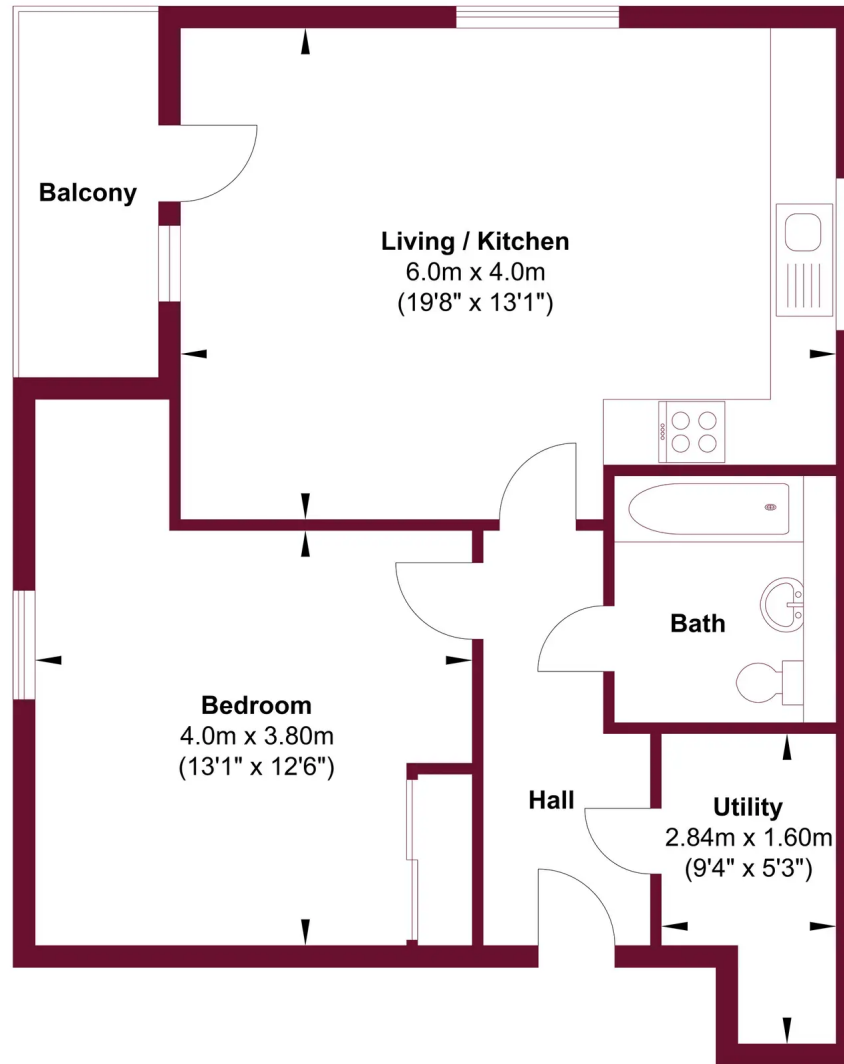
A stylish top floor one bedroom apartment situated in the popular Arla Place development. The property has a balcony, good size accommodation with a lovely contemporary feel, residents parking and is literally minutes from the local amenities - including the station. Council Tax band: C

Tenure: Leasehold

- Stunning top floor apartment
- Sought after development
- Close to station & amenities
- Balcony
- Open plan living
- Double bedroom
- 118 year lease







This floor plan is for illustrative purposes and layout guidance only. It is not drawn to scale. Dimensions should not be used for carpet or flooring sizes and are not intended to form part of any contract.



Lawrence Rand

Lawrence Rand, 106 Victoria Road - HA4 0AL

01895 632211

Info@lawrence-rand.co.uk

www.lawrence-rand.co.uk/



LAWRENCE RAND