



The Old Methodist Chapel  
Norwich Road | Scoulton | Norfolk | NR9 4NR

# PREACH TO THE CONVERTED



This exquisitely converted historical building just oozes history. It offers a balance of bygone age with contemporary elegance all coming together to provide a welcoming luxurious home. The outside space compliments the inside, all set in the beautifully unspoilt Norfolk countryside yet close to amenities, this home has the perfect blend of the past and the modern day.







# KEY FEATURES

- A Stunning Converted Methodist Chapel in the Village of Scoulton
- Three Bedrooms; Three En-Suite Shower Rooms
- The Principal Bedroom benefits from a Balcony with Field Views
- Open Plan Kitchen/Dining and Living Room with Spiral Staircase
- Separate Utility Room and Ground Floor WC
- Sitting Room with Floating Staircase and Bi-Fold Doors to the Garden
- Landscaped Gardens with Mediterranean Style Sheltered Terrace and Feature Pond
- Garage and Cart Lodge with Plenty of Parking
- The Accommodation extends to 1,925sq.ft
- Energy Rating: E

The chapel blends the old and the new seamlessly: the vaulted ceilings provide a serene, calm atmosphere as does the original flooring, with 9 beautifully worn foundation stones promoting thoughts of those who have walked there before. This little piece of history contrasts so well with the renovation's contemporary open plan design and carefully decorated interior, sensitive to its build towards the end of the Edwardian era.

## Ancient and Modern - The Restoration

The Old Methodist Chapel reflects this period in history, sometimes known as the 'golden age', as a time of great prosperity and luxurious parties. The current owners have sympathetically converted this building, meticulously handpicking each fixture and fitting to reflect the aura, scale and shape of the chapel. The interior design took inspiration from the chapel's original arched windows with the curved theme extending to the spiral staircase (reclaimed from a train station in Liverpool), the curved island in the kitchen and crescent shaped sofa in the living area, all contributing to the harmonious flow of this distinctive home. From the cornices and mouldings to door dressings and gardens the attention to detail is apparent throughout making this a home full of character but totally transformed towards modern living.

## The Golden Age

On entering, you will be struck by sheer opulence, style and creativity. With extra height in ceilings, yet the warmth of wooden flooring this fantastic family space with kitchen, dining and relaxing area provides flexibility of use and a great sociable hub. It feels instantly like home yet has the sensation of glamour all around. The kitchen has a separate thoughtfully positioned utility room next to the entrance lobby allowing a practical area for those muddy boots and paws from long walks in the surrounding countryside.







# KEY FEATURES

This home has the huge bonus of a separate formal sitting room, beautifully styled and warm in winter with underfloor heating. Doors lead to the Mediterranean styled sheltered terrace where fabulous parties can just spill out onto the patio. Welcoming family and friends has been so easy here with plenty of space to stay over too. The spiral staircase from the family area leads to two double guest bedrooms, both with elegant ensuite bathrooms. The most fascinating feature of this home is the floating staircase from the formal sitting room, leading to one of the current owners favourite parts of the house, a glorious balcony accessed from bi-folds in the principal bedroom. This stunning space grants spectacular views of peaceful Norfolk countryside. This luxurious bedroom also has an equally glamorous ensuite.

## A Home For All Seasons

The changing of the seasons is witnessed with such clarity here. From looking out on to the Spring meadows from the principal bedroom balcony, with frolicking lambs for entertainment or relaxing in Summer in the Mediterranean walled courtyard this oasis offers shelter from sun and wind surrounded by bamboo and olive trees and can be used in the cooler months too. This half an acre plot has been thoughtfully landscaped to include shingle driveway with plenty of parking plus a garage and cart lodge. The secluded landscaped lawns are complimented with traditional garden roses from local rose expert Peter Beales. An enchanting Folly once used at the Chelsea Flower show and the Indonesian tree root in the pretty pond add to interest here, making sure there is an area for entertaining, an area to find privacy and peace as well room for children and dogs to run and explore.

## A Lovely Location

Sculpton is a small rural village with village hall and a local church and within just two miles has the welcoming village of Hingham as its neighbour and here you will find everything needed for village life. With the necessities of doctors and dentist in Hingham, and added ease of regular bus routes running from Sculpton village to Watton and Wymondham towns plus Norwich city centre as well as the Norfolk & Norwich University hospital you have a safe haven here. Hingham also provides a supermarket, independent bakery, a butchers, chemist, hairdressers, cafes and bistro as well as the wonderful White Hart pub. For leisure time Hingham offers an active sports and social club as well as a local library. Hingham also offers its own historical context with Abraham Lincoln having relatives here!

























































# INFORMATION

---



## On The Doorstep

Hingham is a lovely Georgian market town in rural Norfolk. It has beautiful Georgian buildings surrounding its charming old market place, and in other streets, which is why it is being conserved. Hingham is small enough for people to know each other but large enough to have a lively and active community, and its facilities and interesting shops have the special character of a small market town. The larger market towns of Wymondham and Attleborough are close by and provide a larger range of amenities. Scoulton is also close to Watton and within easy reach of the main roads into London.

## How Far Is It To?

The cathedral city of Norwich can be found to the east with its main line rail link to London Liverpool Street and its international airport. The Chapelfield development has transformed Norwich's shopping district into one of the largest retail centres in the country. The world renowned Norfolk Broads can be found to the North East with its many waterways and array of wildlife. The North Norfolk coast with its quaint villages and sandy beaches is approximately one hour's drive whilst Thetford Forest with its bike and nature trails can be found closer to home to the south of Hingham.

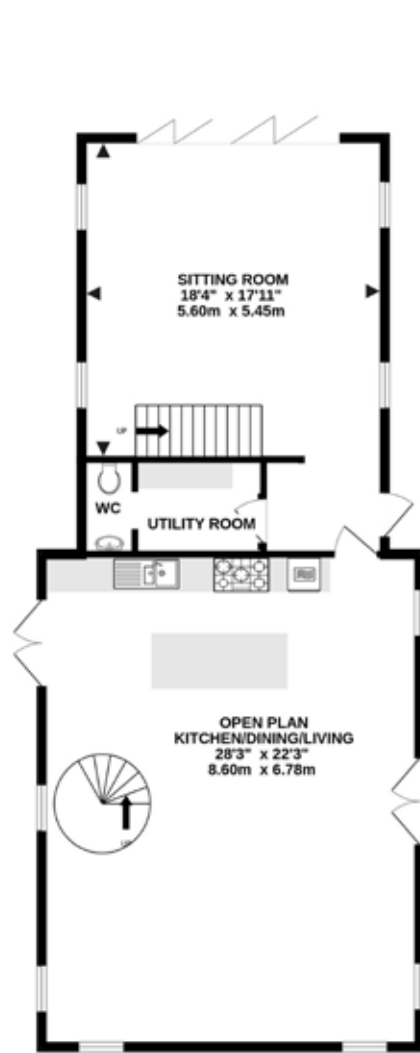
## Directions

Leave Norwich heading west on the B1108 Watton Road heading towards Watton. This road then becomes the Norwich Road. Proceed through Hingham and continue towards the village of Scoulton, where The Old Methodist Chapel will be found on the right hand side clearly signposted with a Fine and Country For Sale Board.

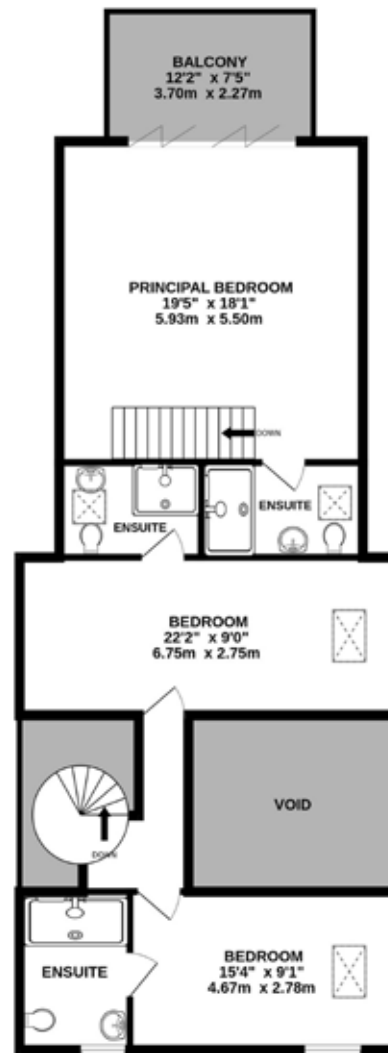
## Services, District Council and Tenure

Gas Central Heating, Mains Water, Drainage via Treatment Plant  
Breckland District Council – Council Tax Band A  
Freehold

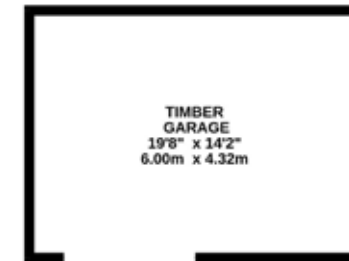




**GROUND FLOOR**  
1053 sq.ft. (97.8 sq.m.) approx.



**1ST FLOOR**  
872 sq.ft. (81.0 sq.m.) approx.

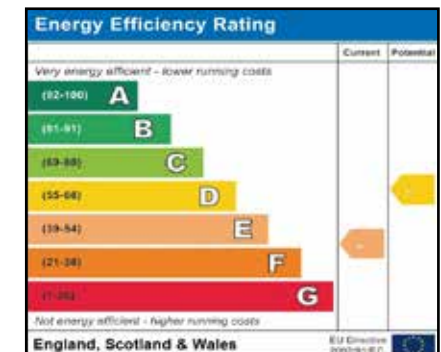


**OUTBUILDING**  
279 sq.ft. (25.9 sq.m.) approx.

**TOTAL FLOOR AREA : 2204 sq.ft. (204.7 sq.m.) approx.**

Whilst every attempt has been made to ensure the accuracy of the floor plan contained here, all measurements are approximate and no responsibility is taken for any error, omission or mis-statement. This plan is for illustrative purposes only. [www.norfolkpropertyphotos.co.uk](http://www.norfolkpropertyphotos.co.uk)  
Made with Metropix ©2023

Agents notes: All measurements are approximate and for general guidance only and whilst every attempt has been made to ensure accuracy, they must not be relied on. The fixtures, fittings and appliances referred to have not been tested and therefore no guarantee can be given that they are in working order. Internal photographs are reproduced for general information and it must not be inferred that any item shown is included with the property. For a free valuation, contact the numbers listed on the brochure.







# FINE & COUNTRY

---

Fine & Country is a global network of estate agencies specialising in the marketing, sale and rental of luxury residential property. With offices in the UK, Australia, Egypt, France, Hungary, Italy, Malta, Namibia, Portugal, South Africa, Spain, The Channel Islands, UAE, USA and West Africa we combine the widespread exposure of the international marketplace with the local expertise and knowledge of carefully selected independent property professionals.

Fine & Country appreciates the most exclusive properties require a more compelling, sophisticated and intelligent presentation - leading to a common, yet uniquely exercised and successful strategy emphasising the lifestyle qualities of the property.

This unique approach to luxury homes marketing delivers high quality, intelligent and creative concepts for property promotion combined with the latest technology and marketing techniques.

We understand moving home is one of the most important decisions you make; your home is both a financial and emotional investment. With Fine & Country you benefit from the local knowledge, experience, expertise and contacts of a well trained, educated and courteous team of professionals, working to make the sale or purchase of your property as stress free as possible.

THE FINE & COUNTRY  
FOUNDATION

Fine & Country Foundation, charity no. 1160989

Striving to relieve homelessness.

To find out more please visit [fineandcountry.com/uk/foundation](https://fineandcountry.com/uk/foundation)



follow Fine & Country Norwich on



Fine & Country Norwich  
12-14 Queen Street, Norwich, Norfolk, NR2 4SQ  
01603 221888 | [norwich@fineandcountry.com](mailto:norwich@fineandcountry.com)

