

Compton

London

52 Kingsway Place
EC1R 0LU

Self-contained office for rent
providing open plan space
arranged over ground and
mezzanine floors in a converted
Grade II listed school.

For Rent

815 ft²

020 7101 2020
compton.london



Compton

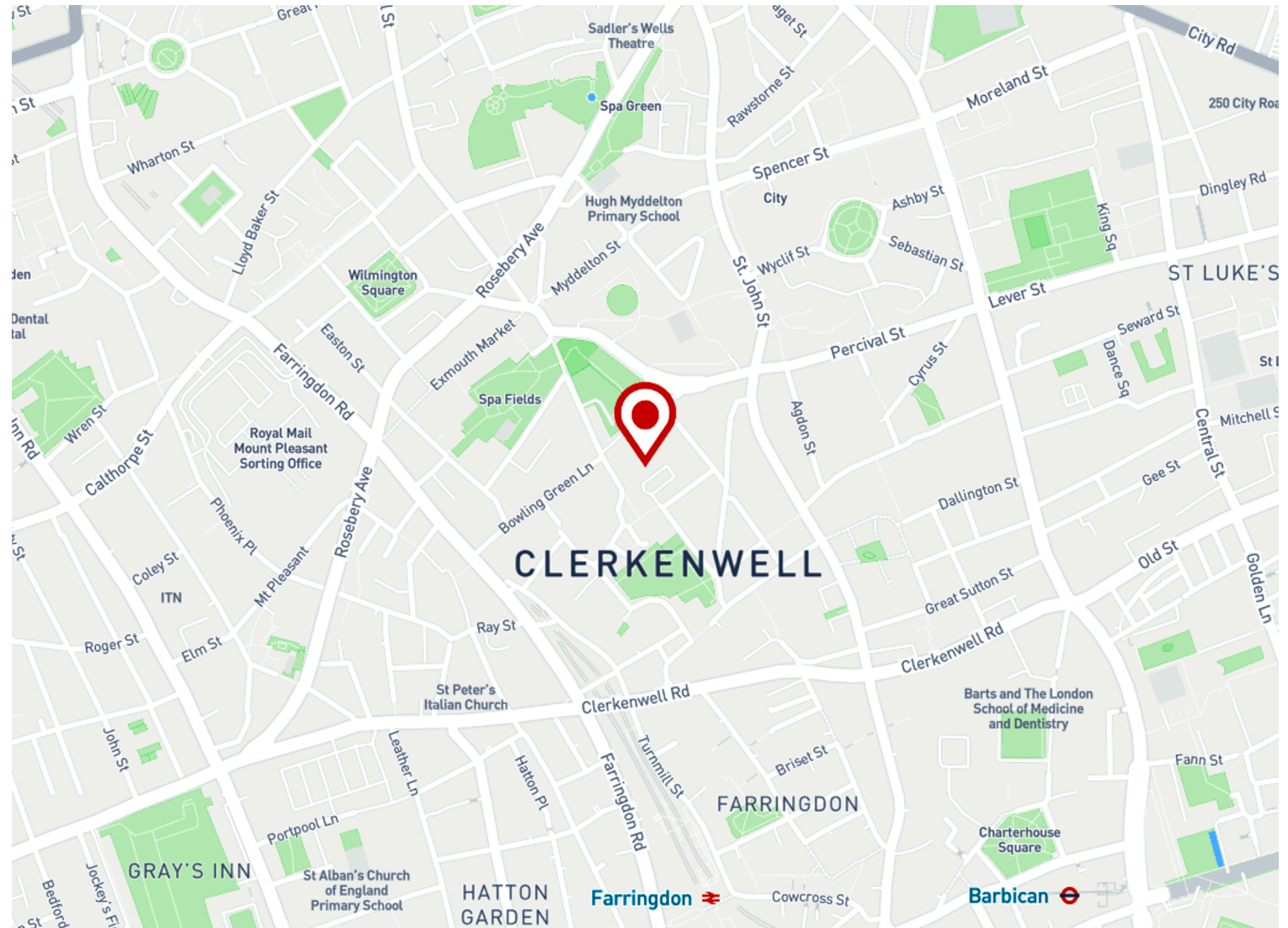
London

52 Kingsway Place
EC1R 0LU

Self-contained office for rent
providing open plan space
arranged over ground and
mezzanine floors in a converted
Grade II listed school.

For Rent

815 ft²



Location

Kingsway Place is a charming gated development in the heart of Clerkenwell. The property is ideally located to the north of Clerkenwell Green and south of Exmouth Market. This historic part of Clerkenwell benefits from a huge variety of cafés, pubs, bars and restaurants as well as the famous street food market on Exmouth Market. Transport links are excellent with quick and easy access to both Farringdon and Angel stations.

Compton

London

52 Kingsway Place
EC1R 0LU

Self-contained office for rent
providing open plan space
arranged over ground and
mezzanine floors in a converted
Grade II listed school.

For Rent

815 ft²

020 7101 2020
compton.london



Main Space

Compton

London

52 Kingsway Place
EC1R 0LU

Self-contained office for rent
providing open plan space
arranged over ground and
mezzanine floors in a converted
Grade II listed school.

For Rent

815 ft²



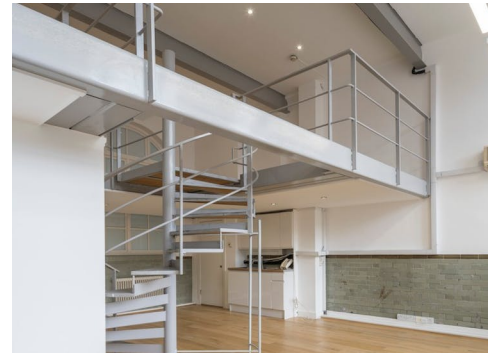
Compton

London

52 Kingsway Place
EC1R 0LU

Self-contained office for rent
providing open plan space
arranged over ground and
mezzanine floors in a converted
Grade II listed school.

For Rent
815 ft²



Compton

London

52 Kingsway Place
EC1R 0LU

Self-contained office for rent providing open plan space arranged over ground and mezzanine floors in a converted Grade II listed school.

For Rent

815 ft²

Amenities

- Self-contained office
- Data & power cabling installed
- Generous floor to ceiling heights
- Excellent natural daylight
- Central heating
- Comfort cooling
- Fitted kitchenette
- Use of walled communal garden
- Video entry phone system

Description

Kingsway Place is an impressive, converted Grade II listed school accommodating both office and residential spaces.

The space is a self-contained office providing an open plan office arranged over ground and mezzanine floors with large windows and a fitted kitchenette.

The development is gated with onsite security, a large communal walled garden and shared bike racks. There is also a car park where electrical charging points are in the process of being installed.

London

52 Kingsway Place
EC1R 0LU

Self-contained office for rent
providing open plan space
arranged over ground and
mezzanine floors in a converted
Grade II listed school.

For Rent

815 ft²

Content

View on Website



Compton

London

52 Kingsway Place
EC1R 0LU

Self-contained office for rent
providing open plan space
arranged over ground and
mezzanine floors in a converted
Grade II listed school.

For Rent

815 ft²

Floor Areas & Outgoings

The accommodation comprises the following areas:

Name	sq ft	Rent (sq ft)	Rates Payable (sq ft)	Service Charge (sq ft)	Total /sq ft	Total month	Total year	Availability
Ground - & Mezzanine	815	£39.50	£12.09	£6.97	£58.56	£3,977.20	£47,726.40	Under Offer
Total	815	£39.50	£12.09	£6.97	£58.56	£3,977.20	£47,726.40	

Compton

Contact Us

All appointments to view must
be arranged via sole agents,
Compton, through —

Alex Sugar
as@compton.london
07585 793 379

Elliott Stern
es@compton.london
07834 918700

Jake Kinsler
jk@compton.london
07840 638668



020 7101 2020
compton.london

Compton gives notice that these particulars are set out as a general outline only for the guidance of intending Purchasers or Lessees and do not constitute any part of an offer or contract. Details are given without any responsibility and any intending Purchasers, Lessees or Third Party should not rely on them as statements or representations of fact, but must satisfy themselves by inspection or otherwise as to the correctness of each of them. No person employed or engaged by Compton has any authority to make any representation or warranty whatsoever in relation to this property. Compton is the licensed trading name of Compton RE Disposals Limited. Company registered in England & Wales no. Registered office: 47 St John's Square, Clerkenwell, London, EC1V 4JJ
Generated on 20/10/2023