



Shelley Close, ABINGDON

Abingdon

Simpsons

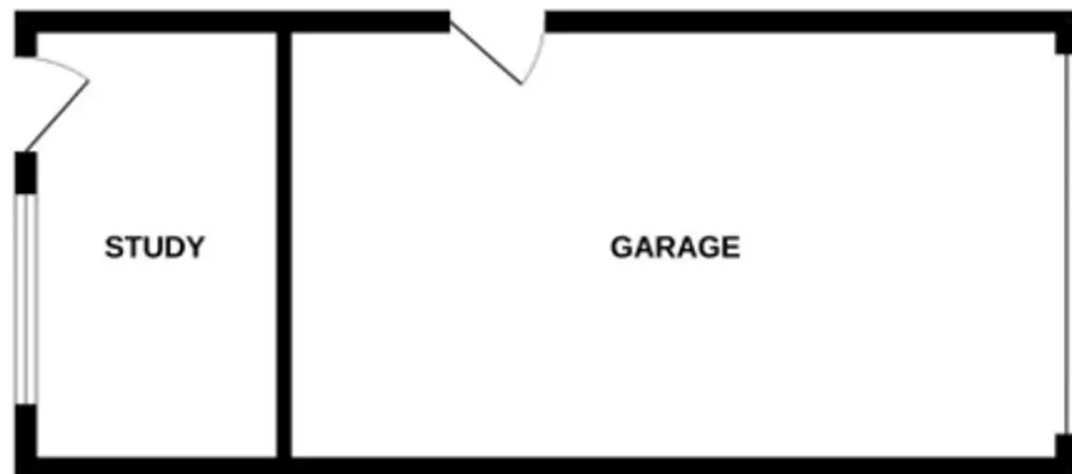
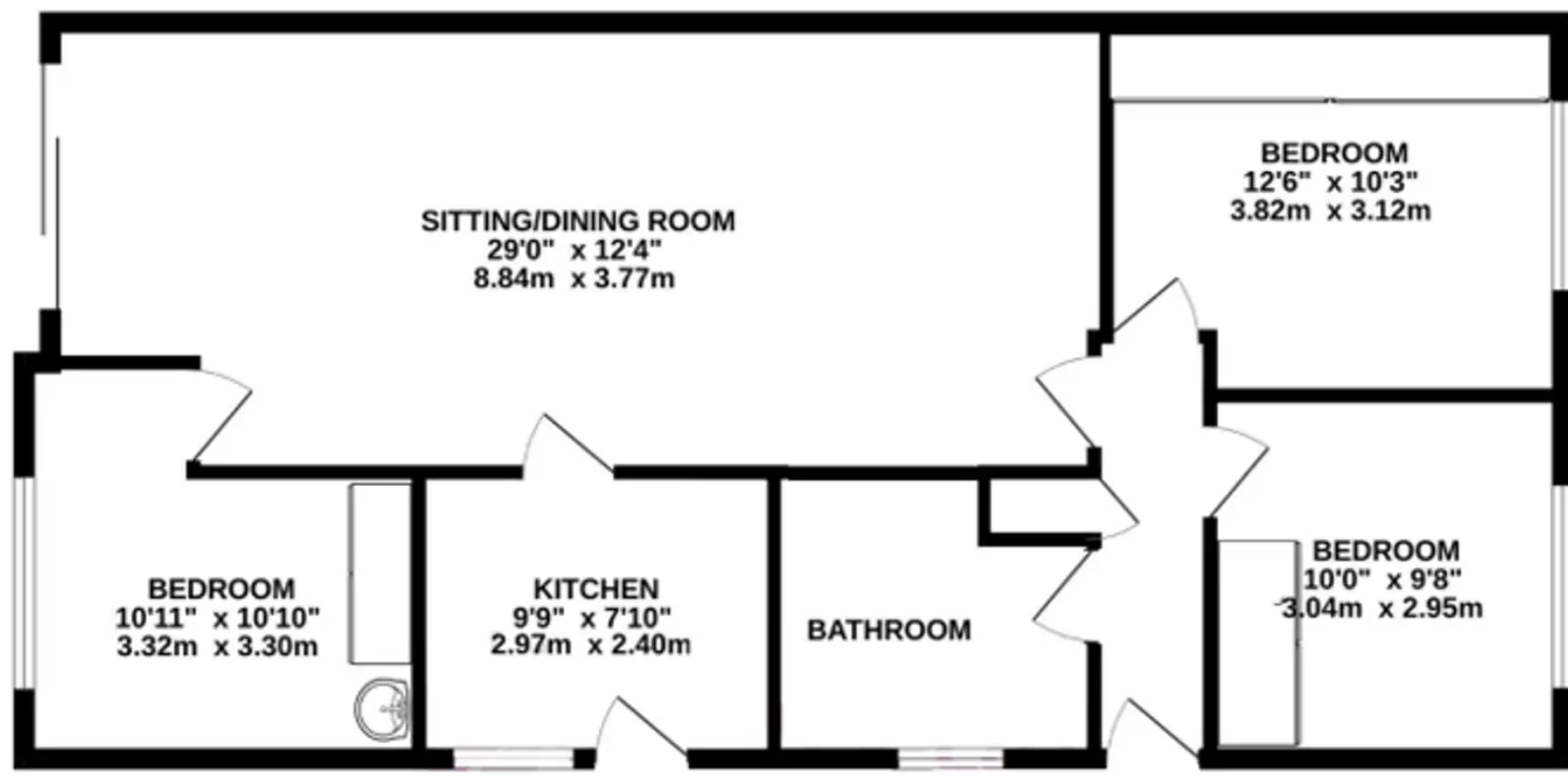
The Proactive Agent

£375,000



SCAN THE
QR CODE
FOR DETAILS





Shelley Close

ABINGDON, Abingdon

A well proportioned three bedroom bungalow within walking of numerous amenities including The Co-Op, The Barns Coffee shop on Northcourt Road and bus stops serving Abingdon and Oxford.

Council Tax band: D

Tenure: Freehold

- North/West facing rear garden, laid to lawn with a deck patio.
- Gas central heating.
- Established development ideally situated within reach of useful local amenities.
- No onward chain.
- Extended accommodation to the rear creating additional space, ideal for a downsizer.
- Three bedrooms, two with built in wardrobes.



SCAN THE
QR CODE
TO BOOK
YOUR VIEWING



