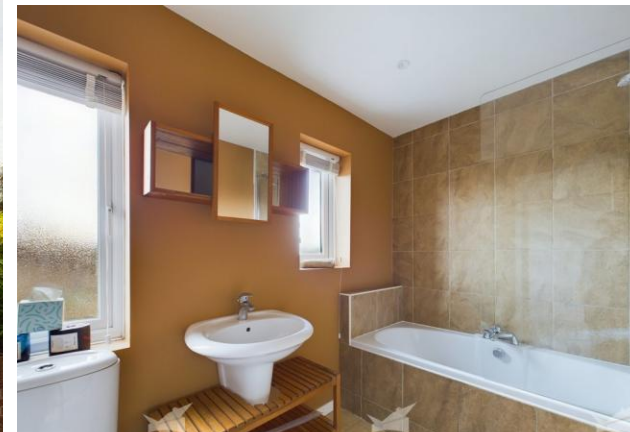


ON HOLD



Copley Crescent, Scawsby
£875 pcm


MARTIN & CO



Copley Crescent, Scawsby

Semi-Detached House,
3 bedroom, 1 bathroom

£875 pcm

Date available: 3rd July 2023

Deposit: £1,009.61

Unfurnished

Council Tax band: A

- Three Bedrooms.
- Semi-Detached.
- Popular Location.
- New Carpets.
- Off Road Parking.
- Conservatory.
- Modern Kitchen.



KITCHEN/DINER 17' 8" x 11' 7" (5.38m x 3.53m) With a range of grey wall and base units, complimented with black worktops. Also benefits from Integrated Induction Hob, Oven, Microwave and Extractor Fan. There is also plenty of space for a Dining Table.

LIVING ROOM 11' 2" x 13' 2" (3.4m x 4.01m) A spacious Living Room with Feature Fireplace and wood effect flooring. Double doors leading to the Conservatory.

CONSERVATORY 12' 7" x 11' 6" (3.84m x 3.51m) A light and bright space with patio doors leading to the Rear Garden. Perfect for entertaining!

UTILITY ROOM 7' 8" x 7' 8" (2.34m x 2.34m) A useful

utility space with plumbing for a Washing Machine.

BEDROOM 11' 2" x 9' 11" (3.4m x 3.02m) A double bedroom situated on the first floor.

BEDROOM 8' 6" x 13' 1" (2.59m x 3.99m) A second double bedroom situated on the first floor.

BEDROOM 8' 10" x 9' 1" (2.69m x 2.77m) A single bedroom with fitted wardrobes.

BATHROOM 5' 11" x 9' 2" (1.8m x 2.79m) A modern family bathroom fitted with a white three piece suite and over bath shower.



%epcGraph_c_1_544%



Martin & Co Doncaster

38 Hall Gate • Doncaster • DN1 3NR
T: 01302 343 494 • E: doncaster@martinco.com

01302 343 494

<http://www.martinco.com>



Accuracy: References to the Tenure of a Property are based on information supplied by the Seller. The Agent has not had sight of the title documents. A Buyer is advised to obtain verification from their Solicitor. Items shown in photographs including but not limited to carpets, fixtures and fittings are not included unless specifically mentioned within the sales particulars. They may however be available by separate negotiation. Buyers must check the availability of any property and make an appointment to view before embarking on any journey to see a property. No person in the employment of the agent has any authority to make any representation about the property, and accordingly any information given is entirely without responsibility on the part of the agents, sellers(s) or lessors(s). Any property particulars are not an offer or contract, nor form part of one. **Sonic / Laser Tape:** Measurements taken using a sonic / laser tape measure may be subject to a small margin of error. **All Measurements:** All Measurements are Approximate. **Services Not tested:** The Agent has not tested any apparatus, equipment, fixtures and fittings or services and so cannot verify that they are in working order or fit for the purpose. A Buyer is advised to obtain verification from their Solicitor or Surveyor.