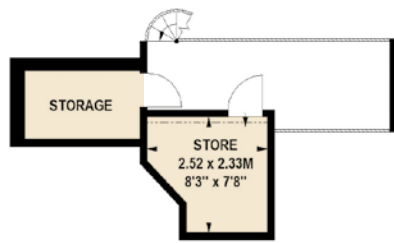


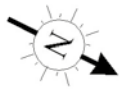
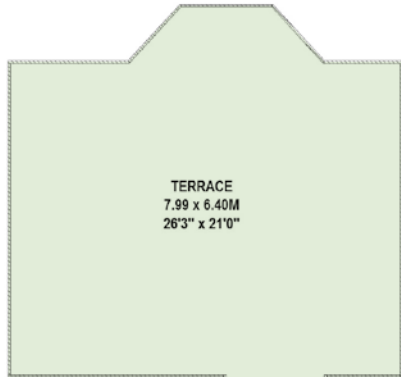


# ONSLOW GARDENS

CHELSEA SW7

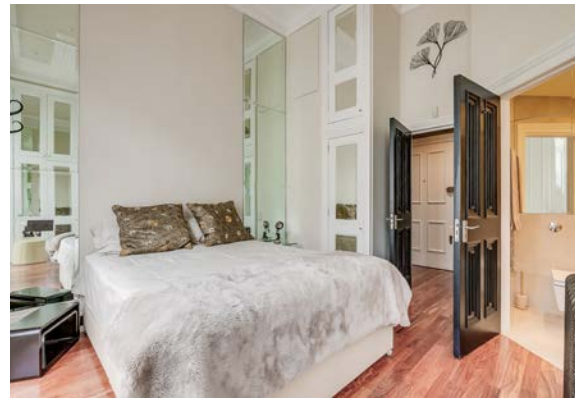
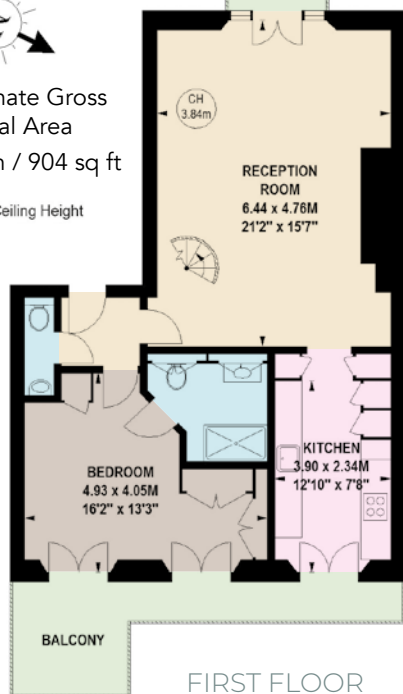


MEZZANINE



Approximate Gross  
Internal Area  
83.98 sq m / 904 sq ft

Key: CH - Ceiling Height

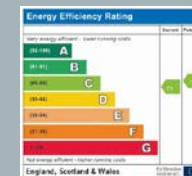


An exceptional first floor apartment boasting an impressive reception room with high ceilings and wooden floors, leading to a vast terrace overlooking the manicured communal garden which access is available to by separate negotiation. The apartment offers elegant entertaining space both from within the flat and on the private terrace. Having been recently redecorated the flat offers a contemporary finish throughout with features such as a mezzanine level space and ample storage throughout.

The area is also renowned for its wonderful choice of boutique shops and fashionable bars and restaurants. The additional amenities of South Kensington and Chelsea are also easily accessible, as is the A4 providing speedy access to the west and Heathrow via the M4.

#### FEATURES

- Bedroom with Ensuite Bathroom
- Reception Room
- Kitchen
- Guest WC
- Large Terrace
- Balcony Off Bedroom
- Access to Communal Gardens  
By Separate Negotiation



OnTheMarket.com



Price £1,850,000

Tenure Share of Freehold with  
991 Years Remaining

Service Charge Approx £6,464 includes  
Contribution To The Sinking Fund

**NVP**  
NICOLAS VAN PATRICK

6-8 MONTPELIER STREET,  
LONDON SW7 1EZ  
SALES | +44 (0)20 7581 8277  
LETTINGS | +44 (0)20 7590 1200  
info@nicolasvanpatrick.com  
www.nicolasvanpatrick.com

These details have been prepared for general guidance only and should not be relied upon by prospective purchaser/ tenants who before proceeding must check and otherwise satisfy themselves as to the property and the nature, state and availability of any facility or service.