



20 Lowrey Terrace

Blackpool, FY1 6DR

- **GROUND FLOOR 1 BED FLAT**
- **CLOSE TO PROMENADE / LOCAL SHOPS**
- **OVER 35 YRS ONLY – NO PETS**
- **MOVE IN COSTS £933.00**

£100 pw

EPC Rating '3'





Property Description

LOUNGE

15' 07" x 11' 54" (4.75m x 4.72m) FEATURE BAY WINDOW, LAMINATE FLOORING, NEWLY DECORATED, GAS RADIATOR

BEDROOM

9' 16" x 16' 28" (3.15m x 5.59m) DOUBLE GLAZED WINDOW, GAS RADIATOR, LAMINATE FLOORING, FITTED ROBE

KITCHEN/DINER

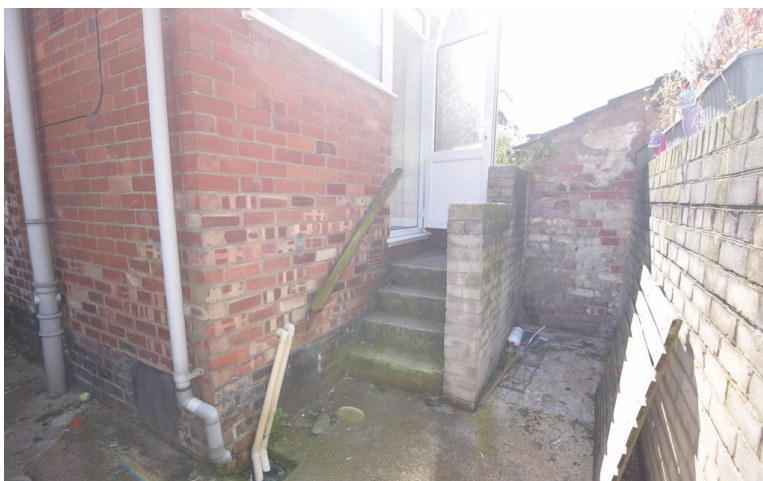
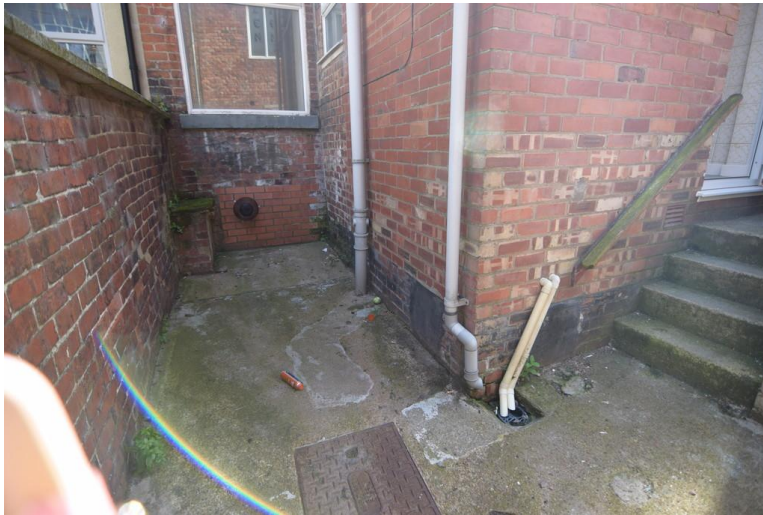
11' 13" x 8' 80" (3.68m x 4.47m) RANGE OF WALL AND BASE UNITS, FREESTANDING ELECTRIC COOKER, PLUMBED FOR WASHING MACHINE, DOUBLE GLAZED WINDOW





SHOWER ROOM

4' 93" x 5' 07" (3.58m x 1.7m) SHOWER ROOM WITH SHOWER CUBICLE, ELECTRIC SHOWER, WC AND WASH HAND BASIN





21 Counce Street
 Blackpool
 Lancashire
 FY1 3LA

www.moveholmes.co.uk
 01253 928200
enquiries@moveholmes.co.uk

Agents Note: Whilst every care has been taken to prepare these sales particulars, they are for guidance purposes only. All measurements are approximate and are for general guidance purposes only and whilst every care has been taken to ensure their accuracy, they should not be relied upon and potential buyers are advised to recheck the measurements