

JOHN CHILDS WAY

Bungay NR35 1SE

Freehold | Energy Efficiency Rating : TBC

To arrange an accompanied viewing please pop in or call us on 01986 490590

FOR SALE PROPERTY



For our full list of available properties, or for a FREE INSTANT online valuation visit

starkingsandwatson.co.uk



- No Chain!
- Detached Family Home
- Deceptively Spacious Plot
- Newly Installed Central Heating Boiler
- New Floor Coverings
- Scope to Extend (stp)
- Three Bedrooms
- Garage, Parking & Gardens

IN SUMMARY

NO CHAIN. This FAMILY HOME occupies a WONDERFUL POSITION and a DECEPTIVELY SPACIOUS plot being sold in MOVE-IN CONDITION. A RECENT UPDATE to the property included a NEWLY INSTALLED GAS fired CENTRAL HEATING BOILER, replacing of FLOORING with LUXURY CARPETS and bathroom flooring and full modern neutral RE-DECORATION throughout. The DETACHED ACCOMMODATION is laid out with a hall entrance, SITTING ROOM, separate DINING ROOM, cloakroom and KITCHEN at ground level. Upstairs, THREE BEDROOMS lead from the landing and there is a FAMILY BATHROOM. This leaves only the EN SUITE SHOWER ROOM which adjoins the MAIN BEDROOM. There is a GARAGE and PARKING also included and a gate to the REAR GARDEN.

SETTING THE SCENE

There are climbing roses and space for hanging baskets either side of the front door which has an area of lawn to front and steps for access. Adjacent to the property, a hard standing driveway provides off

road parking and access to the garage with up and over door to front.

THE GRAND TOUR

Once inside, there is a brand new fitted carpet underfoot in the main living space which has recently been laid. Also leading from the hall is a ground floor cloakroom with a two-piece suite and newly laid modern vinyl flooring and the stairs leading to the first floor. The dining room has a window to front and a connecting door to the kitchen which has a range of wall and base level cabinets, plenty of space for appliances and built-in cooking appliances. The gas hob is recessed into the wood effect work surfaces with an electric cooker underneath. To one corner, the newly installed gas boiler, a uPVC double glazed window to rear with a sink under, and a door leading to the patio. The sitting room has French doors to the rear garden and a connecting door back to the hall. Upstairs, the three bedrooms which lead from the landing have matching fitted carpets. Two of the bedrooms have windows facing to rear with a wonderful view of greenery. The main bedroom has an en suite shower room, with WC and hand wash basin, and new modern vinyl flooring recently installed. The remaining bedroom could be a perfect home office, single bedroom or even a walk-in wardrobe. The family bathroom has a three-piece suite with brand new modern tiled effect vinyl flooring underfoot.



To arrange an accompanied viewing please call our
Bungay Office on **01986 490590**



THE GREAT OUTDOORS

To rear, there is an area of patio immediately outside the property which leads to a lawned garden which has mature plantings in all forms. Fruit trees including apple, plum, pear and cherry - there is a wisteria which is climbing up and over the garage which creates a splash of colour when in bloom. The garden offers a sheltered and private garden that is non-overlooked, whilst both the garage and shed benefit from lighting and a power supply.

OUT & ABOUT

The property is situated at the heart of the quaint market town of Bungay, a short walk from the high street, where you find an extensive range of amenities including doctors, schooling, dentist, opticians, shops and restaurants. The City of Norwich to the North is about a 30 min drive away with a mainline train link to London Liverpool Street. The market town of Diss is about 19 miles away and provides further amenities and also benefits from a mainline link to London.

FIND US

Postcode : NR35 1SE

What3Words : ///glassware.searcher.helpful

VIRTUAL TOUR

View our virtual tour for a full 360 degree of the interior of the property.

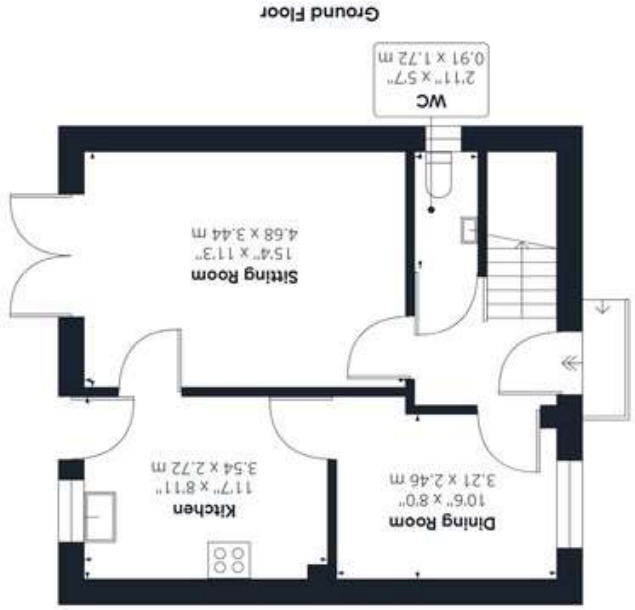
Disclaimer: Whilst every care has been taken to prepare these sales particulars, they are for guidance purposes only. All measurements are approximate are for general guidance purposes only and whilst every care has been taken to ensure their accuracy, they should not be relied upon and potential buyers are advised to recheck the measurements.

Price:



For our full list of available properties, or for a FREE INSTANT online valuation visit

starkingsandwatson.co.uk



Approximate total area⁽¹⁾
866.91 ft²
80.54 m²

(1) Excluding balconies and terraces

GIRAFFE 360

While every attempt has been made to ensure accuracy, all measurements are approximate, not to scale. This floor plan is for illustrative purposes only.