



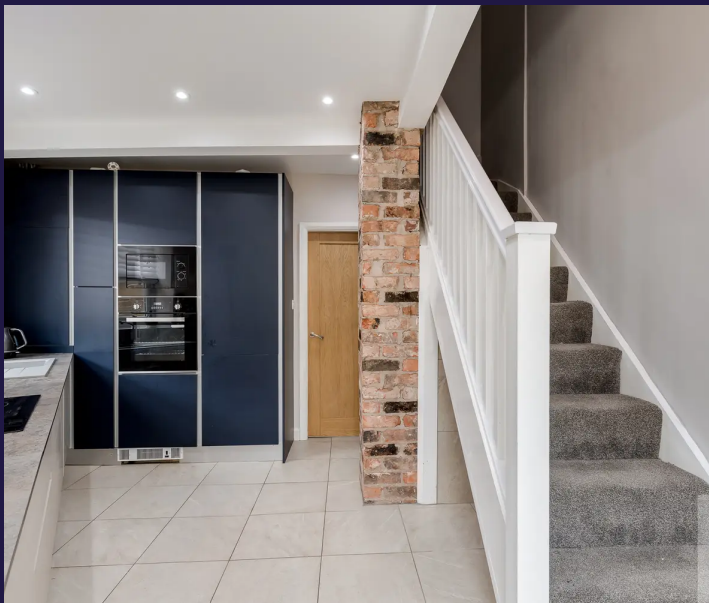
The Green, Ecclestone

PR7 5TP

£155,000



Fully refurbished end terrace property with stylish and elegant bathroom and kitchen, private rear garden and outbuilding. Within easy walking distance of the village centre and close to primary transport routes this lovely property has plenty to offer and is available with no upward chain. Step into the vestibule and from there to the main reception room with plenty of space for both dining and lounge furniture. To the rear the new Crown Imperial fitted kitchen comprises a range of wall and base units with mood lighting and integrated appliances including induction hob with extractor over, electric oven and grill, microwave, fridge, freezer and dishwasher all complimented by ceramic work surfaces. Outside you can relax on the lazy lawn with entertainment space and access to parking and a substantial outbuilding for storage. To the first floor are two double bedrooms, and fabulous bathroom comprising bath, wc, wash hand basin, rainfall mixer shower in cubicle, tiled elevations and ladder heated towel rail. The redevelopment includes a rewire, new heating system, triple glazed ground floor windows to the front with security, security locked front door, insulated external walls and loft space, sound proofed party walls, LED lighting throughout, USB sockets. This is an excellent first time buy, or investment property and secure parking to the side of the property.



Fully refurbished end terrace property with stylish and elegant bathroom and kitchen, private rear garden and outbuilding. Within easy walking distance of the village centre and close to primary transport routes this lovely property has plenty to offer and is available with no upward chain.

Council Tax band: A

Tenure: Freehold

- Fully refurbished end terrace
- Two double bedrooms
- Garden and entertainment space
- Modern kitchen and bathroom
- Off-road parking
- No upward chain



HOME TRUTHS
SALES AND LETTING AGENT

Eccleston Branch

265 The Green, Eccleston, PR7 5TF
01257 451673

Coppull Branch

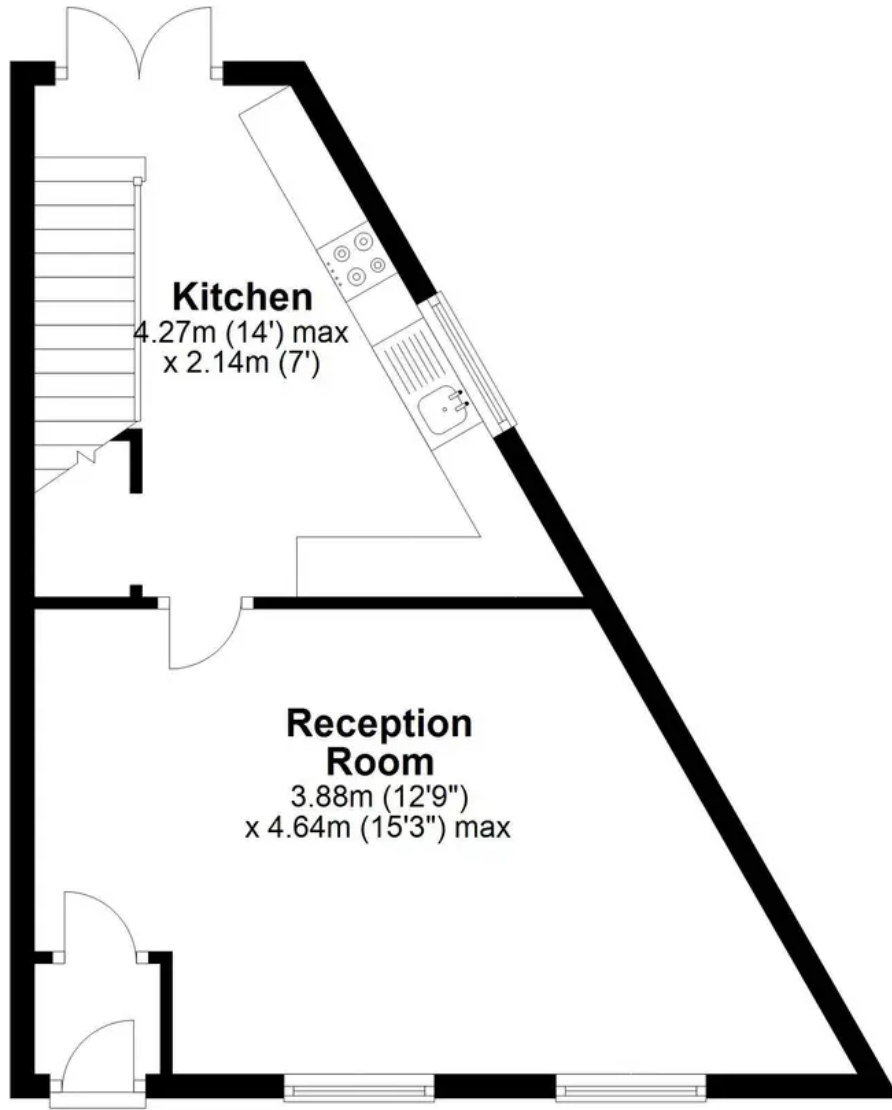
244 Spendmore Lane, Coppull, PR7 5DE
01257 794588

www.hometruthslancs.co.uk
office@hometruthslancs.co.uk



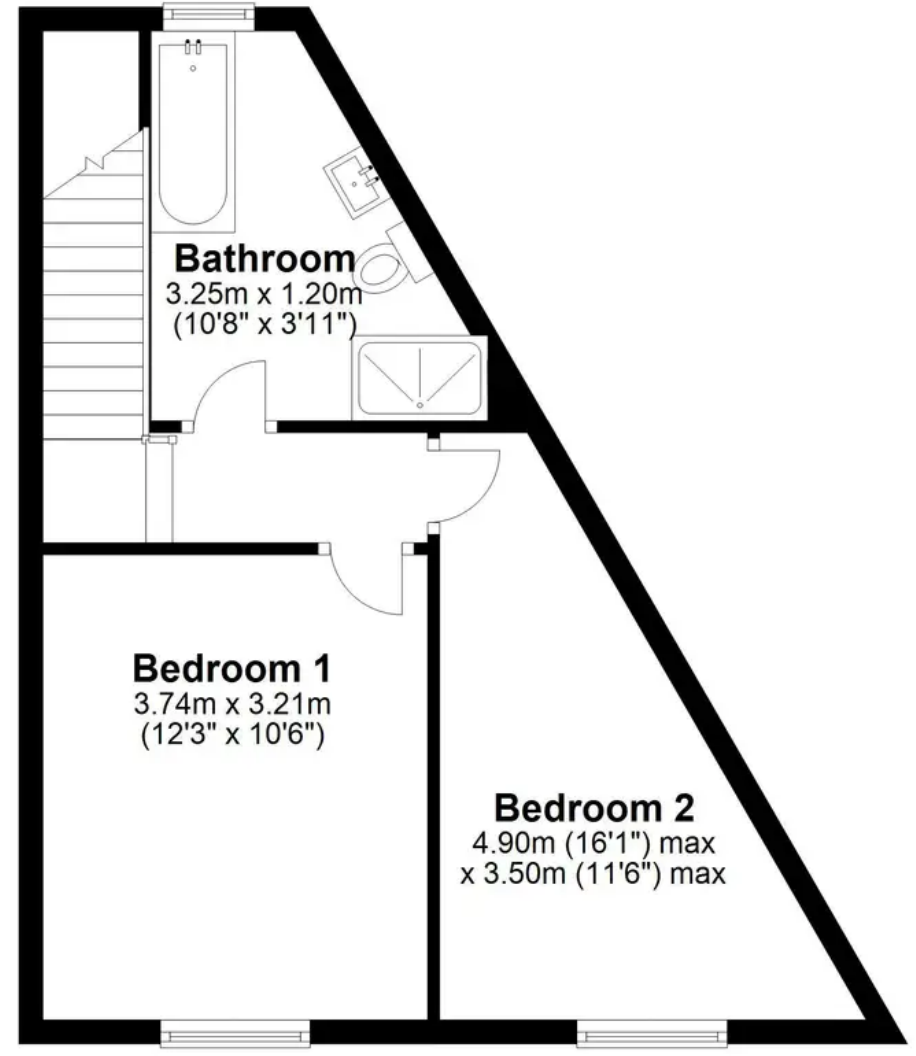
Ground Floor

Approx. 37.1 sq. metres (399.5 sq. feet)



First Floor

Approx. 37.0 sq. metres (398.1 sq. feet)



Total area: approx. 74.1 sq. metres (797.6 sq. feet)

THIS FLOOR PLAN IS FOR ILLUSTRATION ONLY AND IS NOT A SCALE DRAWING

Plan produced using PlanUp.