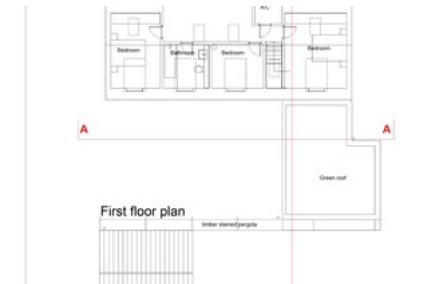
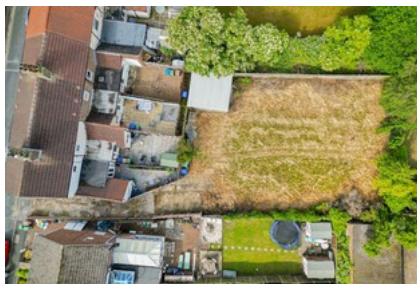




Cherry Tree Terrace, Beverley
INVITING OFFERS BETWEEN £120,000-£140,000



- ✔ Exceptional Development Opportunity
- ✔ Spacious Plot Of Land With Planning Permission For A 1300 Sq.ft. Dwelling
- ✔ Design And Create Your Dream Home
- ✔ In The Heart Of Beverley Just Moments Away From Fleming Gate

Guide Price **£120,000**

Bedroom 0 Bathroom 0 Reception 0