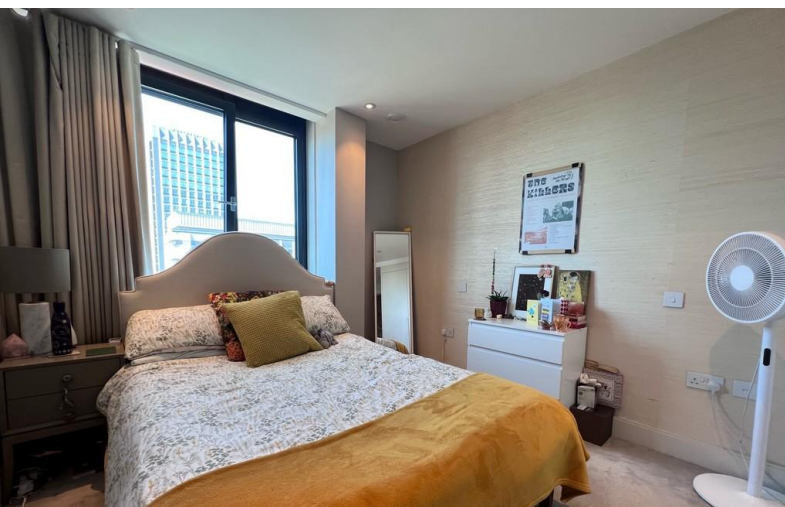


LET AGREED



Wellesley Road, East Croydon

2 Bedrooms, 2 Bathroom, Apartment

£1,625 pcm


MARTIN&CO



Wellesley Road, East Croydon

2 Bedrooms, 2 Bathroom

£1,625 pcm

Don't miss this superb nearly-new two bedroom/2 'bathroom' apartment forming part of a striking modern development, 'The Quarters', just a few minutes stroll from East Croydon Station, Tramlink and the town centre's bars and restaurants. Properties of this size are very rarely available in 'The Quarters' and you should view without delay to avoid disappointment! Call us now!

Date available: Available Now

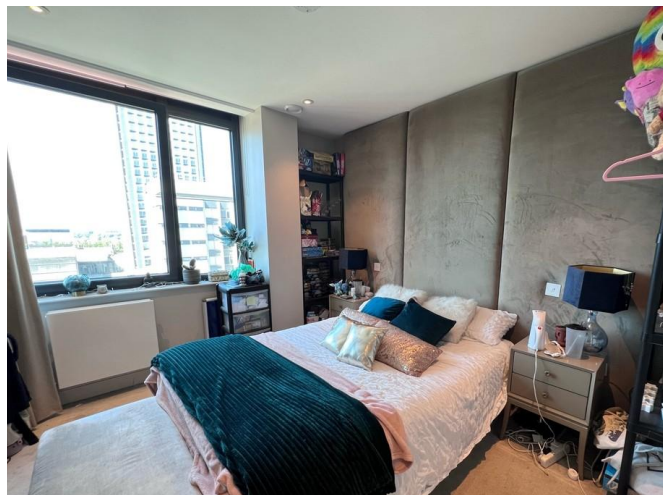
Deposit: £1,875

Furnished

Council Tax band: E

- Luxury 2 Bedroom Apartment
- Furnished
- Two Double Bedrooms
- Large Open Plan Living Room
- Two Bathrooms
- On The 7th Floor
- Concierge





Score	Energy rating	Current	Potential
92+	A		
81-91	B		
69-80	C	78 C	78 C
55-68	D		
39-54	E		
21-38	F		

Martin & Co Croydon

145 Brighton Road • • South Croydon • CR2 6EF
T: 0208 688 8565 • E: croydon@martinco.com

0208 688 8565

<http://www.martinco.com>



Accuracy: References to the Tenure of a Property are based on information supplied by the Seller. The Agent has not had sight of the title documents. A Buyer is advised to obtain verification from their Solicitor. Items shown in photographs including but not limited to carpets, fixtures and fittings are not included unless specifically mentioned within the sales particulars. They may however be available by separate negotiation. Buyers must check the availability of any property and make an appointment to view before embarking on any journey to see a property. No person in the employment of the agent has any authority to make any representation about the property, and accordingly any information given is entirely without responsibility on the part of the agents, sellers(s) or lessors(s). Any property particulars are not an offer or contract, nor for part of one. **Sonic / laser Tape:** Measurements taken using a sonic / laser tape measure may be subject to a small margin of error. **All Measurements:** All Measurements are Approximate. **Services Not tested:** The Agent has not tested any apparatus, equipment, fixtures and fittings or services and so cannot verify that they are in working order or fit for the purpose. A Buyer is advised to obtain verification from their Solicitor or Surveyor.