



LAWRENCE RAND

Whitby Road, Ruislip

£625,000



Whitby Road

Ruislip, Ruislip

This spacious three bedroom semi has been very well maintained by the current owners and is well located being within easy reach of a number of local schools, shops and stations at Eastcote, South Ruislip & Ruislip Manor.

Council Tax band: D

Tenure: Freehold

- Immaculate semi-detached house
- 3 Bedrooms
- 2 Bathrooms
- Large rear garden
- Multiple off street parking
- Close to local schools
- Easy access to Eastcote & South Ruislip Stations







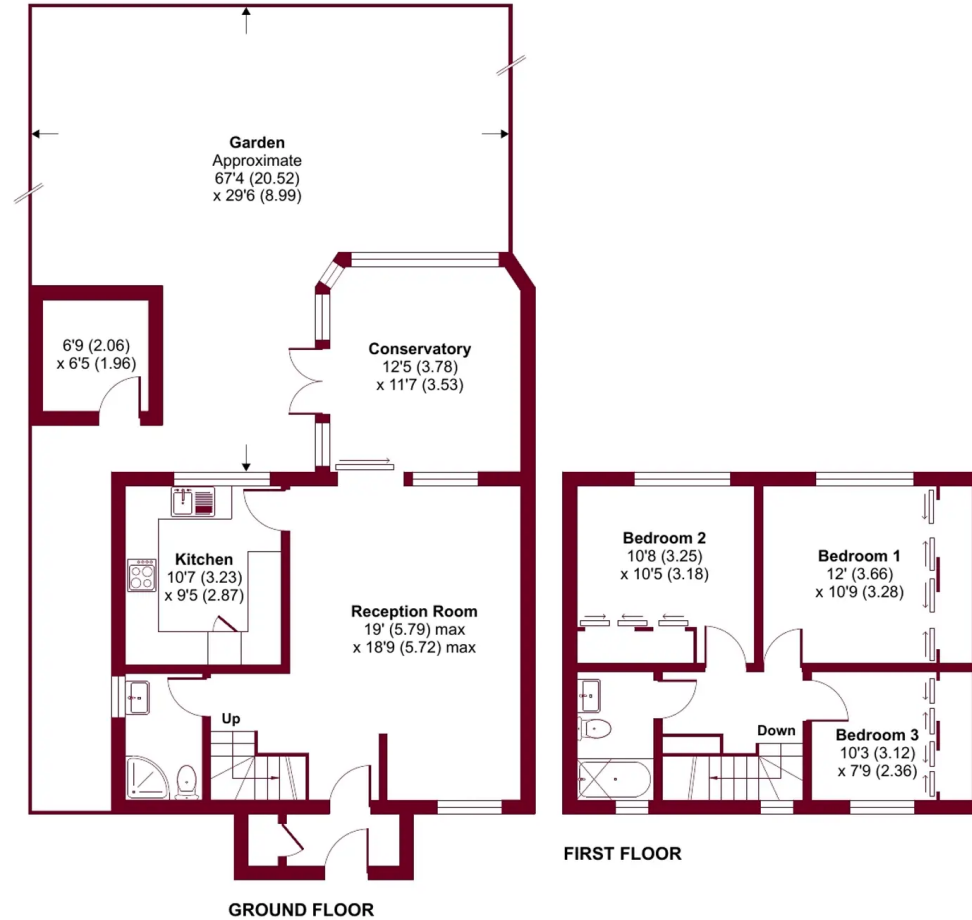
Whitby Road, Ruislip, HA4

Approximate Area = 1097 sq ft / 102 sq m

Outbuilding = 43 sq ft / 4 sq m

Total = 1140 sq ft / 106 sq m

For identification only - Not to scale





Lawrence Rand

Lawrence Rand, 106 Victoria Road - HA4 0AL

01895 632211

Info@lawrence-rand.co.uk

www.lawrence-rand.co.uk/



LAWRENCE RAND