



Crystal Close, Paignton, TQ4 7LF

Price: £425,000 Tenure: Freehold



Crystal Close, Paignton, TQ4 7LF

A lovely family home set within a select cul de sac of similar properties in Goodrington.

- Attractive detached house in select residential cul de sac
- Short distance to beaches and amenities
- Lounge and conservatory reception rooms
- Kitchen/dining room
- Four first floor bedrooms
- Cloakroom, bathroom and en-suite shower room
- Garage and off road parking
- Low maintenance secluded rear garden
- Quiet residential cul de sac location
- EPC - TBC / Council tax band - E



Quiet and tucked away location in the heart of Goodrington. A further modern family home with many appealing features including en-suite shower room to the main bedroom plus three further bedrooms. Generous living space with attractive conservatory opening into the garden.

Well proportioned family home offering lounge with outlook to front and opening into a kitchen/dining room. The kitchen features a range style cooker and a well fitted range of units. From the dining area there are patio doors opening into a lovely conservatory enjoying a sunny aspect with views over the garden. Integral garage with access from both the garden and the kitchen with up and over door to front. There is also a cloakroom on the ground floor. First floor accommodation includes main bedroom with en-suite shower room, three further bedrooms and a family bathroom. Outside there is off road parking and a low maintenance rear garden.



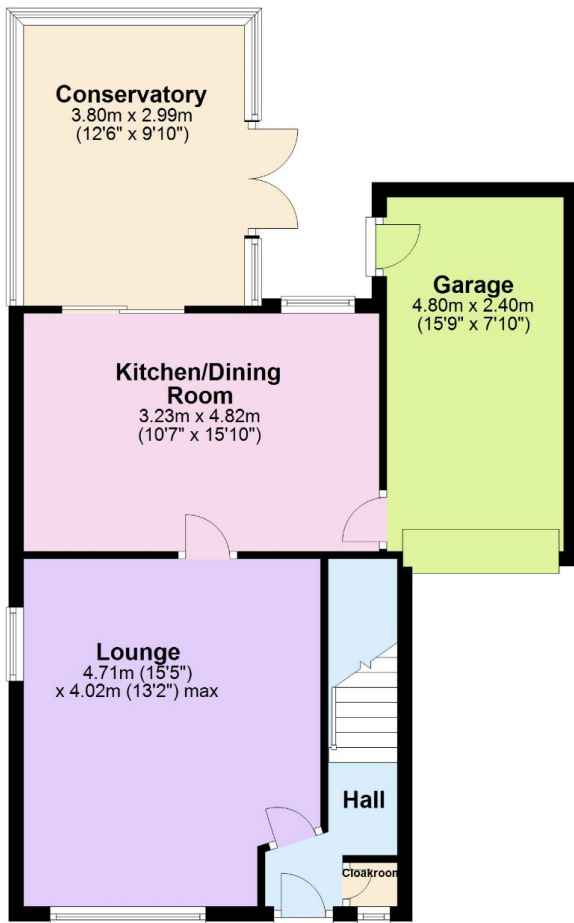
Lovely location in Goodrington and convenient for a range of local amenities including shops, cafes and regular bus service. Goodrington beaches includes South Sands and North Sands and popular local Saltern Cove with adjoining easy access to the south west coast path. There are also pleasant walks nearby through Clennon Lakes nature trails. Paignton town centre offers a range of shopping plus cafes, bars and restaurants. There is a lovely sandy beach, pleasure green, pier and picturesque harbour.



What3Words uPn:
<https://what3words.com/slurping.decorate.corner>

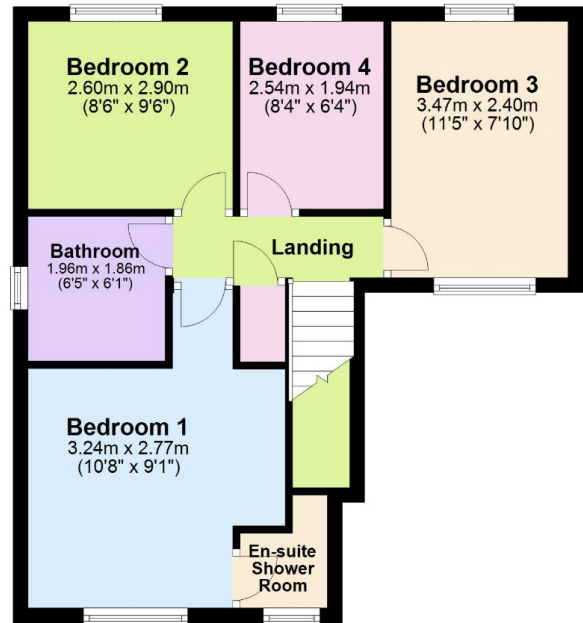
Ground Floor

Approx. 63.4 sq. metres (682.0 sq. feet)



First Floor

Approx. 44.7 sq. metres (480.8 sq. feet)



Total area: approx. 108.0 sq. metres (1162.8 sq. feet)

Have a property to sell or let?

If you are considering selling or letting your home, get in contact with us today on 01803 214214 to speak with one of our expert team who will be able to provide you with a free valuation of your home.



We refer potential purchasers to Wollens & Busbys Law for conveyancing, Greenlight Mortgages for mortgages, McCluskey Surveyors for surveying, Team Removals for removals & Saltwater Escapes for holiday letting management. It is your decision if you choose to deal with any of these companies, however should you choose to use them we would receive a referral fee from them for recommending you to them as follows: Wollens & Busbys Law £150, Greenlight Mortgages £300, McCluskey Surveyors £50, Team Removals £50 & Saltwater Escapes £100. We have carefully selected these associates for the quality of their work and customer service levels, the referral fees they give us is part of their marketing budget and does not affect the amount you pay.

Consumer Protection Regulations: We have not tested any apparatus, equipment, fixtures and fittings or services and so cannot verify that they are in working order or fit for the purpose. References to the Tenure of a Property are based on information supplied by the seller. We have not had sight of the Title Documents. A buyer is advised to obtain verification from their solicitor or surveyor. Floorplans shown are for guidance only and should not be relied upon. Items shown in photographs are NOT included unless specifically mentioned within these details. They may however be able by separate negotiation. You are advised to check the availability of this property before travelling any distance to view. Particulars are produced in good faith to the best of our knowledge and are set out as a general guide only.

