



St. Leonards Road, Blackpool

Blackpool

£150,000

# 89 St. Leonards Road

Blackpool, Blackpool

Recently renovated three bedroom semi detached property situated in a popular residential location within close proximity of Stanley Park, many amenities, schools, shops and transport links. The accommodation briefly comprises of hallway, lounge, stunning open-plan kitchen diner. To the first floor there are three bedrooms along with a three piece bathroom, suite. Externally there is are front and rear gardens. Viewing is highly recommended to appreciate the accommodation on offer. \*NO ONWARD CHAIN\*

Council Tax band: B

Tenure: Freehold

- Open-Plan Kitchen Diner
- Popular Residential Location
- No Onward Chain
- Close To Stanley Park
- Close To Many Amenities
- Recently Renovated







### Hallway

Entrance Hallway, under stairs storage, radiator.

### Lounge

12' 9" x 10' 6" (3.88m x 3.19m)

UPVC double glazed walk in bay window, gas fire with fireplace, featuring exposed brick, radiator.

### Kitchen/Diner

14' 5" x 17' 7" (4.40m x 5.35m)

Stunning Open-Plan Kitchen Diner fitted with a matching range of gloss grey base and wall units, white granite worktops, integrated oven and four ring induction hob, plumbing for washing machine. UPVC double glazed windows to the rear elevation. Door providing access to rear garden.

### Landing

Landing leading to bedrooms and bathroom, multicoloured overhead spotlights.

### Bedroom 1

14' 10" x 9' 7" (4.51m x 2.92m)

UPVC double glazed bay window to the rear elevation, fitted wardrobes, radiator.

### Bedroom 2

13' 3" x 9' 8" (4.04m x 2.95m)

UPVC Double glazed walk in bay window to the front elevation, radiator

### Bedroom 3

6' 11" x 6' 2" (2.12m x 1.87m)

UPVC double glazed window to the front elevation, radiator.

### Bathroom

5' 8" x 6' 2" (1.73m x 1.88m)

Three piece bathroom suite, granite tiled flooring. Comprising white panelled bath with overhead shower, pedestal hand wash basin, low flush WC, UPVC double glazed window. Heated towel rail.





### Hallway

Entrance Hallway, under stairs storage, radiator.

### Lounge

12' 9" x 10' 6" (3.88m x 3.19m)

UPVC double glazed walk in bay window, gas fire with fireplace, featuring exposed brick, radiator.

### Kitchen/Diner

14' 5" x 17' 7" (4.40m x 5.35m)

Stunning Open-Plan Kitchen Diner fitted with a matching range of gloss grey base and wall units, white granite worktops, integrated oven and four ring induction hob, plumbing for washing machine. UPVC double glazed windows to the rear elevation. Door providing access to rear garden.

### Landing

Landing leading to bedrooms and bathroom, multicoloured overhead spotlights.

### Bedroom 1

14' 10" x 9' 7" (4.51m x 2.92m)

UPVC double glazed bay window to the rear elevation, fitted wardrobes, radiator.

### Bedroom 2

13' 3" x 9' 8" (4.04m x 2.95m)

UPVC Double glazed walk in bay window to the front elevation, radiator

### Bedroom 3

6' 11" x 6' 2" (2.12m x 1.87m)

UPVC double glazed window to the front elevation, radiator.

### Bathroom

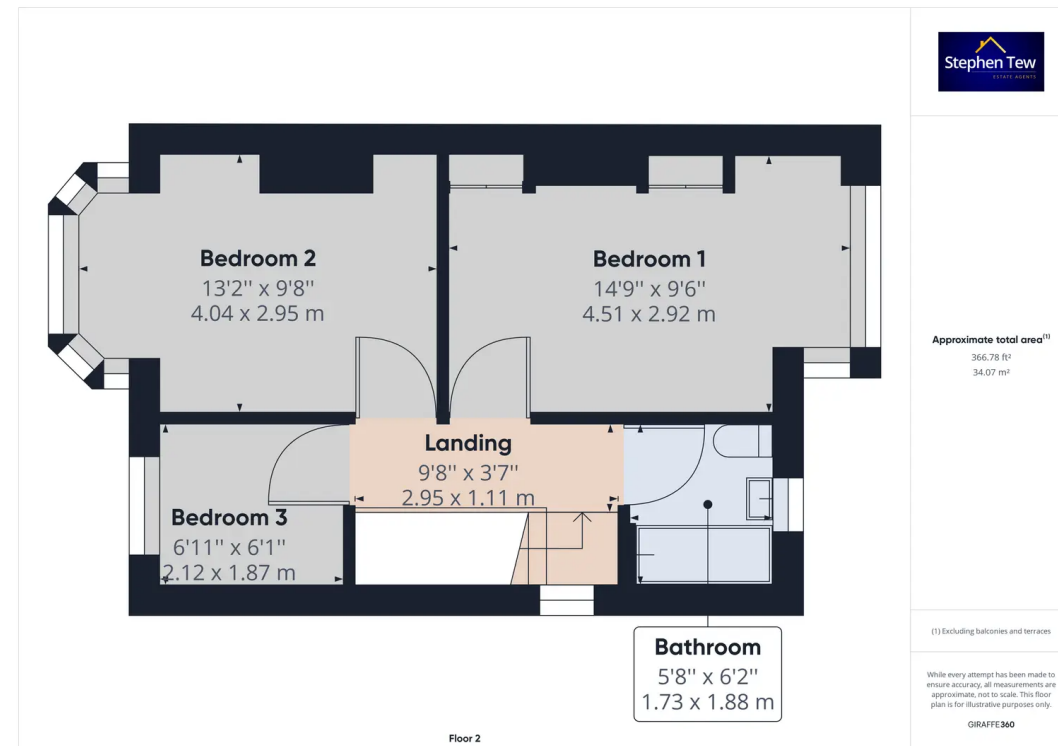
5' 8" x 6' 2" (1.73m x 1.88m)

Three piece bathroom suite, granite tiled flooring. Comprising white panelled bath with overhead shower, pedestal hand wash basin, low flush WC, UPVC double glazed window. Heated towel rail.













## Stephen Tew Estate Agents

Stephen Tew Estate Agents, 132 Highfield Road - FY4 2HH

01253 401111

[info@stephentew.co.uk](mailto:info@stephentew.co.uk)

[www.stephentew.co.uk](http://www.stephentew.co.uk)

