



KAYBRIDGE  
RESIDENTIAL



Maultway Court

Epsom

Guide Price £330,000



## Maultway Court

- Split-level
- Gated development
- Two double bedrooms
- Immaculately presented
- Sought-after location
- Allocated parking
- Visitor parking
- Long lease

\*\*\*Guide Price £330,000 - £350,000\*\*\*

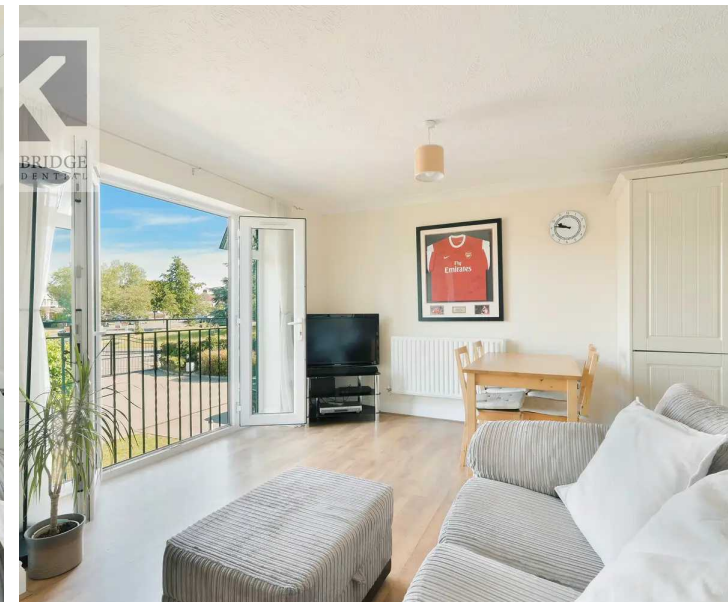
Kaybridge Residential are proud to present to the market this superb split-level apartment offered to the market in exceptional condition. This beautiful home is nestled away in a private gated development within walking distance to local amenities and transport links.

Upon entering you are greeted with a welcoming hallway which leads to the bright and spacious living/dining area with Juliet balcony and modern kitchen.

To the first floor there are two great sized bedrooms, an immaculate three piece bathroom and storage cupboard.

Further benefits include a long lease, allocated parking and visitor parking.

To fully appreciate this stunning home, a viewing is highly recommended.







**Maultway Court, 67-69 Ruxley Lane,  
Epsom**

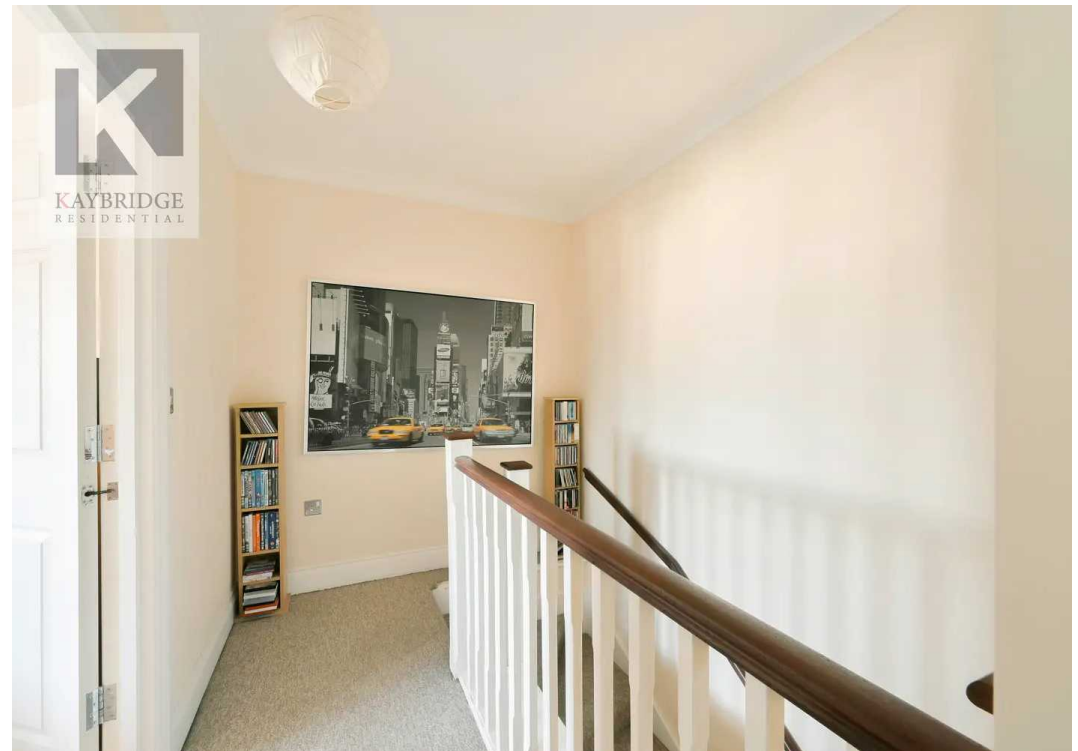
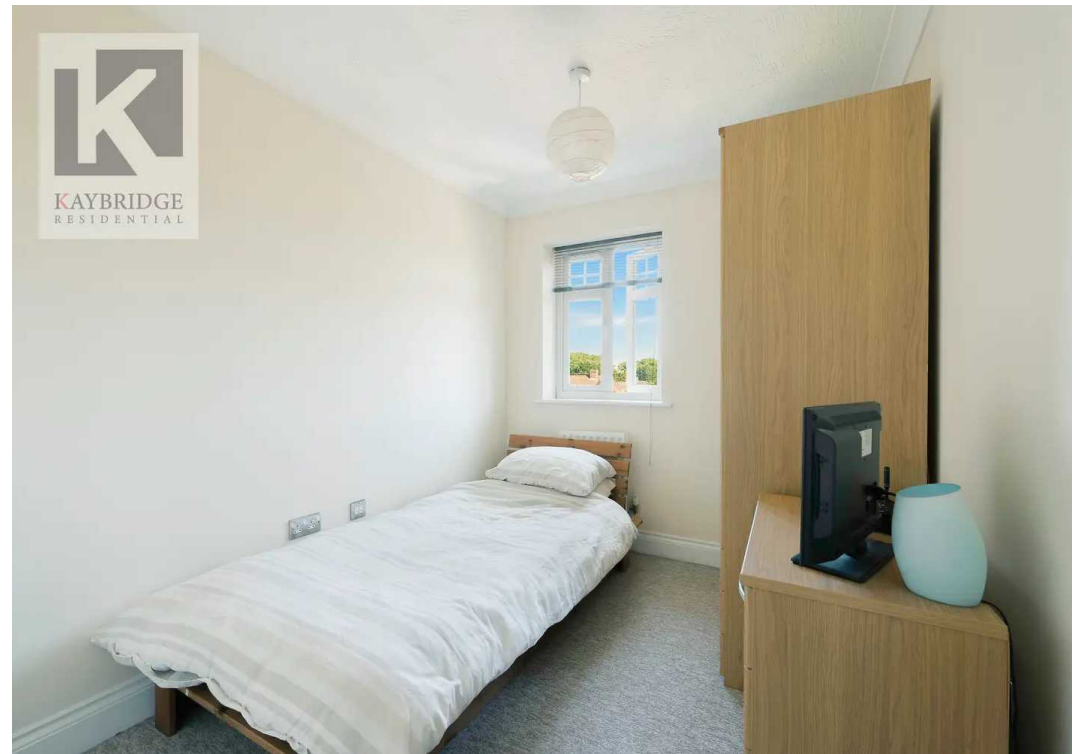
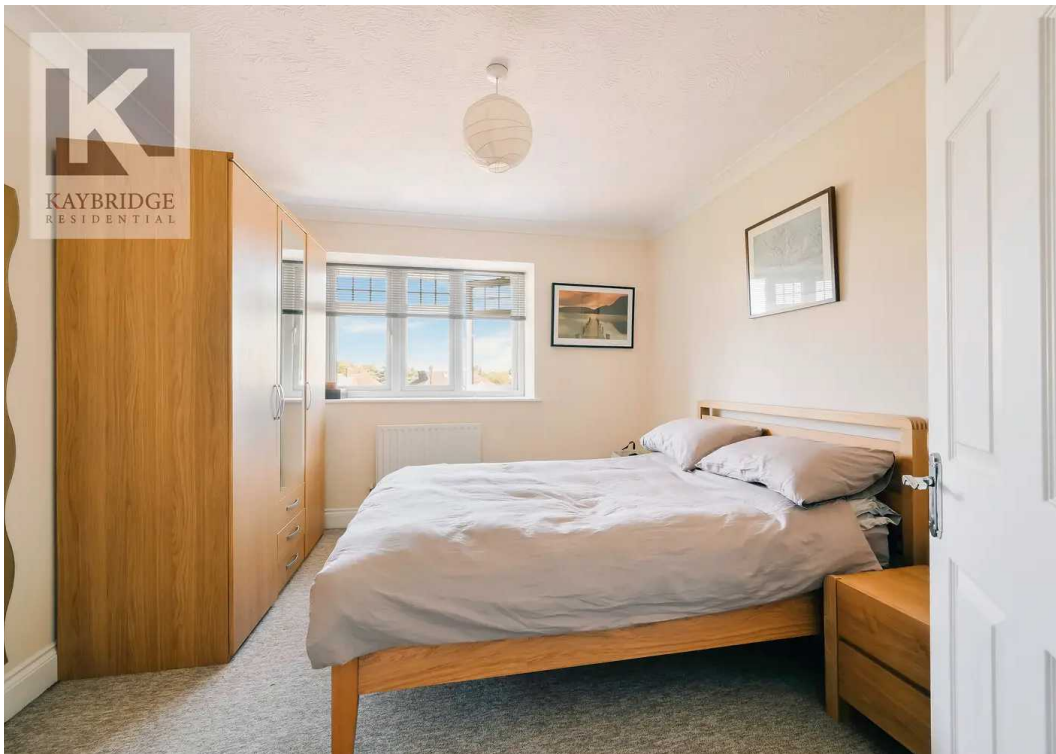
Kaybridge Residential are proud to present to the market this superb split-level apartment offered to the market in exceptional condition. This beautiful home is nestled away in a private gated development within walking distance to local amenities and transport links.

Council Tax band: D

Tenure: Leasehold

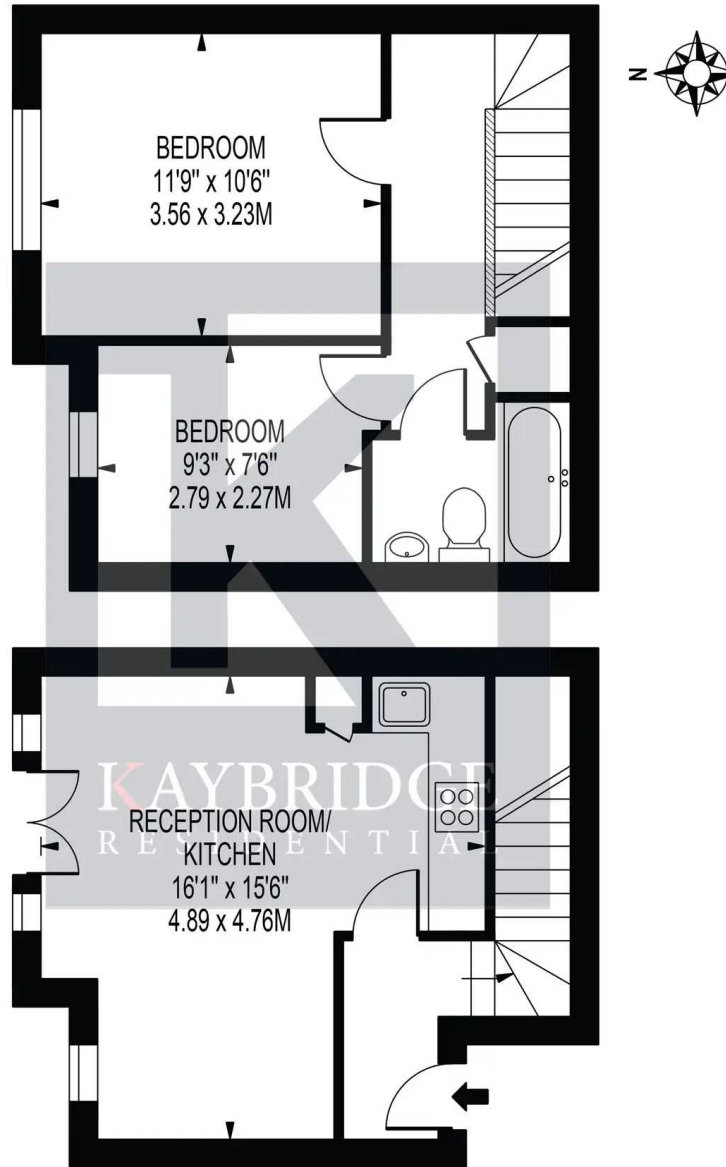






# MAULTWAY CLOSE

APPROXIMATE GROSS INTERNAL FLOOR AREA: 587 SQ FT - 54.52 SQ M



FOR ILLUSTRATION PURPOSES ONLY

THIS FLOOR PLAN SHOULD BE USED AS A GENERAL OUTLINE FOR GUIDANCE ONLY AND DOES NOT CONSTITUTE IN WHOLE OR IN PART AN OFFER OR CONTRACT.  
ANY INTENDING PURCHASER OR LESSEE SHOULD SATISFY THEMSELVES BY INSPECTION, SEARCHES, ENQUIRIES AND FULL SURVEY AS TO THE CORRECTNESS OF EACH STATEMENT.  
ANY AREAS, MEASUREMENTS OR DISTANCES QUOTED ARE APPROXIMATE AND SHOULD NOT BE USED TO VALUE A PROPERTY OR BE THE BASIS OF ANY SALE OR LET.





KAYBRIDGE  
RESIDENTIAL



KAYBRIDGE  
RESIDENTIAL



## Kaybridge Residential Epsom

Kaybridge Residential Estate Agents, 23 Stoneleigh Broadway - KT17 2JE

02080040474 • [info@kbridge.co.uk](mailto:info@kbridge.co.uk) • [www.kaybridgeresidential.co.uk/](http://www.kaybridgeresidential.co.uk/)