



The Royal Dart Townhouse

The Square
Kingswear



THE COASTAL HOUSE
ESTATE AGENTS



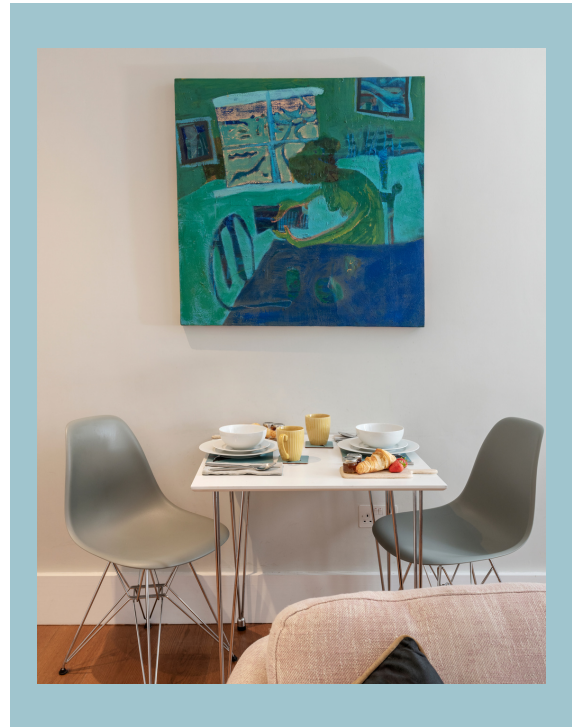
This stunning 2-bed townhouse is part of a prominent local landmark and sits proudly looking out over the surrounding village. Renovated in 2017 to a high standard throughout the property has a modern and contemporary feel yet exudes its wealth of history through the fabric of the building.



With its origins as a hotel, you are embraced as soon as you walk in through your own front door with the feel of luxury with the oak staircase leading you up from the Entrance Hall to the first-floor open-plan living accommodation.

With ample space for cooking with built-in SMEG appliances and room for dining and relaxing on the sofa this really is a welcoming and inviting space.





Relax & unwind here by the
River Dart



The top two floors comprise Bedroom Suites - each with its own Ensuite. The Principal Bedroom on the top floor has beautifully crafted oak-lined wardrobes with integral lighting plus a superb fitted Ensuite Bathroom with underfloor heating and sleek contemporary fixtures and fittings to truly give you that spa hotel feel.



*A beautiful & tranquil
bedroom to fall asleep in*



On the first floor is a versatile room - it can be a beautiful Guest Suite with its own Ensuite Shower Room with underfloor heating. Or it could serve as your serene space in which to work or read when you are not on the river or visiting the many stunning towns, villages and beaches close by.

There is also allocated parking for one car in the adjoining car park and a large storage room.





Period features with contemporary styling

Snapshot

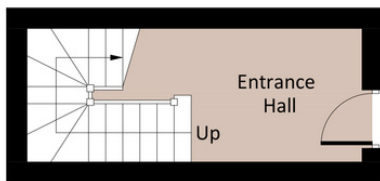


- 2 Bed Townhouse
- 2 Bathrooms
- Open Plan Lounge/Diner With Modern Fitted Kitchen
- Beautifully Renovated & Refurbished
- Allocated Parking
- Central Village Location
- Conservation Area

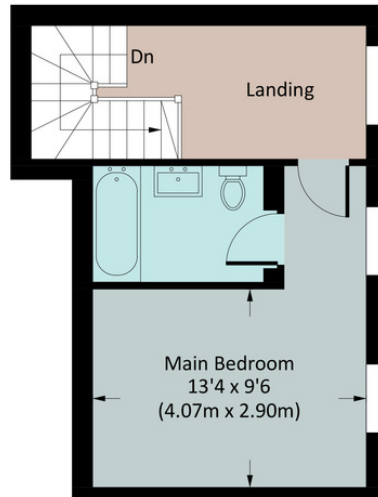
THE ROYAL DART TOWNHOUSE

Approx. gross internal area
1033 Sq Ft. / 96.0 Sq M.

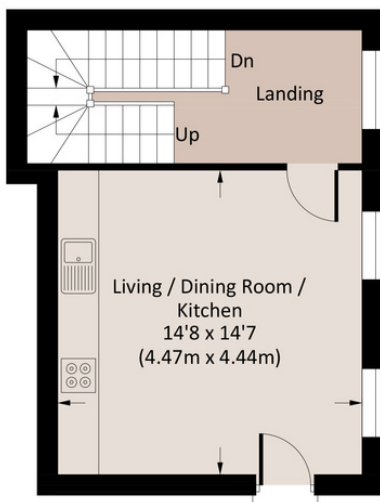
Floorplan



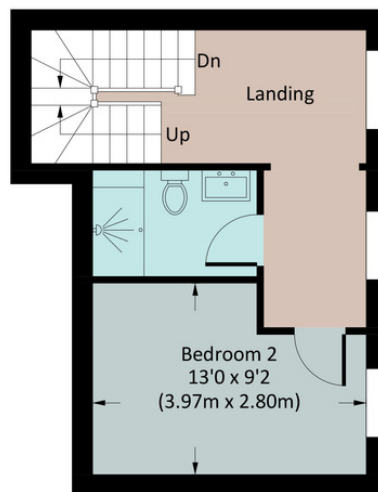
LOWER GROUND FLOOR



SECOND FLOOR



GROUND FLOOR



FIRST FLOOR

The Little Details...

Postcode: TQ6 0AA

Tenure: Leasehold with a share of freehold.
Vendors advise length of lease is 999 years from 2019 with service charges payable as requested.

Listing: Grade II listed

EPC rating: C

Council tax: C

Local Authority: South Hams District Council

Mains: Water, electricity & drainage

Heating: Electric

Parking: 1 allocated parking space

Transport: Totnes (16 miles) or Newton Abbot (16 miles) for mainline trains to London
A38 Devon Expressway - 20 miles

 drummers.calling.skewing

Viewing strictly by appointment. Please

contact us:

team@thecoastalhouse.co.uk

01803 752 321

The smallprint

Illustration for identification purposes only, measurements are approximate, not to scale. floorplansUsketch.com © (ID983126)

The Coastal House use all reasonable endeavours to supply accurate property information in line with the Consumer Protection from Unfair Trading Regulations 2008. These property details do not constitute any part of the offer or contract and all measurements are approximate. The matters in these particulars should be independently verified by prospective buyers. It should not be assumed that this property has all the necessary planning, building regulation or other consents. Any services, appliances and heating system(s) listed have not been checked or tested. Purchasers should make their own enquiries to the relevant authorities regarding the connection of any service. No person in the employment of The Coastal House has any authority to make or give any representations or warranty whatever in relation to this property or these particulars or enter into any contract relating to this property on behalf of the vendor. Floor plan not to scale and for illustrative purposes only.

Coastal House Ltd Registered Office: 14 Mayors Avenue, Dartmouth, Devon, TQ6 9NG Registered in England & Wales: No 9447216



THE COASTAL HOUSE
ESTATE AGENTS