



## WELL PRESENTED TWO BEDROOM SEMI DETACHED BUNGALOW

---

Sherborne Way, Croxley Green, Hertfordshire, WD3 3PE

**ROBSONS**

## WELL PRESENTED TWO BEDROOM SEMI DETACHED BUNGALOW

Sherborne Way, Croxley Green, Hertfordshire, WD3 3PE

- RECEPTION ROOM
- KITCHEN
- CONSERVATORY
- TWO BEDROOMS
- FAMILY BATHROOM
- DRIVEWAY
- GARDEN
- NO ONWARD CHAIN

This well presented two bedroom bungalow has the benefit of no onward chain and the potential to extend (STPP).

There is a good sized hallway leading to a spacious, light filled reception room with feature fire place and a door into the conservatory which overlooks the garden. The modern kitchen has ample wall and base units, room for a dining table and chairs and a door leading to garden.





There is a good sized principal bedroom with a large bay window, a second double bedroom, a fully tiled bathroom with P shaped bath and separate WC.

The property has a driveway to the front providing off-street parking. The rear garden is laid to lawn with a patio area, two sheds and is surrounded by shrubs and trees.

Picturesque Croxley Green provides the perfect backdrop as it offers village charm in the rural suburbs of Hertfordshire. The property is within easy reach of Croxley Green and Rickmansworth town centres with its wide range of boutique shops, coffee houses, restaurants and the major supermarkets. The Metropolitan and Chiltern line train services connects you to London Baker Street, Marylebone Station and beyond. The M25 motorway is available at both junctions 17 and 18 connecting you to the national motorway network. Major London airports are also within reach. The area is well served for good quality private and state schools for all ages.

Tenure: Freehold

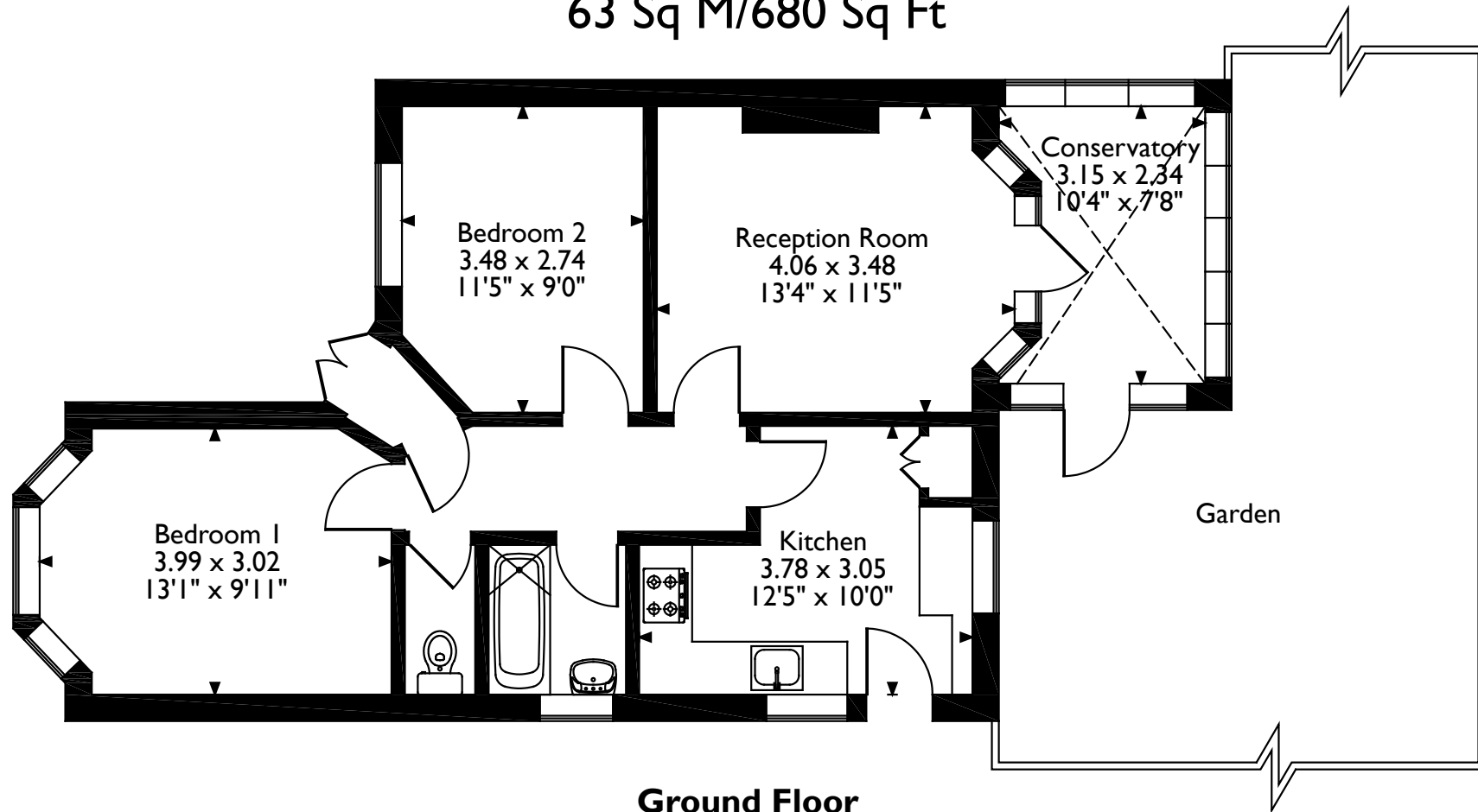
Local Authority: Three Rivers District Council

Council Tax: Band D

Energy Efficiency Rating: Band C



Sherborne Way, Croxley Green, Rickmansworth, Hertfordshire  
Approximate Gross Internal Area  
63 Sq M/680 Sq Ft



Please note that the location of doors, windows and other items are approximate and this floorplan is to be used for illustrative purposes only. Unauthorized reproduction is prohibited.

**ROBSONS**

130 High St, Rickmansworth WD3 1AB  
Tel: 01923 777762 rickmansworth@robsonswb.com

[www.robsonswb.com](http://www.robsonswb.com)

[www.the-londonoffice.co.uk](http://www.the-londonoffice.co.uk)  
40 ST JAMES'S PLACE SW1