

**ON HOLD**



## **Baskerfield House, Angel Way**

**2 Bedrooms, 1 Bathroom, Flat**

**£70,000**



- Retirement flat for over 55s
- 75% Shared Ownership
- Open plan living
- Lounge area
- Kitchen area
- Wet room
- Double glazed

HALL 10' 2" x 8' 7" (3.12m x 2.64m) Carpet Built in storage cupboard.

WET ROOM 9' 6" x 7' 6" (2.90m x 2.31m) Low level WC hand wash basin and electric shower

BEDROOM 1 15' 1" x 9' 6" (4.60m x 2.90m) Upvc double glazed window to front elevation carpet smoke alarm. Access into wet room

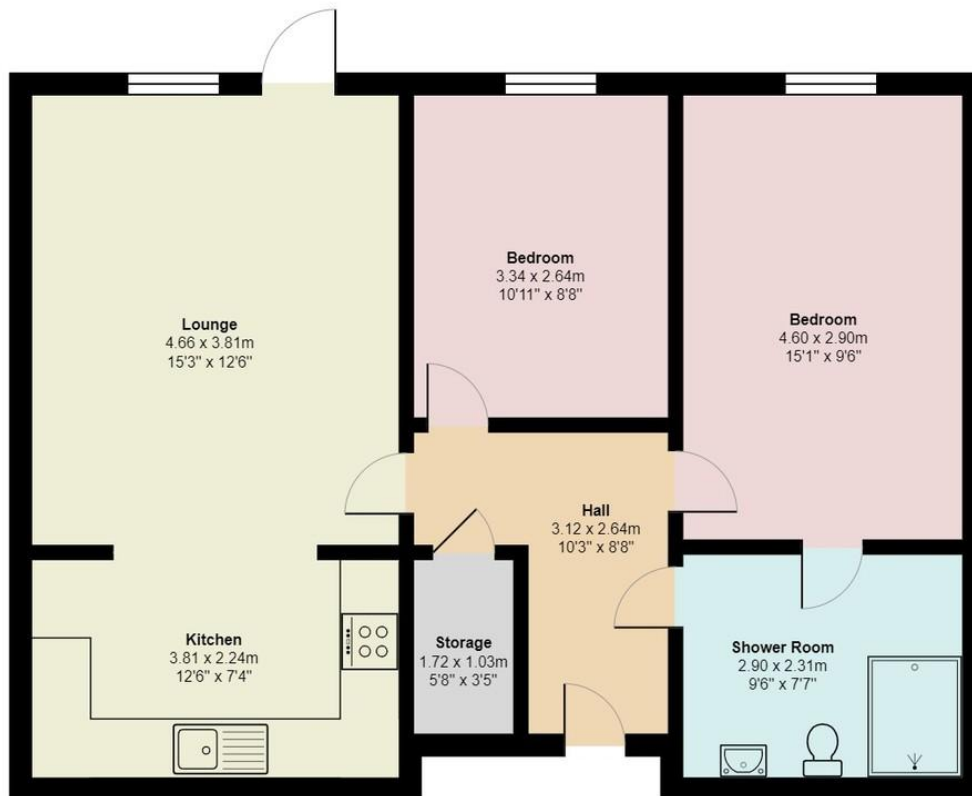
BEDROOM 2 10' 11" x 8' 7" (3.34m x 2.64m) Upvc double glazed window to front elevation carpet smoke alarm

LOUNGE 15' 3" x 12' 5" (4.66m x 3.81m) Upvc double glazed window and door to front elevation, carpet, television aerial point smoke alarm

KITCHEN 12' 5" x 7' 4" (3.81m x 2.24m) Range of wall and base units with work tops over with stainless steel sink, integrated electric hob and oven stainless steel extractor hood space and plumbing for washing machine, space for fridge freezer, tile floor, inset spot lights and smoke alarm.







**Ground Floor**

All measurements are approximate and for display purposes only

## Martin & Co Stoke on Trent

12 Albion Street • Stoke-On-Trent • ST1 1QH  
T: 01782 262880 • E: stokeontrent@martinco.com

# 01782 262880

<http://www.martinco.com>



**Accuracy:** References to the Tenure of a Property are based on information supplied by the Seller. The Agent has not had sight of the title documents. A Buyer is advised to obtain verification from their Solicitor. Items shown in photographs including but not limited to carpets, fixtures and fittings are not included unless specifically mentioned within the sales particulars. They may however be available by separate negotiation. Buyers must check the availability of any property and make an appointment to view before embarking on any journey to see a property. No person in the employment of the agent has any authority to make any representation about the property, and accordingly any information given is entirely without responsibility on the part of the agents, sellers(s) or lessors(s). Any property particulars are not an offer or contract, nor for part of one. **Sonic / laser Tape:** Measurements taken using a sonic / laser tape measure may be subject to a small margin of error. **All Measurements:** All Measurements are Approximate. **Services Not tested:** The Agent has not tested any apparatus, equipment, fixtures and fittings or services and so cannot verify that they are in working order or fit for the purpose. A Buyer is advised to obtain verification from their Solicitor or Surveyor.