



**Ninesprings Way  
Hitchin**

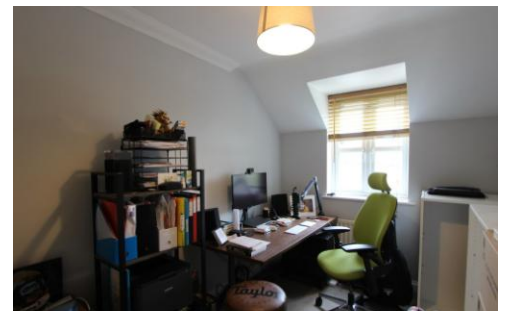
**£1,975 pcm** \*Fees apply



- Master Bedroom with En-suite
- Fitted Kitchen With Appliances
- Spacious Garden with Patio Area
- Garage Included
- Fitted Wardrobes in Bedrooms
- Council Tax - D
- EPC - C
- Available early August!







A stunning 3 bedroom semi-detached house located in a popular residential area. The property consists of three good sized bedrooms, all with fitted wardrobes and one with an en suite, a family bathroom, a separate downstairs W/C, reception room, modern kitchen with appliances, a large living room, a very spacious garden with a patio, decking area and back gate access leading to a garage. Small pets considered. Available early August!

**Viewings:** strictly by appointment with dj Lettings, Hitchin office \*For details of our fees please visit [www.djlettings.co.uk](http://www.djlettings.co.uk)



30 Sun Street, Hitchin  
Hertfordshire. SG5 1AH

t: 01462 455434  
info@djlettings.co.uk  
[www.djlettings.co.uk](http://www.djlettings.co.uk)



Free Property Appraisal • Full Management Service • Tenant Find Service • Tenant Reference Checks  
Rent & Legal Protection • Safety Regulation Advice • Tenancy Deposit Registration  
Client Money Protection • Buy to Let Advice • Estate Management Services